

# Version Control Systems

Jan Faigl

Department of Computer Science

Faculty of Electrical Engineering

Czech Technical University in Prague

Lecture 14

**B0B36PRP – Procedurální programování**

# Overview of the Lecture

- Part 1 – Version Control Systems

Introduction and Terminology

Version Control Systems

SVN - Subversion

Git

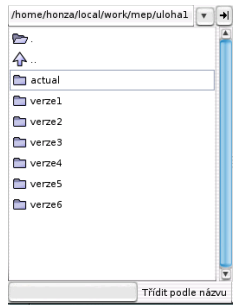
Versioning

# Part I

## Part 1 – Version Control Systems (VCSs)

# What is Version Control?

- Working on a project or an assignment, we can tend to “backup” our early achievements mostly “just for sure”
  - `hw01`
  - `hw01.backup`
  - `hw01.old`
  - `hw01.old2`
  - `hw01.old3`



- We may try a new approach, e.g., for optional assignment, but we would like to preserve the previous (working) approach
- We may also want to backup the files to avoid file/work lost in a case of hard/solid drive failure *We need to save it to a reliable medium*
- Finally, we need a way how to distribute and communicate our changes to other members of the team

# Version Control System

- Version Control System (VCS) is a tool or set of tools that provides **management of changes to files over time**
  - Uniquely identified changes (what)
  - Time stamps of the changes (when)
  - Author of the changes (who)
- VCS can be
  - Manual (by hand) e.g., “save as”
    - Creating multiple copies of files and changes documented in an annotation
    - Backups of the file systems (e.g., snapshots)
    - Files shared between team members
  - Automated version control
    - System or application manages changes
    - Version tracking is managed internally by the system or application
    - It may provide further support for collaboration (team development)

# Benefits of Version Control System (VCS)

- VCS provides numerous benefits for both working environment (individual and team)
- Individual benefits
  - Backups with tracking changes
  - Tagging – marking the particular version in time
  - Branching – multiple versions
  - Tracking changes
  - Revert (undo) changes
- Team benefits
  - Working on the same code sources in a team of several developers
  - Merging concurrent changes
  - Support for conflicts resolution when the same file (the same part of the file) has been simultaneously changed by several developers
  - Determine the author and time of the changes

# History Overview

- 1972 – Source Code Control System (SCCS) *UNIX*
  - Store changes using deltas
  - Keeps multiple versions of a complete directory
  - Keeps original documents and changes from one version to the next
- 1982 – Revision Control System (RCS) *UNIX*
  - Keeps the current version and applies changes to go back to older versions
  - Single file at a time
- 1986 – Concurrent Versions Systems (CVS)
  - Start as scripts on top of the RCS
  - Handle multiple files at a time
  - Client-Server architecture

# Revision Control System (RCS) – Commands

- Create a directory for storing `rcs` files, e.g., `/etc`

- `co -l file` – check out a file and lock it

*Locking by means the file can be checked back in*

- `ci file` – check in a revision (put the file under rcs control)

- `rcs -l file` – lock a file already checked out

- `rcsdiff files` – report on differences between files

- `merge files` – merge two files into an original file

*The results has to be checked, it is not a magic!*



## Revision Control System (RCS) – Example

```
1  $ mkdir work
2  $ cd work
3  $ vim main.sh
4  $ mkdir RCS
5  $ ci -u main.sh
6  RCS/main.sh,v <-- main.sh
7  enter description, terminated with single '.' or end of file:
8  NOTE: This is NOT the log message!
9  >> My main script
10 >> ^D
11 initial revision: 1.1
12 done
13 $ ls RCS
14 main.sh,v
15 $ echo "echo 'My script'" >> main.sh
16
17 $ rcsdiff main.sh
18 =====
19 RCS file: RCS/main.sh,v
20 retrieving revision 1.1
21 diff -r1.1 main.sh
22 1a2
23 > My script
24
25 $ci -u main.sh
26 RCS/main.sh,v <-- main.sh
27 new revision: 1.2; previous revision: 1.1
28 enter log message, terminated with single '.' or end of file:
29 >> Add the debug message.
30 >> .
31 done
```

## Terminology – VCS Vocabulary

- Repository – the database storing the files and deltas
- Working (Local) copy of the versioned files
  - An user works with a copy of the versioned files to modify them

We can further distinguish local and working copy of the repository (versioned files) for particular VCS. E.g., subversion in addition to working copy also keeps local copy of the files in the `.svn` directory with the version of the files the developer is currently working on. Git keeps a local copy of the repository in the `.git` directory

- **Trunk** – The primary location for the particular project files in the repository
- **Branch** – A secondary code location (for a variant of the project)
- **Revision** – A version of the a file (or repository)
- **Commit** – Storing a bunch of changes to the repository
- **Revert** – Roll back a commit from the repository
- **Merge** – Pulling changes from one branch into another
- **Conflict** – When a file cannot be merged cleanly (automagically)

# Repository and Version Control

- Version Control System (VCS) is a set of tools (commands) for interaction with the repository and location files (copies of the versioned files)

*Tool is a command or icon or an item in the menu.*

- Local command or in the case of the repository also a server service

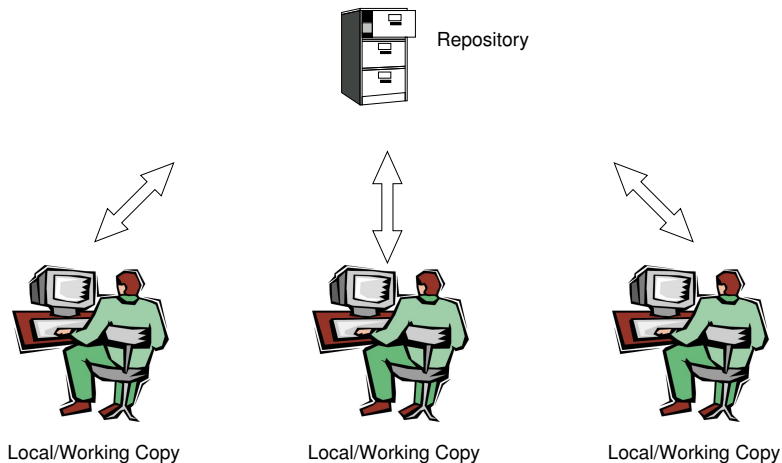
- **Repository**

- All changes are stored in the repository

*Usually as deltas, which store differences, and thus save file size*

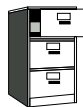
- Repository can be remote or local

# Versioning Files



## Getting Local/Working Copy – checkout

- Create a local copy of the versioned files from the repository
- Directory tree of the local copy usually contains additional files with the information about the versioned files, revisions, and repository, e.g., `.git` or `.svn`
- Then, by modifying checkouted files, we modify the local copies of the particular version of the files



Repository



**checkout**

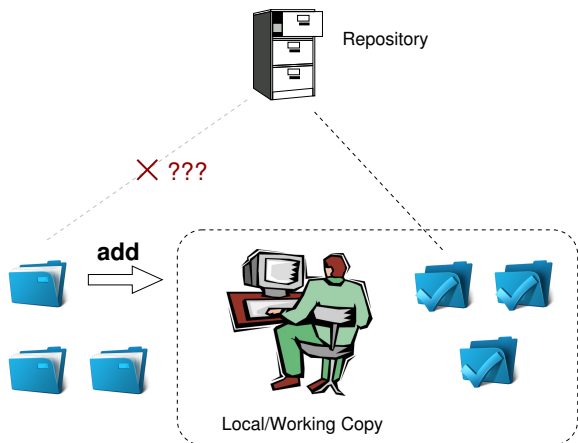


Local/Working Copy

## Adding a File to the Version Control – add

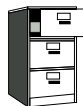
- It is necessary to inform the version control system to track particular files under version control

*Without explicit adding files, the VCS does not know which files we would like to keep under version control and which not.*



## Confirm Changes to the Repository – **commit**

- Request to accept the local modifications as a new revision of the files
- Version control system creates the closest higher version, e.g., with the revision number about one higher
- For the case there is not a newer revision in the repository (according to the local copy of the repository modified locally), changes are propagated to the repository; Otherwise:
  - Update the locally copy of the versioned files to the newer version from the repository
  - If mergers are not handled automatically, it is necessary to handle conflicts



Repository



**commit**

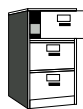


Local/Working Copy

Notice, each commit should be commented by a meaningful, clear, and not obvious comment.

# Update the Local Version of the Files from the Repository - update

- Update the current local copy of the versioned files from the repository to a newer (or specified) revision from the repository
- If changes of the versioned files is compatible with local modifications, files are automatically merged
- Otherwise it is necessary to manage the conflicts and select the correct version manually



Repository



**update**



Local/Working Copy



# Resolving Conflicts

- **Version Control System (VCS)** does not prevent the conflicts, but it provides **tools for resolving the conflicts**
- Conflict is usually caused by simultaneous modification of the same part in the source file
- Conflicts can be avoided by suitable structure of the source files, using modules, and the overall organization of the project files and team work
- Conflicts can be further avoided by specifying access rights to particular files and developers (authorization)

## Example of the Merge File with Marked Conflict

- Conflict – incompatible changes of the same lines

```
1169     fprintf(stdout, "%d [%.31f, %.31f]\n", i,
1170     }
1171 <<<<<< vis.cpp
1172     G=12*cities.number;
1173     //G=12.41*4+0.06;
1174 =====
1175     G=12.41*cities.number+0.06;
1176 >>>>>> 1.12.2.48
1177     separate = false;
1178     return 0;
1179 }
1180
1181 /// -----
1182 int CMap::coords_size(double * min_x, double * m
1183 {
```

# Visualization of Differences

```

vis.cpp (CVS r1.12.2.3)                                     vis.cpp (CVS r1.12.2.28)
4219 }                                                         5237 }
4220 //-----                                                 5238 //-----
4221 //-----                                                 5239 //-----
4222 int CVisiblePolygon::convert_to_gpc(void)                 5240 int CVisiblePolygon::convert_to_gpc(void)
4223 {                                                         5241 {
4224     // fprintf(stdout, "konvert to gpc %d\n", number_poi  5242     // fprintf(stdout, "konvert to gpc %d\n", number_poi
4225     // gpc_polygon gpc1;                                     5243     // gpc_polygon gpc1;
4226     // gpc = new gpc_polygon;                               5244     // gpc = new gpc_polygon;
4227     gpc_vertex_list contour;                              5245     gpc_vertex_list contour;
4228     gpc_free_polygon(&visible_gpc_polygon);              5246     gpc_free_polygon(&visible_gpc_polygon);
4229                                                         5247
4229     gpc_vertex * body = new gpc_vertex[number_points];  5248     gpc_vertex * body = new gpc_vertex[number_points];
4230                                                         5249
4231     for (int i = 0; i < number_points; i++)              5250     for (int i = 0; i < number_points; i++)
4232     {                                                         5251     {
4233         body[i].x = _points[i].x; body[i].y = _points[i].y;  5252         body[i].x = _points[i].x; body[i].y = _points[i].y;
4234         // fprintf(stdout, "%lf %lf\n", body[i].x, body[i].  5253         // fprintf(stdout, "%lf %lf\n", body[i].x, body[i].
4235     }                                                         5254     }
4236     contour.vertex = body;                                5255     contour.vertex = body;
4237     contour.num_vertices = number_points;                 5256     contour.num_vertices = number_points;
4238     gpc_add_contour(&visible_gpc_polygon, &contour, 1);  5257     gpc_add_contour(&visible_gpc_polygon, &contour, 1);
4239                                                         5258     delete[] body;
4240     return 0;                                             5259     return 0;
4241                                                         5260 }
4242                                                         5261 }
4243                                                         5262 }
4244                                                         5263 //-----
4245 //-----                                                 5264 //-----
4246                                                         5265 //-----
4247                                                         5266 void CVisiblePolygon::print(void)
4248                                                         5267 {
4249                                                         5268     for (int i = 0; i < number_points; i++)
4250                                                         5269         fprintf(stdout, "id %d %.3lf %.3lf\n", i, _points[i]
4251                                                         5270
4252                                                         5271
4253                                                         5272
4254                                                         5273
4255                                                         5274
4256                                                         5275
4257                                                         5276
4258                                                         5277
4259                                                         5278
4260                                                         5279
4261                                                         5280
4262                                                         5281
4263                                                         5282
4264                                                         5283
4265                                                         5284
4266                                                         5285
4267                                                         5286
4268                                                         5287
4269                                                         5288
4270                                                         5289
4271                                                         5290
4272                                                         5291
4273                                                         5292
4274                                                         5293
4275                                                         5294
4276                                                         5295
4277                                                         5296
4278                                                         5297
4279                                                         5298
4280                                                         5299
4281                                                         5300
4282                                                         5301
4283                                                         5302
4284                                                         5303
4285                                                         5304
4286                                                         5305
4287                                                         5306
4288                                                         5307
4289                                                         5308
4290                                                         5309
4291                                                         5310
4292                                                         5311
4293                                                         5312
4294                                                         5313
4295                                                         5314
4296                                                         5315
4297                                                         5316
4298                                                         5317
4299                                                         5318
4300                                                         5319
4301                                                         5320
4302                                                         5321
4303                                                         5322
4304                                                         5323
4305                                                         5324
4306                                                         5325
4307                                                         5326
4308                                                         5327
4309                                                         5328
4310                                                         5329
4311                                                         5330
4312                                                         5331
4313                                                         5332
4314                                                         5333
4315                                                         5334
4316                                                         5335
4317                                                         5336
4318                                                         5337
4319                                                         5338
4320                                                         5339
4321                                                         5340
4322                                                         5341
4323                                                         5342
4324                                                         5343
4325                                                         5344
4326                                                         5345
4327                                                         5346
4328                                                         5347
4329                                                         5348
4330                                                         5349
4331                                                         5350
4332                                                         5351
4333                                                         5352
4334                                                         5353
4335                                                         5354
4336                                                         5355
4337                                                         5356
4338                                                         5357
4339                                                         5358
4340                                                         5359
4341                                                         5360
4342                                                         5361
4343                                                         5362
4344                                                         5363
4345                                                         5364
4346                                                         5365
4347                                                         5366
4348                                                         5367
4349                                                         5368
4350                                                         5369
4351                                                         5370
4352                                                         5371
4353                                                         5372
4354                                                         5373
4355                                                         5374
4356                                                         5375
4357                                                         5376
4358                                                         5377
4359                                                         5378
4360                                                         5379
4361                                                         5380
4362                                                         5381
4363                                                         5382
4364                                                         5383
4365                                                         5384
4366                                                         5385
4367                                                         5386
4368                                                         5387
4369                                                         5388
4370                                                         5389
4371                                                         5390
4372                                                         5391
4373                                                         5392
4374                                                         5393
4375                                                         5394
4376                                                         5395
4377                                                         5396
4378                                                         5397
4379                                                         5398
4380                                                         5399
4381                                                         5400
4382                                                         5401
4383                                                         5402
4384                                                         5403
4385                                                         5404
4386                                                         5405
4387                                                         5406
4388                                                         5407
4389                                                         5408
4390                                                         5409
4391                                                         5410
4392                                                         5411
4393                                                         5412
4394                                                         5413
4395                                                         5414
4396                                                         5415
4397                                                         5416
4398                                                         5417
4399                                                         5418
4400                                                         5419
4401                                                         5420
4402                                                         5421
4403                                                         5422
4404                                                         5423
4405                                                         5424
4406                                                         5425
4407                                                         5426
4408                                                         5427
4409                                                         5428
4410                                                         5429
4411                                                         5430
4412                                                         5431
4413                                                         5432
4414                                                         5433
4415                                                         5434
4416                                                         5435
4417                                                         5436
4418                                                         5437
4419                                                         5438
4420                                                         5439
4421                                                         5440
4422                                                         5441
4423                                                         5442
4424                                                         5443
4425                                                         5444
4426                                                         5445
4427                                                         5446
4428                                                         5447
4429                                                         5448
4430                                                         5449
4431                                                         5450
4432                                                         5451
4433                                                         5452
4434                                                         5453
4435                                                         5454
4436                                                         5455
4437                                                         5456
4438                                                         5457
4439                                                         5458
4440                                                         5459
4441                                                         5460
4442                                                         5461
4443                                                         5462
4444                                                         5463
4445                                                         5464
4446                                                         5465
4447                                                         5466
4448                                                         5467
4449                                                         5468
4450                                                         5469
4451                                                         5470
4452                                                         5471
4453                                                         5472
4454                                                         5473
4455                                                         5474
4456                                                         5475
4457                                                         5476
4458                                                         5477
4459                                                         5478
4460                                                         5479
4461                                                         5480
4462                                                         5481
4463                                                         5482
4464                                                         5483
4465                                                         5484
4466                                                         5485
4467                                                         5486
4468                                                         5487
4469                                                         5488
4470                                                         5489
4471                                                         5490
4472                                                         5491
4473                                                         5492
4474                                                         5493
4475                                                         5494
4476                                                         5495
4477                                                         5496
4478                                                         5497
4479                                                         5498
4480                                                         5499
4481                                                         5500
4482                                                         5501
4483                                                         5502
4484                                                         5503
4485                                                         5504
4486                                                         5505
4487                                                         5506
4488                                                         5507
4489                                                         5508
4490                                                         5509
4491                                                         5510
4492                                                         5511
4493                                                         5512
4494                                                         5513
4495                                                         5514
4496                                                         5515
4497                                                         5516
4498                                                         5517
4499                                                         5518
4500                                                         5519
4501                                                         5520
4502                                                         5521
4503                                                         5522
4504                                                         5523
4505                                                         5524
4506                                                         5525
4507                                                         5526
4508                                                         5527
4509                                                         5528
4510                                                         5529
4511                                                         5530
4512                                                         5531
4513                                                         5532
4514                                                         5533
4515                                                         5534
4516                                                         5535
4517                                                         5536
4518                                                         5537
4519                                                         5538
4520                                                         5539
4521                                                         5540
4522                                                         5541
4523                                                         5542
4524                                                         5543
4525                                                         5544
4526                                                         5545
4527                                                         5546
4528                                                         5547
4529                                                         5548
4530                                                         5549
4531                                                         5550
4532                                                         5551
4533                                                         5552
4534                                                         5553
4535                                                         5554
4536                                                         5555
4537                                                         5556
4538                                                         5557
4539                                                         5558
4540                                                         5559
4541                                                         5560
4542                                                         5561
4543                                                         5562
4544                                                         5563
4545                                                         5564
4546                                                         5565
4547                                                         5566
4548                                                         5567
4549                                                         5568
4550                                                         5569
4551                                                         5570
4552                                                         5571
4553                                                         5572
4554                                                         5573
4555                                                         5574
4556                                                         5575
4557                                                         5576
4558                                                         5577
4559                                                         5578
4560                                                         5579
4561                                                         5580
4562                                                         5581
4563                                                         5582
4564                                                         5583
4565                                                         5584
4566                                                         5585
4567                                                         5586
4568                                                         5587
4569                                                         5588
4570                                                         5589
4571                                                         5590
4572                                                         5591
4573                                                         5592
4574                                                         5593
4575                                                         5594
4576                                                         5595
4577                                                         5596
4578                                                         5597
4579                                                         5598
4580                                                         5599
4581                                                         5600
4582                                                         5601
4583                                                         5602
4584                                                         5603
4585                                                         5604
4586                                                         5605
4587                                                         5606
4588                                                         5607
4589                                                         5608
4590                                                         5609
4591                                                         5610
4592                                                         5611
4593                                                         5612
4594                                                         5613
4595                                                         5614
4596                                                         5615
4597                                                         5616
4598                                                         5617
4599                                                         5618
4600                                                         5619
4601                                                         5620
4602                                                         5621
4603                                                         5622
4604                                                         5623
4605                                                         5624
4606                                                         5625
4607                                                         5626
4608                                                         5627
4609                                                         5628
4610                                                         5629
4611                                                         5630
4612                                                         5631
4613                                                         5632
4614                                                         5633
4615                                                         5634
4616                                                         5635
4617                                                         5636
4618                                                         5637
4619                                                         5638
4620                                                         5639
4621                                                         5640
4622                                                         5641
4623                                                         5642
4624                                                         5643
4625                                                         5644
4626                                                         5645
4627                                                         5646
4628                                                         5647
4629                                                         5648
4630                                                         5649
4631                                                         5650
4632                                                         5651
4633                                                         5652
4634                                                         5653
4635                                                         5654
4636                                                         5655
4637                                                         5656
4638                                                         5657
4639                                                         5658
4640                                                         5659
4641                                                         5660
4642                                                         5661
4643                                                         5662
4644                                                         5663
4645                                                         5664
4646                                                         5665
4647                                                         5666
4648                                                         5667
4649                                                         5668
4650                                                         5669
4651                                                         5670
4652                                                         5671
4653                                                         5672
4654                                                         5673
4655                                                         5674
4656                                                         5675
4657                                                         5676
4658                                                         5677
4659                                                         5678
4660                                                         5679
4661                                                         5680
4662                                                         5681
4663                                                         5682
4664                                                         5683
4665                                                         5684
4666                                                         5685
4667                                                         5686
4668                                                         5687
4669                                                         5688
4670                                                         5689
4671                                                         5690
4672                                                         5691
4673                                                         5692
4674                                                         5693
4675                                                         5694
4676                                                         5695
4677                                                         5696
4678                                                         5697
4679                                                         5698
4680                                                         5699
4681                                                         5700
4682                                                         5701
4683                                                         5702
4684                                                         5703
4685                                                         5704
4686                                                         5705
4687                                                         5706
4688                                                         5707
4689                                                         5708
4690                                                         5709
4691                                                         5710
4692                                                         5711
4693                                                         5712
4694                                                         5713
4695                                                         5714
4696                                                         5715
4697                                                         5716
4698                                                         5717
4699                                                         5718
4700                                                         5719
4701                                                         5720
4702                                                         5721
4703                                                         5722
4704                                                         5723
4705                                                         5724
4706                                                         5725
4707                                                         5726
4708                                                         5727
4709                                                         5728
4710                                                         5729
4711                                                         5730
4712                                                         5731
4713                                                         5732
4714                                                         5733
4715                                                         5734
4716                                                         5735
4717                                                         5736
4718                                                         5737
4719                                                         5738
4720                                                         5739
4721                                                         5740
4722                                                         5741
4723                                                         5742
4724                                                         5743
4725                                                         5744
4726                                                         5745
4727                                                         5746
4728                                                         5747
4729                                                         5748
4730                                                         5749
4731                                                         5750
4732                                                         5751
4733                                                         5752
4734                                                         5753
4735                                                         5754
4736                                                         5755
4737                                                         5756
4738                                                         5757
4739                                                         5758
4740                                                         5759
4741                                                         5760
4742                                                         5761
4743                                                         5762
4744                                                         5763
4745                                                         5764
4746                                                         5765
4747                                                         5766
4748                                                         5767
4749                                                         5768
4750                                                         5769
4751                                                         5770
4752                                                         5771
4753                                                         5772
4754                                                         5773
4755                                                         5774
4756                                                         5775
4757                                                         5776
4758                                                         5777
4759                                                         5778
4760                                                         5779
4761                                                         5780
4762                                                         5781
4763                                                         5782
4764                                                         5783
4765                                                         5784
4766                                                         5785
4767                                                         5786
4768                                                         5787
4769                                                         5788
4770                                                         5789
4771                                                         5790
4772                                                         5791
4773                                                         5792
4774                                                         5793
4775                                                         5794
4776                                                         5795
4777                                                         5796
4778                                                         5797
4779                                                         5798
4780                                                         5799
4781                                                         5800
4782                                                         5801
4783                                                         5802
4784                                                         5803
4785                                                         5804
4786                                                         5805
4787                                                         5806
4788                                                         5807
4789                                                         5808
4790                                                         5809
4791                                                         5810
4792                                                         5811
4793                                                         5812
4794                                                         5813
4795                                                         5814
4796                                                         5815
4797                                                         5816
4798                                                         5817
4799                                                         5818
4800                                                         5819
4801                                                         5820
4802                                                         5821
4803                                                         5822
4804                                                         5823
4805                                                         5824
4806                                                         5825
4807                                                         5826
4808                                                         5827
4809                                                         5828
4810                                                         5829
4811                                                         5830
4812                                                         5831
4813                                                         5832
4814                                                         5833
4815                                                         5834
4816                                                         5835
4817                                                         5836
4818                                                         5837
4819                                                         5838
4820                                                         5839
4821                                                         5840
4822                                                         5841
4823                                                         5842
4824                                                         5843
4825                                                         5844
4826                                                         5845
4827                                                         5846
4828                                                         5847
4829                                                         5848
4830                                                         5849
4831                                                         5850
4832                                                         5851
4833                                                         5852
4834                                                         5853
4835                                                         5854
4836                                                         5855
4837                                                         5856
4838                                                         5857
4839                                                         5858
4840                                                         5859
4841                                                         5860
4842                                                         5861
4843                                                         5862
4844                                                         5863
4845                                                         5864
4846                                                         5865
4847                                                         5866
4848                                                         5867
4849                                                         5868
4850                                                         5869
4851                                                         5870
4852                                                         5871
4853                                                         5872
4854                                                         5873
4855                                                         5874
4856                                                         5875
4857                                                         5876
4858                                                         5877
4859                                                         5878
4860                                                         5879
4861                                                         5880
4862                                                         5881
4863                                                         5882
4864                                                         5883
4865                                                         5884
4866                                                         5885
4867                                                         5886
4868                                                         5887
4869                                                         5888
4870                                                         5889
4871                                                         5890
4872                                                         5891
4873                                                         5892
4874                                                         5893
4875                                                         5894
4876                                                         5895
4877                                                         5896
4878                                                         5897
4879                                                         5898
4880                                                         5899
4881                                                         5900
4882                                                         5901
4883                                                         5902
4884                                                         5903
4885                                                         5904
4886                                                         5905
4887                                                         5906
4888                                                         5907
4889                                                         5908
4890                                                         5909
4891                                                         5910
4892                                                         5911
4893                                                         5912
4894                                                         5913
4895                                                         5914
4896                                                         5915
4897                                                         5916
4898                                                         5917
4899                                                         5918
4900                                                         5919
4901                                                         5920
4902                                                         5921
4903                                                         5922
4904                                                         5923
4905                                                         5924
4906                                                         5925
4907                                                         5926
4908                                                         5927
4909                                                         5928
4910                                                         5929
4911                                                         5930
4912                                                         5931
4913                                                         5932
4914                                                         5933
4915                                                         5934
4916                                                         5935
4917                                                         5936
4918                                                         5937
4919                                                         5938
4920                                                         5939
4921                                                         5940
4922                                                         5941
4923                                                         5942
4924                                                         5943
4925                                                         5944
4926                                                         5945
4927                                                         5946
4928                                                         5947
4929                                                         5948
4930                                                         5949
4931                                                         5950
4932                                                         5951
4933                                                         5952
4934                                                         5953
4935                                                         5954
4936                                                         5955
4937                                                         5956
4938                                                         5957
4939                                                         5958
4940                                                         5959
4941                                                         5960
4942                                                         5961
4943                                                         5962
4944                                                         5963
4945                                                         5964
4946                                                         5965
4947                                                         5966
4948                                                         5967
4949                                                         5968
4950                                                         5969
4951                                                         5970
4952                                                         5971
4953                                                         5972
4954                                                         5973
4955                                                         5974
4956                                                         5975
4957                                                         5976
4958                                                         5977
4959                                                         5978
4960                                                         5979
4961                                                         5980
4962                                                         5981
4963                                                         5982
4964                                                         5983
4965                                                         5984
4966                                                         5985
4967                                                         5986
4968                                                         5987
4969                                                         5988
4970                                                         5989
4971                                                         5990
4972                                                         5991
4973                                                         5992
4974                                                         5993
4975                                                         5994
4976                                                         5995
4977                                                         5996
4978                                                         5997
4979                                                         5998
4980                                                         5999
4981                                                         6000
4982                                                         6001
4983                                                         6002
4984                                                         6003
4985                                                         6004
4986                                                         6005
4987                                                         6006
4988                                                         6007
4989                                                         6008
4990                                                         6009
4991                                                         6010
4992                                                         6011
4993                                                         6012
4994                                                         6013
4995                                                         6014
4996                                                         6015
4997                                                         6016
4998                                                         6017
4999                                                         6018
5000                                                         6019
5001                                                         6020
5002                                                         6021
5003                                                         6022
5004                                                         6023
5005                                                         6024
5006                                                         6025
5007                                                         6026
5008                                                         6027
5009                                                         6028
5010                                                         6029
5011                                                         6030
5012                                                         6031
5013                                                         6032
5014                                                         6033
5015                                                         6034
5016                                                         6035
5017                                                         6036
5018                                                         6037
5019                                                         6038
5020                                                         6039
5021                                                         6040
5022                                                         6041
5023                                                         6042
5024                                                         6043
5025                                                         6044
5026                                                         6045
5027                                                         6046
5028                                                         6047
5029                                                         6048
5030                                                         6049
5031                                                         6050
5032                                                         6051
5033                                                         6052
5034                                                         6053
5035                                                         6054
5036                                                         6055
5037                                                         6056
5038                                                         6057
5039                                                         6058
5040                                                         6059
5041                                                         6060
5042                                                         6061
5043                                                         6062
5044                                                         6063
5045                                                         6064
5046                                                         6065
5047                                                         6066
5048                                                         6067
5049                                                         6068
5050                                                         6069
5051                                                         6070
5052                                                         6071
5053                                                         6072
5054                                                         6073
5055                                                         6074
5056                                                         6075
5057                                                         6076
5058                                                         6077
5059                                                         6078
5060                                                         6079
5061                                                         6080
5062                                                         6081
5063                                                         6082
5064                                                         6083
5065                                                         6084
5066                                                         6085
5067                                                         6086
5068                                                         6087
5069                                                         6088
5070                                                         6089
5071                                                         6090
5072                                                         6091
5073                                                         6092
5074                                                         6093
5075                                                         6094
5076                                                         6095
5077                                                         6096
5078                                                         6097
5079                                                         6098
5080                                                         6099
5081                                                         6100
5082                                                         6101
5083                                                         6102
5084                                                         6103
5085                                                         6104
5086                                                         6105
5087                                                         6106
5088                                                         6107
5089                                                         6108
5090                                                         6109
5091                                                         6110
5092                                                         6111
5093                                                         6112
5094                                                         6113
5095                                                         6114
5096                                                         6115
5097                                                         6116
5098                                                         6117
5099                                                         6118
5100                                                         6119
5101                                                         6120
5102                                                         6121
5103                                                         6122
5104                                                         6123
5105                                                         6124
5106                                                         6125
5107                                                         6126
5108                                                         6127
5109                                                         6128
5110                                                         6129
5111                                                         6130
5112                                                         6131
5113                                                         6132
5114                                                         6133
5115                                                         6134
5116                                                         6135
5117                                                         6136
5118                                                         6137
5119                                                         6138
5120                                                         6139
5121                                                         6140
5122                                                         6141
5123                                                         6142
5124                                                         6143
5125                                                         6144
5126                                                         6145
5127                                                         6146
5128                                                         6147
5129                                                         6148
5130                                                         6149
5131                                                         6150
5132                                                         6151
5133                                                         6152
5134                                                         6153
5135                                                         6154
5136                                                         6155
5137                                                         6156
5138                                                         6157
5139                                                         6158
5140                                                         6159
5141                                                         6160
5142                                                         6161
5143                                                         6162
5144                                                         6163
5145                                                         6164
5146                                                         6165
5147                                                         6166
5148                                                         6167
5149                                                         6168
5150                                                         6169
5151                                                         6170
5152                                                         6171
5153                                                         6172
5154                                                         6173
5155                                                         6174
5156                                                         6175
5157                                                         6176
5158                                                         6177
5159                                                         6178
5160                                                         6179
5161                                                         6180
5162                                                         6181
5163                                                         6182
5164                                                         6183
5165                                                         6184
5166                                                         6185
5167                                                         6186
5168                                                         6187
5169                                                         6188
5170                                                         6189
5171                                                         6190
5172                                                         6191
5173                                                         6192
5174                                                         6193
5175                                                         6194
5176                                                         6195
5177                                                         6196
5178                                                         6197
5179                                                         6198
5180                                                         6199
5181                                                         6200
5182                                                         6201
5183                                                         6202
5184                                                         6203
5185                                                         6204
5186                                                         6205
5187                                                         6206
5188                                                         6207
5189                                                         6208
5190                                                         6209
5191                                                         6210
5192                                                         6211
5193                                                         6212
5194                                                         6213
5195                                                         6214
5196                                                         6215
5197                                                         6216
5198                                                         6217
5199                                                         6218
5200                                                         6219
5201                                                         6220
5202                                                         6221
5203                                                         6222
5204                                                         6223
5205                                                         6224
5206                                                         6225
5207                                                         6226
5208                                                         6227
5209                                                         6228
5210                                                         6229
5211                                                         6230
5212                                                         6231
5213                                                         6232
5214                                                         6233
5215                                                         6234
5216                                                         6235
5217                                                         6236
5218                                                         6237
5219                                                         6238
5220                                                         6239
5221                                                         6240
5222                                                         6241
5223                                                         6242
5224                                                         6243
5225                                                         6244
5226                                                         6245
5227                                                         6246
5228                                                         6247
5229                                                         6248
5230                                                         6249
5231                                                         6250
5232                                                         6251
5233                                                         6252
5234                                                         6253
5235                                                         6254
5236                                                         6255
5237                                                         6256
5238                                                         6257
5239                                                         6258
5240                                                         6259
5241                                                         6260
5242                                                         6261
5243                                                         6262
5244                                                         6263
5245                                                         6264
5246                                                         6265
5247                                                         6266
5248                                                         6267
5249                                                         6268
5250                                                         6269
5251                                                         6270
5252                                                         6271
5253                                                         6272
5254                                                         6273
5255                                                         6274
5256                                                         6275
5257                                                         6276
5258                                                         6277
5259                                                         6278
5260                                                         6279
5261                                                         6280
5262                                                         6281
5263                                                         6282
5264                                                         6283
5265                                                         6284
5266                                                         6285
5267                                                         6286
5268                                                         6287
5269                                                         6288
5270                                                         6289
5271                                                         6290
52
```

## Tagging – Point in Time Marking

- VCS keeps the history of the versioned files
- We can label the particular state of the repository in the time by a **tag**, e.g., Release\_1.0
- Tag – is a symbolic name for a particular version (state) of the repository
- **HEAD** tag is usually used for the current version of the repository

## Branching and Branch Names

- Allows to work in parallel on different ideas / streams / implementations, e.g. for
  - Incremental update to newer techniques and technologies
  - Testing and evaluation of novel approaches before including them into the main product branch

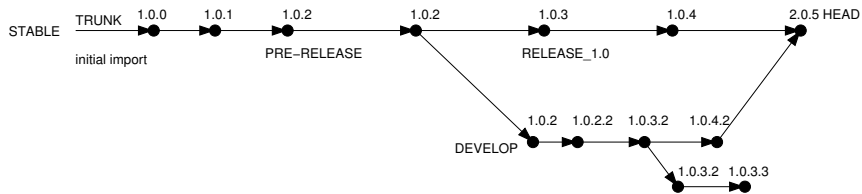
There are common branch names:

- CURRENT, TRUNK - the main development branch
- STABLE - stable development branch

*Commit into to the STABLE branch should not disrupt the activities of other developers. E.g., Before merging into the STABLE branch, all changes in API should be propagate to other parts.*

Using many branches for the development, branch merge may be the crucial property of the version control system

# Example of Branches



# Centralized vs. Distributed

## Centralized

- Single repository
  - Precisely specified source of record  
*Straightforward authorization*  
*Single point of failure*
  - Version ids are usually sequential numbers  
*Easy to remember and referenced*  
*Revision number can be the whole repository*
- If repository on the server, it may require network
- Generally less use of branching for experimentation

## Distributed

- Every user has a full copy of the repository  
*Complicated authorization*  
*Redundant copies, more robust to failures*  
*May require unnecessary data space for huge repositories*
- Offline work usually possible  
*Commit to local repository*
- Version ids are usually a GUID (Globally Unique Identifier)
- More branching and sharing

## Example of VCS

- Sometimes may also be called as Source Code Manager (SCM)
- Many VCSs exist as both free/open source and proprietary
  - [https://en.wikipedia.org/wiki/List\\_of\\_version\\_control\\_software](https://en.wikipedia.org/wiki/List_of_version_control_software)
- Local only: SCCS (1972), RCS (1982), PVCS<sup>1</sup> (1985), QVCS<sup>1</sup> (1991)
- Client-server: CVS (1986), ClearCase<sup>1</sup> (1992), Perforce<sup>1</sup> (1995), Subversion (2000), Surround SCM<sup>1</sup> (2002), Visual Studio Team Services<sup>1</sup> (2014)
- Distributed: BitKeeper (1998), Darcs (2002), SVK (2003), Bazaar (2005), Mercurial (2005), Git (2005), Plastic SCM<sup>1</sup> (2006), Visual Studio Team Services (2014)<sup>1</sup>
- Free/open-source – **Subversion, Git**
- Proprietary – Surround SCM, Plastic SCM

---

<sup>1</sup>Proprietary

<http://www.seapine.com/surround-scm/overview>, <https://www.plasticscm.com>

It is good to know and be aware what systems are available and what are their limitations and features. Knowledge of fundamental principles may help you to make a right choice.

[https://en.wikipedia.org/wiki/Comparison\\_of\\_version\\_control\\_software](https://en.wikipedia.org/wiki/Comparison_of_version_control_software)



# Subversion and Git – Main Difference

## ■ Subversion

- Central repository approach – the main repository is the only source and only the main repository has the complete file history
- Users checkout local copies of the current version
- It includes authorization to particular directories
- Its revision id is a number for a whole repository
- Tags and branches are directories (cheap-copy)

*Allows easy and straightforward multiple versions (branches/tags) alongside*

## ■ Git

- Distributed repository approach – every checkout of the repository is a full repository with complete history
- Greater redundancy with higher speed
- Branching and merging repositories is more heavily used

*Branches and tags are “markers” of the subset of the repository*

What the best fits your needs depends on the way how you expect to use it. It also holds for single user usage. Imagine a situation with a single main laptop (do not rely on single HDD/SSD). Or a situation with several workstations and laptops.

**Learn what you need!**

# Literature

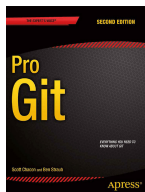
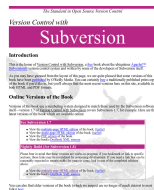
- For both systems Subversion and Git, there are several books also available for download or on-line readings

- Subversion**

<http://svnbook.red-bean.com/>

- Git**

<https://git-scm.com/book/en/v2>



# Subversion

- <http://subversion.apache.org>
- Apache Subversion 1.9.5 Release (2016-11-29)
  - Milestone 1 - September 2000,
  - Subversion 0.8 - January 2002,
  - Subversion 0.37 (1.0.0-RC1) - January 2004,
  - Subversion 1.0.0 - February 2004,
  - Subversion 1.1.0 - September 2004,
  - Subversion 1.2.0 - May 2005,
  - Subversion 1.3.0 - January 2006,
  - Subversion 1.4.0 - September 2006,
  - Subversion 1.5.0 - June 2008,
  - Subversion 1.6.0 - March 2009
  - Subversion 1.7.0 - October 2011 (Apache Foundation),
  - Subversion 1.8.0 - June 2012,
  - Subversion 1.9.0 - August, 2015

<https://subversion.apache.org/docs/release-notes/release-history.html>

## SVN – Setting up a repo

- `svnadmin` – administration changes to the SVN repository
- `svn` – for interaction with an SVN repository
  - Can be used from other applications / scripts / GUIs or using particular library calls.*
- The repository can be setup
  - Locally using local path to the repository
    - `svnadmin create /repos/myrepos`
    - `svn checkout file:///repos/myrepos my_project`
    - or using ssh account
    - `svn checkout svn+ssh://mypc.cvut.cz/repos/myrepos my_project`
- As a server services using
  - `ssh`
  - `svnserver`
  - `http` and `https` – apache2 `mod_dav_svn_module`.
    - Authentication via http(s) sessions, e.g., using LDAP*
    - Authorization using `svn-auth-file`*

## SVN – Commands 1/2

- `svn add files` – schedule files to be added at the next commit
- `svn ci [files]` - commit / check in changed files
- `svn co [files]` – check out
- `svn update [files]` - update local copy to the latest version  
(or specified version using `-r`)
- `svn help [command]` – get help info about a particular command
- `svn status [files]` – get info about the files
- `svn info` – get info about the local the repository and local copy
- `svn diff [files]` – list of changes of the local working files to the local copy
- `svn log [files]` – list commit changes

## SVN – Commands 2/2

- `svn revert files` – restore working copy to the repo's version
- `svn merge source path` – merge changes
- `svn resolve source path` – resolve merging conflicts
- `svn resolved files` – mark the files as conflicts resolved
  - E.g., after manual editing or using other tools*
- Further commands are, e.g., `blame`, `changelist`, `mkdir`, `ls`, `mv`, `lock/unlock`, `propset`, etc.
- A file can be removed from the versioning by `svn rm files`
  - The previous versions of the file are kept in the repository as a part of the history
  - The real deletion of the file is not possible (straightforwardly)
    - Obliterate feature is planned for Subversion vers. 2.0?*
    - <https://subversion.apache.org/roadmap.html>

## Subversion – Example

```
mkdir ~/svn
% svnadmin create ~/svn/my_project
% svn co file:///HOME/svn/my_project
Checked out revision 0.
% cd my_project
% vim main.c
% svn add main.c
A      main.c

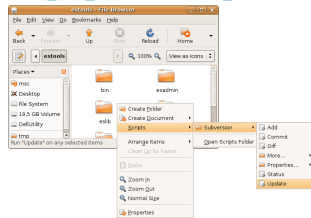
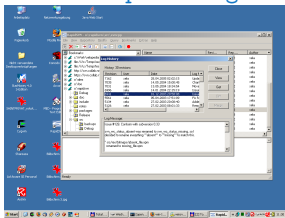
% svn ci -m "Add main program"
Adding      main.c
Transmitting file data .done
Committing transaction...
Committed revision 1.

% svn info
Path: .
Working Copy Root Path: /home/jf/my_project
URL: file:///home/jf/svn/my_project
Relative URL: ^/
Repository Root: file:///home/jf/svn/my_project
Repository UUID: 72237e9d-24c5-e611-beef-9c5c8e834429
Revision: 0
Node Kind: directory
Schedule: normal
Last Changed Rev: 0
Last Changed Date: 2016-12-18 14:19:33 +0100 (Sun, 18 Dec 2016)

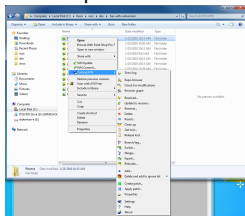
% svn up
Updating '.':
At revision 1.
```

# Subversion – Shell and IDE Integration – Examples

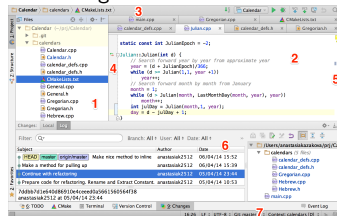
[https://en.wikipedia.org/wiki/Comparison\\_of\\_Subversion\\_clients](https://en.wikipedia.org/wiki/Comparison_of_Subversion_clients)



## RapidSVN



## Nautilus Integration



## TortoiseSVN

<https://tortoisesvn.net/ExplorerIntegration.html>

## CLion

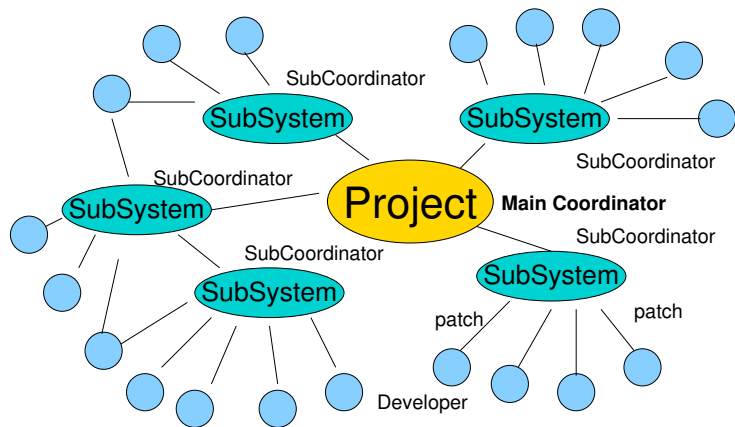
<https://www.jetbrains.com/help/clion/2016.1/quick-start-guide.html>



## Distributed Version Control System (DVCS)

- DVCS does not necessarily have a central repository
- Each developer keeps its own *local* repository
- It is usually very often to use branches
- The final version of the project is a compilation of particular branches of individual developers
- Beside Git, there are several other systems:
  - Bazaar – **bzr**
  - Monotone - <http://monotone.ca>.
  - SVK – based on Subversion <http://elixus.org/>
  - Darcs (**darcs**) – David's Advanced Revision Control System  
<http://darcs.net> *Written in Haskell*
  - Mercurial – <http://www.selenic.com/mercurial/wiki>
  - BitKeeper - <http://www.bitkeeper.com>.
  - Perforce, Plastic SCM – *proprietary software*
  - Git – **git** – created for developing the Linux kernel  
<http://git-scm.com>

# Git – Development Process of the Linux Kernel Model with a Huge Number of Developers



## Git – Properties and Features

- Local repository allows versioning without network connection

*The central repository is substituted by a responsible developer*

- Commit only adds the changes to the local repository therefore it is necessary to propagate the changes to the upstream using git push

- Can be efficient for large projects

*But it may also not be suitable*

- Files are stored as objects in a database (INDEX)

*SHA1 fingerprints as file identifiers*

- Low-level operations on top of the database are encapsulated by more user-friendly interface

- Support development a high usage of **branches**

- Support for applying path sets , e.g., delivered by e-mails

- **Tags** and **Branches** are marked points/states of the repository

- Suitability of the Git deployment depends on the project and model of the development

## Git – Usage

- `git clone path to git repository` – create a copy of the repository (in `.git` directory)
- `git remote` – setup of the repository following (`git fetch`)
- `git help command` – get help info about a particular command
- `git add`, `git status`, `git log`, `git merge`, `git rm` – commands for developing and local versioning
- `git checkout files` – update the files from the repository
- `git branch branch name` – initial a new branch based on the current revision
  
- `git pull` – update local repository with new revision at the remote repository
- `git push` – propagate local repository to a remote repository

# Git – SVN Crash Course

<http://git-scm.com/course/svn.html>

<code>git init</code>	<code>svnadmin create repo</code>
<code>git clone url</code>	<code>svn checkout url</code>
<code>git add file</code>	<code>svn add file</code>
<code>git commit -a</code>	<code>svn commit</code>
<code>git pull</code>	<code>svn update</code>
<code>git status</code>	<code>svn status</code>
<code>git log</code>	<code>svn log</code>
<code>git rm file</code>	<code>svn rm file</code>
<code>git mv file</code>	<code>svn mv file</code>
<code>git tag -a name</code>	<code>svn copy repo/trunk</code> <code>repo/tags/name</code>
<code>git branch branch</code>	<code>svn copy repo/trunk</code> <code>repo/branches/branch</code>
<code>git checkout branch</code>	<code>svn switch</code> <code>repo/branches/branch</code>

# Git – Example

```
% mkdir my_project
% cd my_project
% git init
Initialized empty Git repository in ~/my_project/.git/
% git init
% vim main.c
% git add main.c
% git st
On branch master
```

Initial commit

Changes to be committed:

(use "git rm --cached <file>..." to unstage)

new file: main.c

```
% git ci -m "Add main program"
[master (root-commit) ab2afdf] Add main program
1 file changed, 7 insertions(+)
create mode 100644 main.c
% git st
On branch master
nothing to commit, working tree clean
% git log
commit ab2afdfc60e7702f1452288c83f97e6a6926e53c
Author: Jan Faigl <faigl@fel.cvut.cz>
Date: Sun Dec 18 17:35:23 2016 +0100
```

Add main program

# FEL, GitLab

<https://gitlab.fel.cvut.cz>

- You can use the provided space for versioning sources of your semester projects and assignments
- After the cloning the repository to your local repository  
*You can **push** your changes in the local repository and **pull** modifications from the repository, e.g., made by other developers*
- You can also control access to your repositories and share them with other FEL users

*Collaboration with other students on the project*

- You need to create your private/public ssh-key to access to the GitLab
- Using server based git repository, you can combine local versioning with server based backup

## Wrap-Up – What You Can Put under Version Control?

- Source codes of your programs
- Versioning of the Third-party libraries

*Even though it make more sense to version source files, i.e., text files, you can also versioning binary files, but you cannot expect a straightforward diff.*

- Versioning documents (text/binary)
  - File and Directory Layout for Storing a Scientific Paper in Subversion

<http://blog.plesslweb.ch/post/6628076310/file-and-directory-layout-for-storing-a-scientific>

- You should definitely put sources of your diploma or bachelor thesis under version control

*Also as a sort of backup*

*Even you will use it only for your thesis,  $T_E X$  or  $L_A T_E X$  should be your option.*

- Repository and version control as an additional “backuping”

*Repository on the server may usually be located on backed up and reliable disk system.*

- Versioning can be used as a tool for sharing files

*Be aware that files are persistent in the repository!*



# Summary of the Lecture

# Topics Discussed

- An overview of history of VCSs
- Fundamental concepts and terminology
- Brief overview of existing VCSs
- Centralized and Distributed VCSs
  - Subversion – commands and basic usage
  - Git – commands and basic usage
- FEL GitLab
- Next: Exam!