



## **5. Epistasis. Linkage identification. Optimization by model fitting.**

Petr Pošík

Dept. of Cybernetics  
ČVUT FEL



# Contents

---

- Epistasis, short example
- Perturbation techniques for linkage identification
- Optimization by model fitting
- Learnable evolution model

Introduction to  
Epistasis

---

Perturbation  
Techniques of Linkage  
Identification

---

Optimization by  
Model Fitting

---

Summary

---



# Introduction to Epistasis



# Black-box Optimization and Genetic Algorithms

---

In BBO, we need to specify:

- the representation of candidate solution
- the objective function (gives the quality of a candidate solution)
  - can have almost any form (non-differentiable, discontinuous, multimodal, noisy, ...)

How to solve BBO problems?

- Algorithm applicable in the BBO scenario can only provide a candidate solution and have the objective function to evaluate it.
- It cannot require (assume, take advantage of) any other knowledge about the objective function. (It can estimate the needed knowledge...)
- Hill-climbing, simulated annealing, taboo, GAs, ...

GAs are popular:

- they are easy to use,
- applicable without prior knowledge, and
- easy to parallelize.

GAs are great, but not perfect!!!

Introduction to  
Epistasis

---

• Black-box  
Optimization and  
Genetic Algorithms

- GA works well...
- GA fails...
- GA works again...
- Epistasis
- Discussion on  
semestral projects
- Linkage  
Identification  
Techniques

Perturbation  
Techniques of Linkage  
Identification

---

Optimization by  
Model Fitting

---

Summary

---



# GA works well...

---

Problem  $f_1$ :

- defined over 40-bit strings
- the quality of the worst solution:  $f_1(x^{\text{worst}}) = 0$ .
- the quality of the best solution:  $f_1(x^{\text{opt}}) = 40$ .
- the best solution:  $x^{\text{opt}} = (1111 \dots 1)$ .

---

Introduction to  
Epistasis

- Black-box Optimization and Genetic Algorithms
- GA works well...
- GA fails...
- GA works again...
- Epistasis
- Discussion on semestral projects
- Linkage Identification Techniques

---

Perturbation  
Techniques of Linkage  
Identification

---

Optimization by  
Model Fitting

---

Summary



# GA works well...

Problem  $f_1$ :

- defined over 40-bit strings
- the quality of the worst solution:  $f_1(x^{\text{worst}}) = 0$ .
- the quality of the best solution:  $f_1(x^{\text{opt}}) = 40$ .
- the best solution:  $x^{\text{opt}} = (1111 \dots 1)$ .

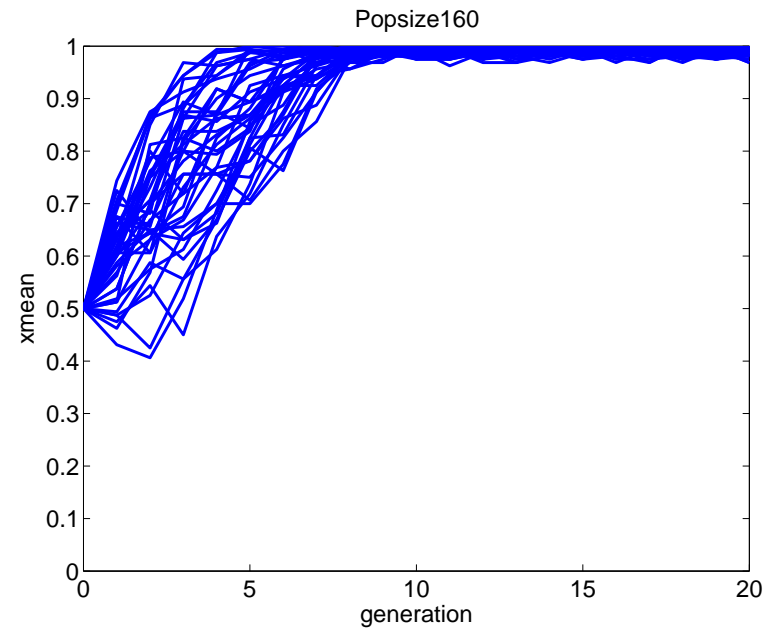
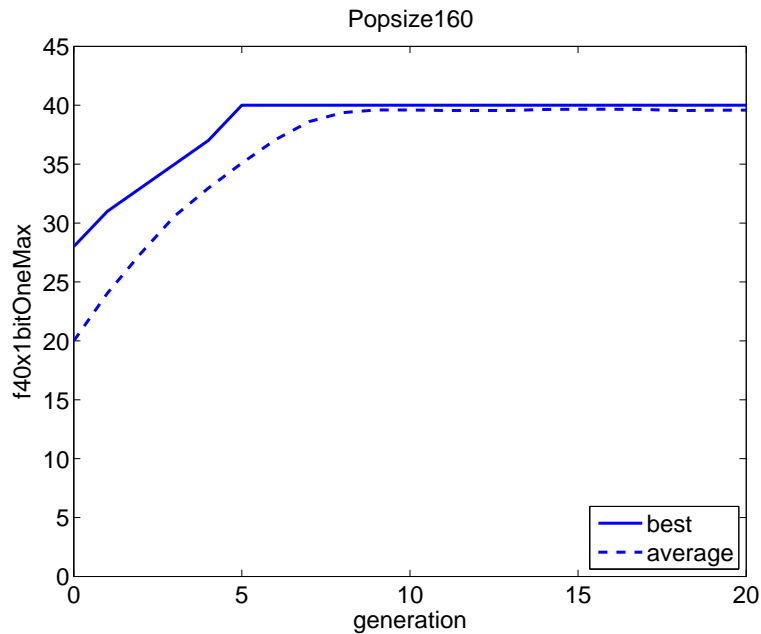
Introduction to  
Epistasis

- Black-box Optimization and Genetic Algorithms
- GA works well...
- GA fails...
- GA works again...
- Epistasis
- Discussion on semestral projects
- Linkage Identification Techniques

Perturbation  
Techniques of Linkage  
Identification

Optimization by  
Model Fitting

Summary





# GA works well...

Problem  $f_1$ :

- defined over 40-bit strings
- the quality of the worst solution:  $f_1(x^{\text{worst}}) = 0$ .
- the quality of the best solution:  $f_1(x^{\text{opt}}) = 40$ .
- the best solution:  $x^{\text{opt}} = (1111 \dots 1)$ .

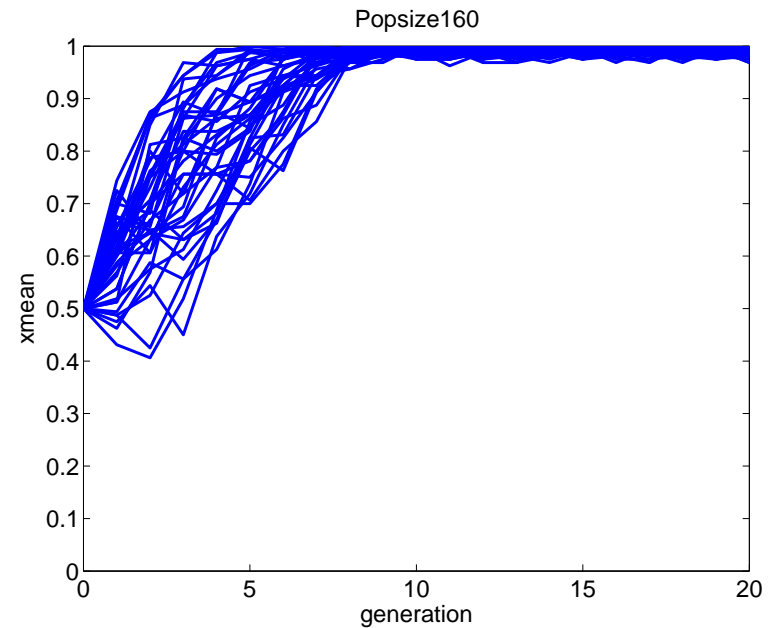
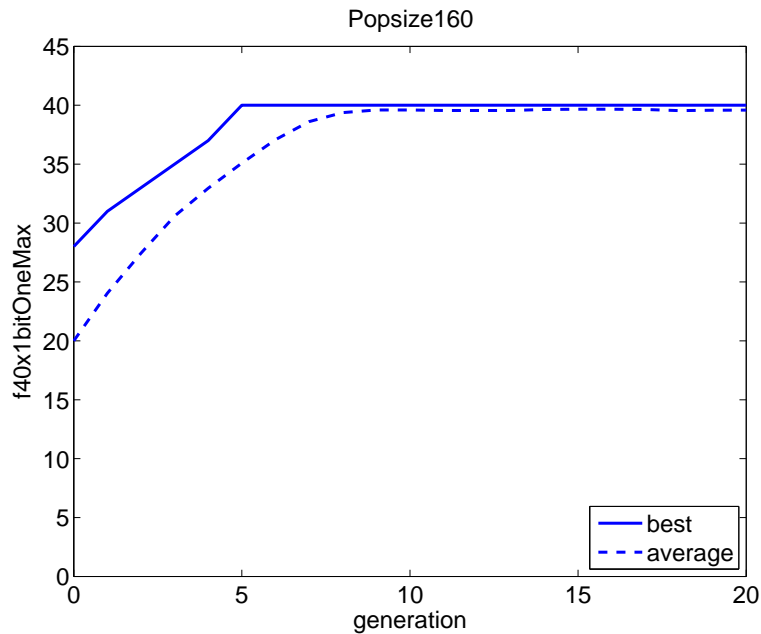
Introduction to Epistasis

- Black-box Optimization and Genetic Algorithms
- GA works well...
- GA fails...
- GA works again...
- Epistasis
- Discussion on semestral projects
- Linkage Identification Techniques

Perturbation Techniques of Linkage Identification

Optimization by Model Fitting

Summary



The  $f_1$  problem contains no epistatic interactions among design variables.



## GA fails...

---

Problem  $f_2$ :

- defined over 40-bit strings
- the quality of the worst solution:  $f_2(x^{\text{worst}}) = 0$ .
- the quality of the best solution:  $f_2(x^{\text{opt}}) = 40$ .
- the best solution:  $x^{\text{opt}} = (1111 \dots 1)$ .

---

Introduction to  
Epistasis

- Black-box Optimization and Genetic Algorithms
- GA works well...
- **GA fails...**
- GA works again...
- Epistasis
- Discussion on semestral projects
- Linkage Identification Techniques

---

Perturbation  
Techniques of Linkage  
Identification

---

Optimization by  
Model Fitting

---

Summary





# GA fails...

Problem  $f_2$ :

- defined over 40-bit strings
- the quality of the worst solution:  $f_2(x^{\text{worst}}) = 0$ .
- the quality of the best solution:  $f_2(x^{\text{opt}}) = 40$ .
- the best solution:  $x^{\text{opt}} = (1111 \dots 1)$ .

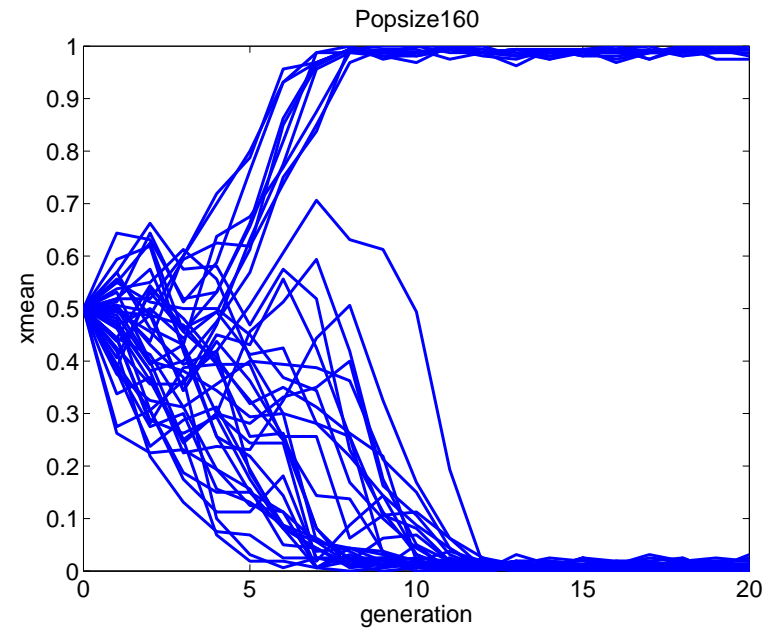
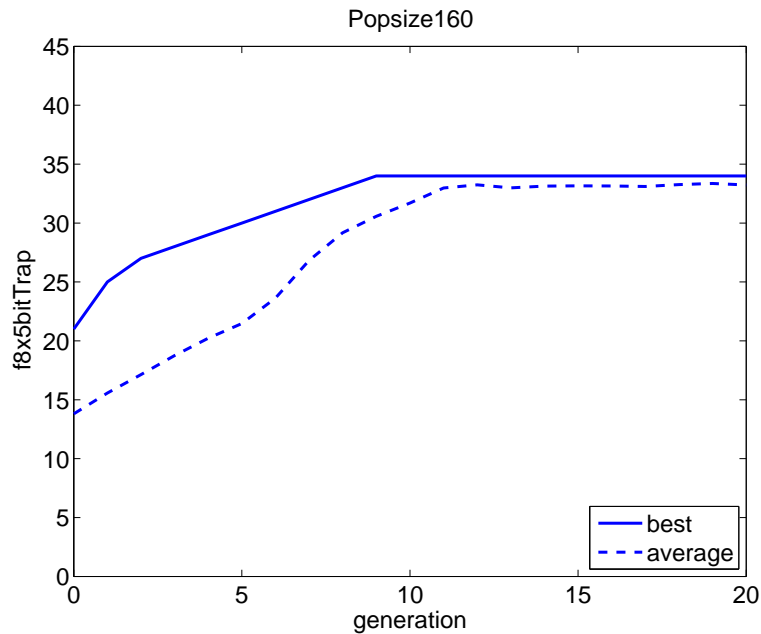
Introduction to Epistasis

- Black-box Optimization and Genetic Algorithms
- GA works well...
- **GA fails...**
- GA works again...
- Epistasis
- Discussion on semestral projects
- Linkage Identification Techniques

Perturbation Techniques of Linkage Identification

Optimization by Model Fitting

Summary





## GA fails...

Problem  $f_2$ :

- defined over 40-bit strings
- the quality of the worst solution:  $f_2(x^{\text{worst}}) = 0$ .
- the quality of the best solution:  $f_2(x^{\text{opt}}) = 40$ .
- the best solution:  $x^{\text{opt}} = (1111 \dots 1)$ .

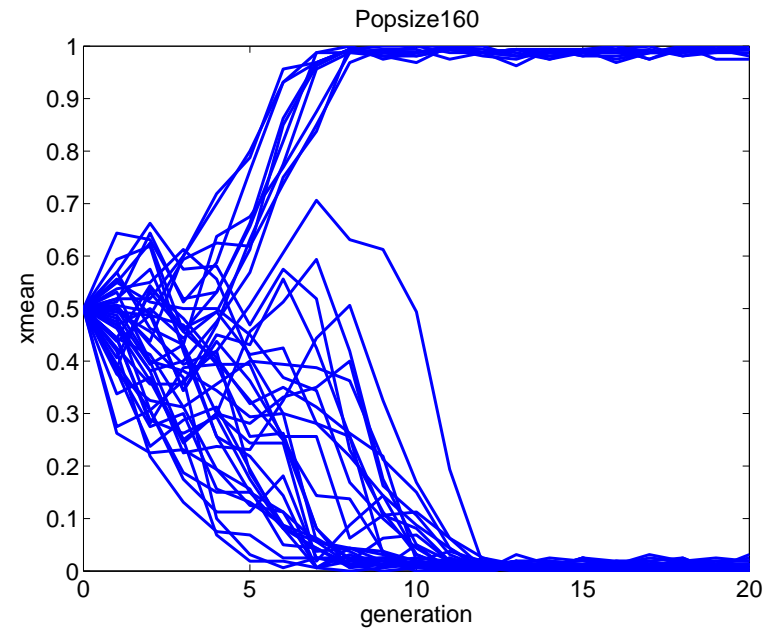
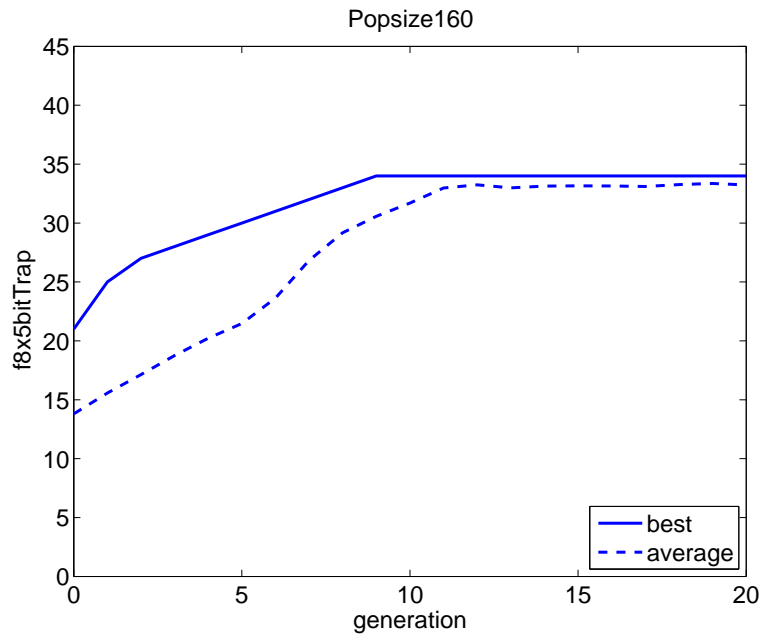
Introduction to  
Epistasis

- Black-box Optimization and Genetic Algorithms
- GA works well...
- **GA fails...**
- GA works again...
- Epistasis
- Discussion on semestral projects
- Linkage Identification Techniques

Perturbation  
Techniques of Linkage  
Identification

Optimization by  
Model Fitting

Summary



The  $f_2$  problem contains some interactions among variables, *GA is not aware of them* and works with the individual bits as if they were truly independent of each other.



# GA fails...

Problem  $f_2$ :

- defined over 40-bit strings
- the quality of the worst solution:  $f_2(x^{\text{worst}}) = 0$ .
- the quality of the best solution:  $f_2(x^{\text{opt}}) = 40$ .
- the best solution:  $x^{\text{opt}} = (1111 \dots 1)$ .

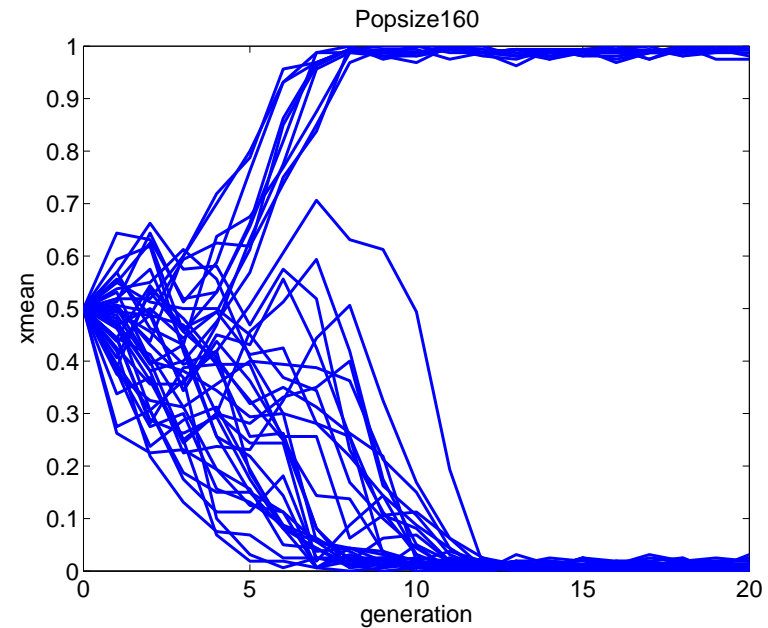
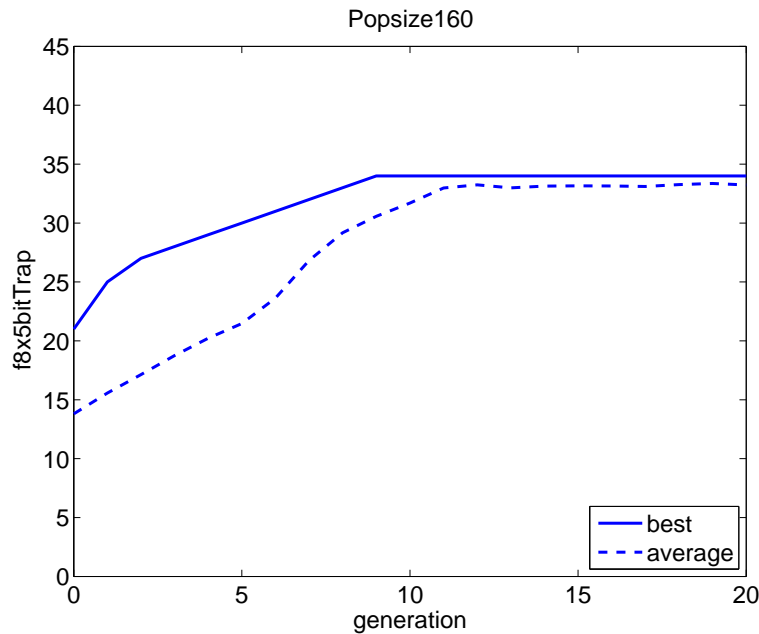
Introduction to Epistasis

- Black-box Optimization and Genetic Algorithms
- GA works well...
- **GA fails...**
- GA works again...
- Epistasis
- Discussion on semestral projects
- Linkage Identification Techniques

Perturbation Techniques of Linkage Identification

Optimization by Model Fitting

Summary



The  $f_2$  problem contains some interactions among variables, *GA is not aware of them* and works with the individual bits as if they were truly independent of each other.

None of the above mentioned problem characteristics is important to judge if the GA will work well!!!



## GA works again...

---

Still solving  $f_2$ :

- defined over 40-bit strings
- the quality of the worst solution:  $f_2(x^{\text{worst}}) = 0$ .
- the quality of the best solution:  $f_2(x^{\text{opt}}) = 40$ .
- the best solution:  $x^{\text{opt}} = (1111 \dots 1)$ .

Instead of the uniform crossover,

- let us allow the crossover only after each 5th bit.

---

Introduction to  
Epistasis

- Black-box Optimization and Genetic Algorithms
- GA works well...
- GA fails...
- **GA works again...**
- Epistasis
- Discussion on semestral projects
- Linkage Identification Techniques

---

Perturbation  
Techniques of Linkage  
Identification

---

Optimization by  
Model Fitting

---

Summary



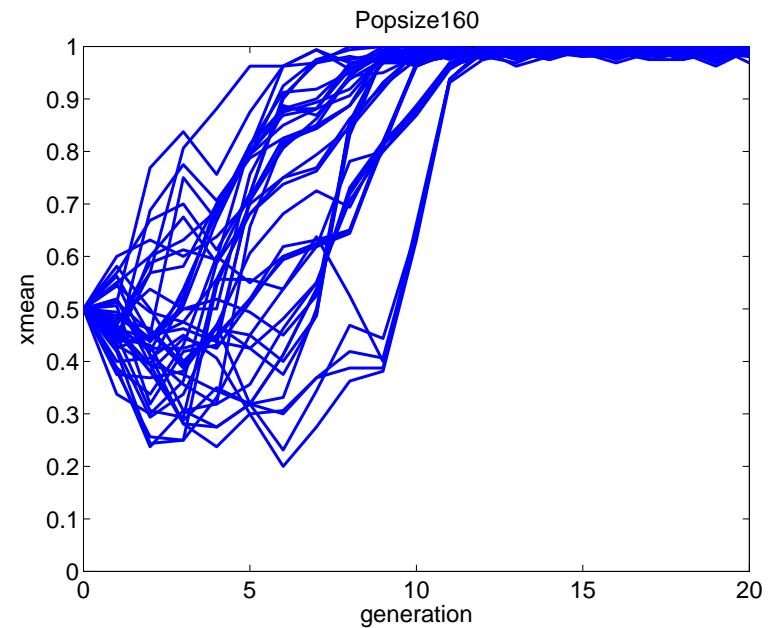
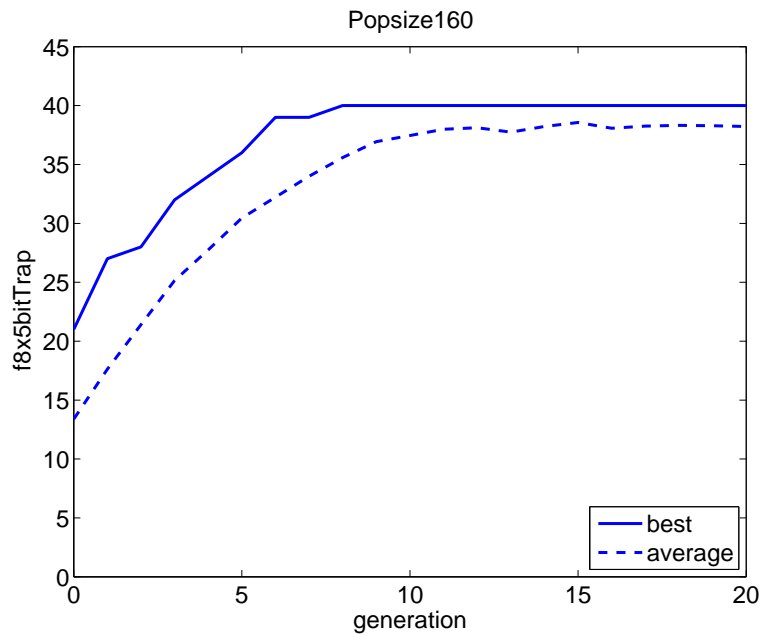
# GA works again...

Still solving  $f_2$ :

- defined over 40-bit strings
- the quality of the worst solution:  $f_2(x^{\text{worst}}) = 0$ .
- the quality of the best solution:  $f_2(x^{\text{opt}}) = 40$ .
- the best solution:  $x^{\text{opt}} = (1111 \dots 1)$ .

Instead of the uniform crossover,

- let us allow the crossover only after each 5th bit.



Introduction to Epistasis

- Black-box Optimization and Genetic Algorithms
- GA works well...
- GA fails...
- GA works again...
- Epistasis
- Discussion on semestral projects
- Linkage Identification Techniques
- Perturbation Techniques of Linkage Identification
- Optimization by Model Fitting
- Summary



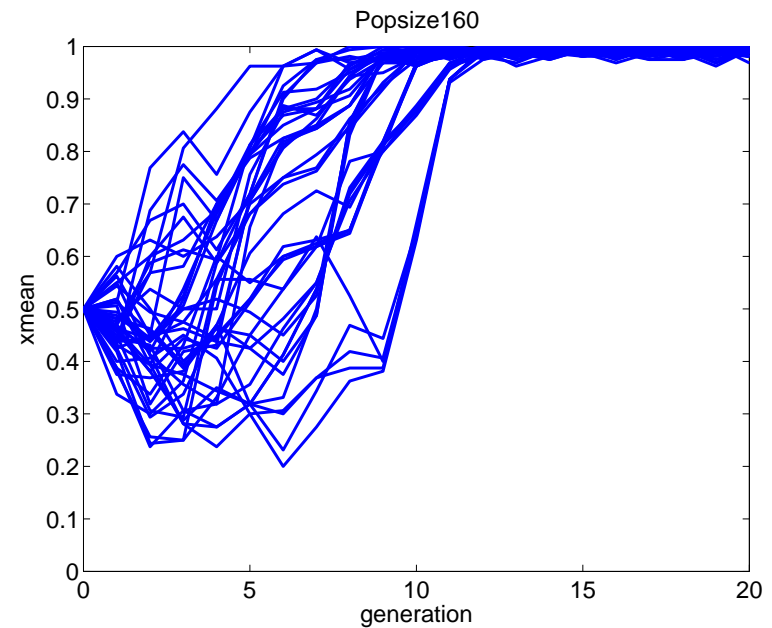
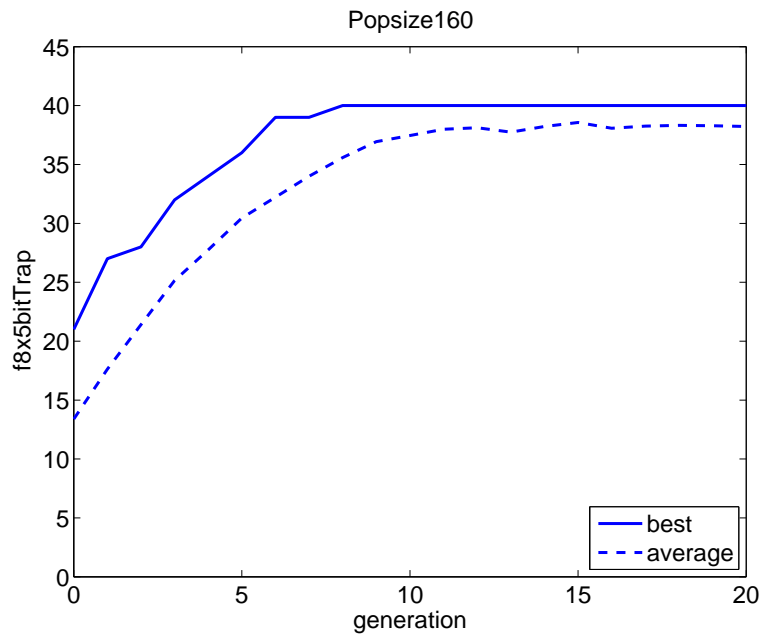
## GA works again...

Still solving  $f_2$ :

- defined over 40-bit strings
- the quality of the worst solution:  $f_2(x^{\text{worst}}) = 0$ .
- the quality of the best solution:  $f_2(x^{\text{opt}}) = 40$ .
- the best solution:  $x^{\text{opt}} = (1111 \dots 1)$ .

Instead of the uniform crossover,

- let us allow the crossover only after each 5th bit.



The  $f_2$  problem contains some interactions among variables and *GA knows about them*.



# Epistasis

---

## Epistasis:

- Effects of one gene are dependent on (influenced, conditioned by) other genes.

Introduction to  
Epistasis

---

- Black-box Optimization and Genetic Algorithms
- GA works well...
- GA fails...
- GA works again...
- **Epistasis**
- Discussion on semestral projects
- Linkage Identification Techniques

Perturbation  
Techniques of Linkage  
Identification

---

Optimization by  
Model Fitting

---

Summary

---



# Epistasis

---

## Epistasis:

- Effects of one gene are dependent on (influenced, conditioned by) other genes.

## Linkage:

- Tendency of certain loci or alleles to be inherited together.

Introduction to  
Epistasis

---

- Black-box Optimization and Genetic Algorithms
- GA works well...
- GA fails...
- GA works again...
- **Epistasis**
- Discussion on semestral projects
- Linkage Identification Techniques

Perturbation  
Techniques of Linkage  
Identification

---

Optimization by  
Model Fitting

---

Summary

---





# Epistasis

---

## Epistasis:

- Effects of one gene are dependent on (influenced, conditioned by) other genes.

## Linkage:

- Tendency of certain loci or alleles to be inherited together.

## Other names:

- dependencies
- interdependencies
- interactions

Introduction to  
Epistasis

---

- Black-box Optimization and Genetic Algorithms
- GA works well...
- GA fails...
- GA works again...
- **Epistasis**
- Discussion on semestral projects
- Linkage Identification Techniques

Perturbation  
Techniques of Linkage  
Identification

---

Optimization by  
Model Fitting

---

Summary

---



# Epistasis

---

## Epistasis:

- Effects of one gene are dependent on (influenced, conditioned by) other genes.

## Linkage:

- Tendency of certain loci or alleles to be inherited together.

## Other names:

- dependencies
- interdependencies
- interactions

When optimizing the following functions, which of the variables are linked together?

$$f = x_1 + x_2 + x_3 \quad (1)$$

$$f = 0.1x_1 + 0.7x_2 + 3x_3 \quad (2)$$

$$f = x_1x_2x_3 \quad (3)$$

$$f = x_1 + x_2^2 + \sqrt{x_3} \quad (4)$$

$$f = \sin(x_1) + \cos(x_2) + e^{x_3} \quad (5)$$

$$f = \sin(x_1 + x_2) + e^{x_3} \quad (6)$$

Introduction to  
Epistasis

---

- Black-box Optimization and Genetic Algorithms
- GA works well...
- GA fails...
- GA works again...
- **Epistasis**
- Discussion on semestral projects
- Linkage Identification Techniques

Perturbation  
Techniques of Linkage  
Identification

---

Optimization by  
Model Fitting

---

Summary

---



# Discussion on semestral projects

---

Which of the semestral projects contain interactions? Why?

- Japanese puzzle
- Circles in the square
- Image compression
- MTSP
- CD compilation
- Shortest common supersequence
- ATP rankings
- Binary opt. problem

Introduction to  
Epistasis

---

- Black-box Optimization and Genetic Algorithms
- GA works well...
- GA fails...
- GA works again...
- Epistasis
- [Discussion on semestral projects](#)
- Linkage Identification Techniques

Perturbation  
Techniques of Linkage  
Identification

---

Optimization by  
Model Fitting

---

Summary

---



# Discussion on semestral projects

---

Which of the semestral projects contain interactions? Why?

- Japanese puzzle
- Circles in the square
- Image compression
- MTSP
- CD compilation
- Shortest common supersequence
- ATP rankings
- Binary opt. problem

Notes:

- Almost all real-world problems contain interactions among design variables.

---

Introduction to  
Epistasis

- Black-box Optimization and Genetic Algorithms
- GA works well...
- GA fails...
- GA works again...
- Epistasis
- [Discussion on semestral projects](#)
- Linkage Identification Techniques

---

Perturbation  
Techniques of Linkage  
Identification

---

Optimization by  
Model Fitting

---

Summary



# Discussion on semestral projects

---

Which of the semestral projects contain interactions? Why?

- Japanese puzzle
- Circles in the square
- Image compression
- MTSP
- CD compilation
- Shortest common supersequence
- ATP rankings
- Binary opt. problem

Notes:

- Almost all real-world problems contain interactions among design variables.
- The “amount” and “type” of interactions depend on the representation and the objective function.

---

Introduction to  
Epistasis

- Black-box Optimization and Genetic Algorithms
- GA works well...
- GA fails...
- GA works again...
- Epistasis
- [Discussion on semestral projects](#)
- Linkage Identification Techniques

---

Perturbation  
Techniques of Linkage  
Identification

---

Optimization by  
Model Fitting

---

Summary



# Discussion on semestral projects

---

Which of the semestral projects contain interactions? Why?

- Japanese puzzle
- Circles in the square
- Image compression
- MTSP
- CD compilation
- Shortest common supersequence
- ATP rankings
- Binary opt. problem

Notes:

- Almost all real-world problems contain interactions among design variables.
- The “amount” and “type” of interactions depend on the representation and the objective function.
- Sometimes, by a clever choice of the representation and the objective function, we can get rid of the interactions.

---

Introduction to  
Epistasis

- Black-box Optimization and Genetic Algorithms
- GA works well...
- GA fails...
- GA works again...
- Epistasis
- [Discussion on semestral projects](#)
- Linkage Identification Techniques

---

Perturbation  
Techniques of Linkage  
Identification

---

Optimization by  
Model Fitting

---

Summary



# Linkage Identification Techniques

---

Problems:

- How to detect dependencies among variables?

Introduction to  
Epistasis

---

- Black-box Optimization and Genetic Algorithms
- GA works well...
- GA fails...
- GA works again...
- Epistasis
- Discussion on semestral projects
- **Linkage Identification Techniques**

Perturbation  
Techniques of Linkage  
Identification

---

Optimization by  
Model Fitting

---

Summary

---



# Linkage Identification Techniques

---

Problems:

- How to detect dependencies among variables?
- How to use them?

Introduction to  
Epistasis

---

- Black-box Optimization and Genetic Algorithms
- GA works well...
- GA fails...
- GA works again...
- Epistasis
- Discussion on semestral projects
- **Linkage Identification Techniques**

Perturbation  
Techniques of Linkage  
Identification

---

Optimization by  
Model Fitting

---

Summary

---





# Linkage Identification Techniques

---

Problems:

- How to detect dependencies among variables?
- How to use them?

Techniques used for linkage identification:

1. Indirect detection along genetic search (messy GAs)
2. Direct detection of fitness changes by perturbation
3. Model-based approach: classification
4. Model-based approach: distribution estimation (EDAs)

Introduction to  
Epistasis

---

- Black-box Optimization and Genetic Algorithms
- GA works well...
- GA fails...
- GA works again...
- Epistasis
- Discussion on semestral projects

- [Linkage Identification Techniques](#)

Perturbation  
Techniques of Linkage  
Identification

---

Optimization by  
Model Fitting

---

Summary

---



# Perturbation Techniques of Linkage Identification

# Linkage identification by non-linearity check (LINC)

## LINC

- Developed by Munetomo [MG98], based on gene expression messy GA [Kar95]

## Linearity and nonlinearity

- consider a bitstring  $\mathbf{x} = (x_1, x_2, \dots, x_D)$
- perturb loci  $i, j$ , and both  $i$  and  $j$

---

$\mathbf{x} = (x_1, \dots, x_i, \dots, x_j, \dots, x_D)$	
$\mathbf{x}_i = (x_1, \dots, \bar{x}_i, \dots, x_j, \dots, x_D)$	$\Delta f_i = f(\mathbf{x}_i) - f(\mathbf{x})$
$\mathbf{x}_j = (x_1, \dots, x_i, \dots, \bar{x}_j, \dots, x_D)$	$\Delta f_j = f(\mathbf{x}_j) - f(\mathbf{x})$
$\mathbf{x}_{ij} = (x_1, \dots, \bar{x}_i, \dots, \bar{x}_j, \dots, x_D)$	$\Delta f_{ij} = f(\mathbf{x}_{ij}) - f(\mathbf{x})$

---

If  $\Delta f_{ij} = \Delta f_i + \Delta f_j$ ,

- fitness is linear, interaction did not show up,
- $x_i$  and  $x_j$  needn't be part of the same BB.

If  $\Delta f_{ij} \neq \Delta f_i + \Delta f_j$ ,

- fitness is nonlinear, interaction exists,
- $x_i$  and  $x_j$  are members of the same BB,
- add  $i$  to  $j$ 's linkage set and  $j$  to  $i$ 's linkage set.



# LINC: Example

3-bit Trap Function:

$u(\mathbf{x})$	0	1	2	3
$f(\mathbf{x})$	0.6	0.3	0	1

- Let us consider string  $\mathbf{x} = (010)$  and bits 1 and 2:

$\mathbf{x} = (010)$				
$\mathbf{x}_1 = (110)$	$\Delta f_1$	$= f(110) - f(010)$	$= 0 - 0.3$	$= -0.3$
$\mathbf{x}_2 = (000)$	$\Delta f_2$	$= f(000) - f(010)$	$= 0.6 - 0.3$	$= 0.3$
$\mathbf{x}_{12} = (100)$	$\Delta f_{12}$	$= f(100) - f(010)$	$= 0.3 - 0.3$	$= 0$

$\Delta f_{12} = \Delta f_1 + \Delta f_2 \rightarrow i$  and  $j$  needn't be part of the same BB

- The same string  $\mathbf{x} = (010)$  and bits 1 and 3:

$\mathbf{x} = (010)$				
$\mathbf{x}_1 = (110)$	$\Delta f_1$	$= f(110) - f(010)$	$= 0 - 0.3$	$= -0.3$
$\mathbf{x}_3 = (011)$	$\Delta f_3$	$= f(011) - f(010)$	$= 0 - 0.3$	$= -0.3$
$\mathbf{x}_{13} = (111)$	$\Delta f_{13}$	$= f(111) - f(010)$	$= 1 - 0.3$	$= 0.7$

$\Delta f_{13} \neq \Delta f_1 + \Delta f_3 \rightarrow i$  and  $j$  are part of the same BB

Analysis of the string 010 suggests linkage between 1st and 3rd bit only. Additional string (e.g. 011) would suggest that all three bits are linked together.

Introduction to Epistasis

Perturbation Techniques of Linkage Identification

- Linkage identification by non-linearity check (LINC)
- LINC: Example**
- Linkage identification by non-monotonicity detection (LIMD)
- Tightness detection

Optimization by Model Fitting

Summary



# Linkage identification by non-monotonicity detection (LIMD)

---

LIMD:

- Developed by Munetomo [MG99a, MG99b]
- Not all nonlinearities detected by LINC are bad for GAs (or hill-climber)
- Consider 4 bitstrings (as in case of LINC):  $x$ ,  $x_i$ ,  $x_j$ , and  $x_{ij}$
- Reorder them so that  $x = \arg \min(f(x), f(x_i), f(x_j), f(x_{ij}))$
- Monotonicity constraints:
  - $f(x) < f(x_i) < f(x_{ij})$
  - $f(x) < f(x_j) < f(x_{ij})$
- If monotonicity is violated, add  $i$  to  $j$ 's linkage set and  $j$  to  $i$ 's linkage set.

Introduction to  
Epistasis

---

Perturbation  
Techniques of Linkage  
Identification

---

- Linkage identification by non-linearity check (LINC)
- LINC: Example
- Linkage identification by non-monotonicity detection (LIMD)
- Tightness detection

Optimization by  
Model Fitting

---

Summary

---

[MG99a] Masaharu Munetomo and David E. Goldberg. Identifying linkage groups by nonlinearity/non-monotonicity detection. In *Proceedings of the 1999 Genetic and Evolutionary Computation Conference*, pages 433–440, 1999.

[MG99b] Masaharu Munetomo and David E. Goldberg. Linkage identification by non-monotonicity detection for overlapping functions. *Evolutionary Computation*, 7:377–398, December 1999.



# Tightness detection

---

For each pair of variables, we know if the two variables are linked. So what?

Introduction to  
Epistasis

---

Perturbation  
Techniques of Linkage  
Identification

---

- Linkage identification by non-linearity check (LINC)
- LINC: Example
- Linkage identification by non-monotonicity detection (LIMD)
- **Tightness detection**

Optimization by  
Model Fitting

---

Summary

---



# Tightness detection

---

For each pair of variables, we know if the two variables are linked. So what?

- Construct linkage groups (decompose the problem)
- Use modified crossover: always transfer the bits in the linkage group together
- Use modified mutation: allow mutations of the whole linkage group

Introduction to  
Epistasis

---

Perturbation  
Techniques of Linkage  
Identification

---

- Linkage identification by non-linearity check (LINC)
- LINC: Example
- Linkage identification by non-monotonicity detection (LIMD)
- **Tightness detection**

Optimization by  
Model Fitting

---

Summary

---



# Tightness detection

---

For each pair of variables, we know if the two variables are linked. So what?

- Construct linkage groups (decompose the problem)
- Use modified crossover: always transfer the bits in the linkage group together
- Use modified mutation: allow mutations of the whole linkage group

What if the problem cannot be decomposed sufficiently?

- No clearly separated groups of bits
- Solution: **tightness detection**

Introduction to  
Epistasis

---

Perturbation  
Techniques of Linkage  
Identification

---

- Linkage identification by non-linearity check (LINC)
- LINC: Example
- Linkage identification by non-monotonicity detection (LIMD)
- **Tightness detection**

Optimization by  
Model Fitting

---

Summary

---





# Tightness detection

---

For each pair of variables, we know if the two variables are linked. So what?

- Construct linkage groups (decompose the problem)
- Use modified crossover: always transfer the bits in the linkage group together
- Use modified mutation: allow mutations of the whole linkage group

What if the problem cannot be decomposed sufficiently?

- No clearly separated groups of bits
- Solution: **tightness detection**

Algorithm:

1. Given: linkage groups from LIMD (or LINC) procedure
2. Tightness definition:

$$tightness(i, j) = \frac{n(i \wedge j)}{n(i \vee j)} \in \langle 0, 1 \rangle,$$

where

$n(i \wedge j)$  is the number of linkage groups that contain both  $i$  and  $j$ , and  
 $n(i \vee j)$  is the number of linkage groups that contain  $i$  or  $j$ .

3. If  $tightness(i, j) < \delta$ , remove locus  $j$  from linkage set of locus  $i$  and vice versa.

Introduction to  
Epistasis

---

Perturbation  
Techniques of Linkage  
Identification

---

- Linkage identification by non-linearity check (LINC)
- LINC: Example
- Linkage identification by non-monotonicity detection (LIMD)
- **Tightness detection**

Optimization by  
Model Fitting

---

Summary

---



# Optimization by Model Fitting



# Modeling the Interactions

---

What kind of “models” should we use?

- The perturbation techniques
  - extract *global information* from the population, and
  - use modified recombination operators that use the learned information, i.e. they used modified sampling process.

Introduction to  
Epistasis

---

Perturbation  
Techniques of Linkage  
Identification

---

Optimization by  
Model Fitting

---

- Modeling the Interactions
- Optimization by Model Fitting: The Algorithm
- Descriptive vs. Generative Models
- Learnable Evolution Model (LEM)

Summary

---



# Modeling the Interactions

---

What kind of “models” should we use?

- The perturbation techniques
  - extract *global information* from the population, and
  - use modified recombination operators that use the learned information, i.e. they used modified sampling process.
- Classification techniques can be used to
  - build a model distinguishing the “good” individuals from the “bad” individuals, and
  - sample offspring from the “good” areas (more often than from the “bad” ones).

---

Introduction to  
Epistasis

---

Perturbation  
Techniques of Linkage  
Identification

---

Optimization by  
Model Fitting

- **Modeling the Interactions**
- Optimization by Model Fitting: The Algorithm
- Descriptive vs. Generative Models
- Learnable Evolution Model (LEM)

---

Summary



# Modeling the Interactions

---

What kind of “models” should we use?

- The perturbation techniques
  - extract *global information* from the population, and
  - use modified recombination operators that use the learned information, i.e. they used modified sampling process.
- Classification techniques can be used to
  - build a model distinguishing the “good” individuals from the “bad” individuals, and
  - sample offspring from the “good” areas (more often than from the “bad” ones).
- Probability distribution models can be used to
  - build a model describing the distribution of “good” individuals, and
  - sample offspring from that model.

---

Introduction to  
Epistasis

---

Perturbation  
Techniques of Linkage  
Identification

---

Optimization by  
Model Fitting

- **Modeling the Interactions**
- Optimization by Model Fitting: The Algorithm
- Descriptive vs. Generative Models
- Learnable Evolution Model (LEM)

---

Summary



# Optimization by Model Fitting: The Algorithm

---

## Algorithm 1: General Evolutionary Scheme

---

```
1 begin
2    $\mathcal{M}^{(0)} \leftarrow \text{InitializeModel}()$ 
3    $X^{(0)} \leftarrow \text{Sample}(\mathcal{M}^{(0)})$ 
4    $f^{(0)} \leftarrow \text{Evaluate}(X^{(0)})$ 
5    $g \leftarrow 1$ 
6   while not TerminationCondition() do
7      $\{S, D\} \leftarrow \text{Select}(X^{(g-1)}, f^{(g-1)})$ 
8      $\mathcal{M}^{(g)} \leftarrow \text{Update}(g, \mathcal{M}^{(g-1)}, X^{(g-1)}, f^{(g-1)}, S, D)$ 
9      $X_{\text{Offs}} \leftarrow \text{Sample}(\mathcal{M}^{(g)})$ 
10     $f_{\text{Offs}} \leftarrow \text{Evaluate}(X_{\text{Offs}})$ 
11     $\{X^{(g)}, f^{(g)}\} \leftarrow \text{Replace}(X^{(g-1)}, X_{\text{Offs}}, f^{(g-1)}, f_{\text{Offs}})$ 
12     $g \leftarrow g + 1$ 
```

---

Introduction to  
Epistasis

---

Perturbation  
Techniques of Linkage  
Identification

---

Optimization by  
Model Fitting

---

- Modeling the Interactions
- Optimization by Model Fitting: The Algorithm
- Descriptive vs. Generative Models
- Learnable Evolution Model (LEM)

Summary

---



# Descriptive vs. Generative Models

---

Many models are *descriptive* in the sense that

Introduction to  
Epistasis

---

Perturbation  
Techniques of Linkage  
Identification

---

Optimization by  
Model Fitting

---

- Modeling the Interactions
- Optimization by Model Fitting: The Algorithm
- **Descriptive vs. Generative Models**
- Learnable Evolution Model (LEM)

Summary

---



# Descriptive vs. Generative Models

---

Many models are *descriptive* in the sense that

- given a point, they are able to
  - classify it to the “good” or “bad” class, or

Introduction to  
Epistasis

---

Perturbation  
Techniques of Linkage  
Identification

---

Optimization by  
Model Fitting

---

- Modeling the Interactions
- Optimization by Model Fitting: The Algorithm
- **Descriptive vs. Generative Models**
- Learnable Evolution Model (LEM)

Summary

---





# Descriptive vs. Generative Models

---

Many models are *descriptive* in the sense that

- given a point, they are able to
  - classify it to the “good” or “bad” class, or
  - evaluate its probability of being a “good” individual,

Introduction to  
Epistasis

---

Perturbation  
Techniques of Linkage  
Identification

---

Optimization by  
Model Fitting

---

- Modeling the Interactions
- Optimization by Model Fitting: The Algorithm
- **Descriptive vs. Generative Models**
- Learnable Evolution Model (LEM)

Summary

---



# Descriptive vs. Generative Models

---

Many models are *descriptive* in the sense that

- given a point, they are able to
  - classify it to the “good” or “bad” class, or
  - evaluate its probability of being a “good” individual,
- but they are *not able to generate* a “good” point directly.

---

Introduction to  
Epistasis

---

Perturbation  
Techniques of Linkage  
Identification

---

Optimization by  
Model Fitting

- Modeling the Interactions
- Optimization by Model Fitting: The Algorithm
- **Descriptive vs. Generative Models**
- Learnable Evolution Model (LEM)

---

Summary



# Descriptive vs. Generative Models

---

Many models are *descriptive* in the sense that

- given a point, they are able to
  - classify it to the “good” or “bad” class, or
  - evaluate its probability of being a “good” individual,
- but they are *not able to generate* a “good” point directly.
- *Generative* models can be used as data generators.

How to turn a descriptive model into generative?

Introduction to  
Epistasis

---

Perturbation  
Techniques of Linkage  
Identification

---

Optimization by  
Model Fitting

---

- Modeling the Interactions
- Optimization by Model Fitting: The Algorithm
- **Descriptive vs. Generative Models**
- Learnable Evolution Model (LEM)

Summary

---



# Descriptive vs. Generative Models

---

Many models are *descriptive* in the sense that

- given a point, they are able to
  - classify it to the “good” or “bad” class, or
  - evaluate its probability of being a “good” individual,
- but they are *not able to generate* a “good” point directly.
- *Generative* models can be used as data generators.

How to turn a descriptive model into generative?

- Use (weighted) rejection sampling (see [Luk09, algorithms 115 and 117])

---

Introduction to  
Epistasis

---

Perturbation  
Techniques of Linkage  
Identification

---

Optimization by  
Model Fitting

- Modeling the Interactions
- Optimization by Model Fitting: The Algorithm
- **Descriptive vs. Generative Models**
- Learnable Evolution Model (LEM)

---

Summary



# Descriptive vs. Generative Models

---

Many models are *descriptive* in the sense that

- given a point, they are able to
  - classify it to the “good” or “bad” class, or
  - evaluate its probability of being a “good” individual,
- but they are *not able to generate* a “good” point directly.
- *Generative* models can be used as data generators.

How to turn a descriptive model into generative?

- Use (weighted) rejection sampling (see [Luk09, algorithms 115 and 117])

Problems with rejection sampling?

---

Introduction to  
Epistasis

---

Perturbation  
Techniques of Linkage  
Identification

---

Optimization by  
Model Fitting

- Modeling the Interactions
- Optimization by Model Fitting: The Algorithm
- **Descriptive vs. Generative Models**
- Learnable Evolution Model (LEM)

---

Summary



# Descriptive vs. Generative Models

---

Many models are *descriptive* in the sense that

- given a point, they are able to
  - classify it to the “good” or “bad” class, or
  - evaluate its probability of being a “good” individual,
- but they are *not able to generate* a “good” point directly.
- *Generative* models can be used as data generators.

How to turn a descriptive model into generative?

- Use (weighted) rejection sampling (see [Luk09, algorithms 115 and 117])

Problems with rejection sampling?

- In later stages of evolution, the acceptance region becomes very small.
- It becomes increasingly difficult to hit that region.

---

Introduction to  
Epistasis

---

Perturbation  
Techniques of Linkage  
Identification

---

Optimization by  
Model Fitting

- Modeling the Interactions
- Optimization by Model Fitting: The Algorithm
- **Descriptive vs. Generative Models**
- Learnable Evolution Model (LEM)

---

Summary

[Luk09] Sean Luke. *Essentials of Metaheuristics*. 2009. available at <http://cs.gmu.edu/~sean/book/metaheuristics/>.



# Learnable Evolution Model (LEM)

---

LEM: Evolutionary process guided by machine learning

- created by Ryszard Michalski [Mic00]
- originally, alternates between 2 phases:
  - machine learning mode
  - Darwinian evolution mode
- uses AQ decision rules as the classification model

Introduction to  
Epistasis

---

Perturbation  
Techniques of Linkage  
Identification

---

Optimization by  
Model Fitting

---

- Modeling the Interactions
- Optimization by Model Fitting: The Algorithm
- Descriptive vs. Generative Models
- **Learnable Evolution Model (LEM)**

Summary

---



# Learnable Evolution Model (LEM)

---

LEM: Evolutionary process guided by machine learning

- created by Ryszard Michalski [Mic00]
- originally, alternates between 2 phases:
  - machine learning mode
  - Darwinian evolution mode
- uses AQ decision rules as the classification model

LEM3: the most recent implementation of the LEM approach

- implemented by Janusz Wojtusiak [WM06, Woj07]
- alternates between more phases including local search, randomization, and representation adjustment
- good results reported, especially in the initial phases of the search

- [Mic00] Ryszard S. Michalski. Learnable evolution model: Evolutionary processes guided by machine learning. *Machine Learning*, 38:9–40, 2000.
- [WM06] Janusz Wojtusiak and Ryszard S. Michalski. The LEM3 system for non-darwinian evolutionary computation and its application to complex function optimization. Reports of the Machine Learning and Inference Laboratory MLI 04-1, George Mason University, Fairfax, VA, February 2006.
- [Woj07] Janusz Wojtusiak. *Handling Constrained Optimization Problems and Using Constructive Induction to Improve Representation Spaces in Learnable Evolution Model*. Reports of the machine learning and inference laboratory, Fairfax, VA, November 2007.

Introduction to  
Epistasis

---

Perturbation  
Techniques of Linkage  
Identification

---

Optimization by  
Model Fitting

---

- Modeling the Interactions
- Optimization by Model Fitting: The Algorithm
- Descriptive vs. Generative Models
- **Learnable Evolution Model (LEM)**

Summary

---





## Summary



# Summary

---

- GAs are not very good for problems containing epistatic interactions among design variables

Introduction to  
Epistasis

---

Perturbation  
Techniques of Linkage  
Identification

---

Optimization by  
Model Fitting

---

Summary

---

- Summary



# Summary

---

- GAs are not very good for problems containing epistatic interactions among design variables
  - because they assume all variables independent of each other

Introduction to  
Epistasis

---

Perturbation  
Techniques of Linkage  
Identification

---

Optimization by  
Model Fitting

---

Summary

---

- Summary



# Summary

---

- GAs are not very good for problems containing epistatic interactions among design variables
  - because they assume all variables independent of each other
- There are methods that identify interactions and create the right linkage
  - Perturbation techniques are the most straightforward
  - Optimization by model fitting is a general approach

Introduction to  
Epistasis

---

Perturbation  
Techniques of Linkage  
Identification

---

Optimization by  
Model Fitting

---

Summary

---

- Summary



# Summary

---

- GAs are not very good for problems containing epistatic interactions among design variables
  - because they assume all variables independent of each other
- There are methods that identify interactions and create the right linkage
  - Perturbation techniques are the most straightforward
  - Optimization by model fitting is a general approach
- Using classification models is not so common
  - LEM is a prominent example
  - another example for the real-valued spaces using elliptic classifiers will be given later in the course

Introduction to  
Epistasis

---

Perturbation  
Techniques of Linkage  
Identification

---

Optimization by  
Model Fitting

---

Summary

---

- Summary



# Summary

---

- GAs are not very good for problems containing epistatic interactions among design variables
  - because they assume all variables independent of each other
- There are methods that identify interactions and create the right linkage
  - Perturbation techniques are the most straightforward
  - Optimization by model fitting is a general approach
- Using classification models is not so common
  - LEM is a prominent example
  - another example for the real-valued spaces using elliptic classifiers will be given later in the course
- Using probabilistic models of the distribution of promising individuals is very popular:
  - The class of estimation-of-distribution (EDA) algorithms
  - EDAs are covered in the next 2 lectures

---

Introduction to  
Epistasis

---

Perturbation  
Techniques of Linkage  
Identification

---

Optimization by  
Model Fitting

---

Summary

- Summary