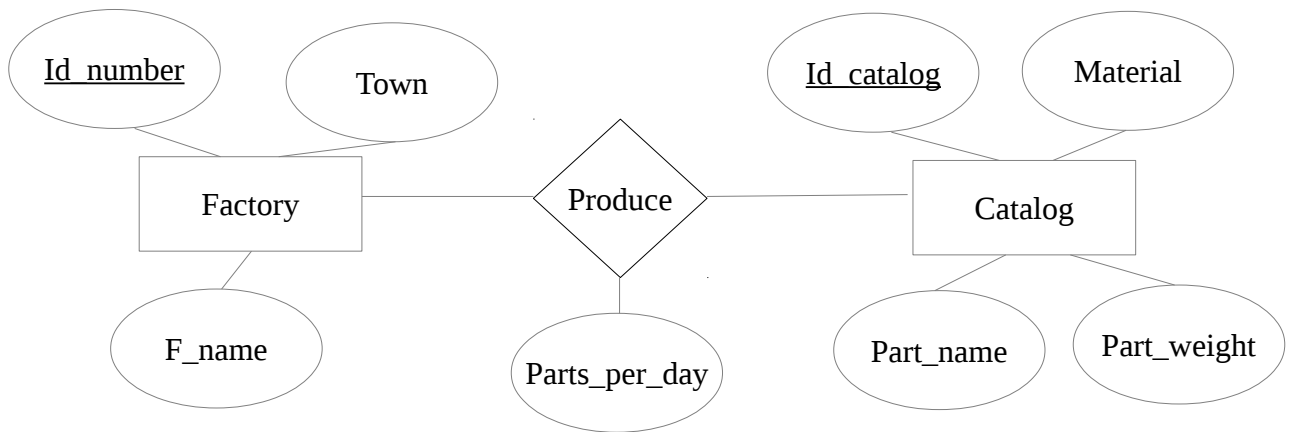


1. The database is represented by its E-R model:



- Write relation schema of this database (1 point)
- Write SQL query, that will print names of all products from catalog (Part\_name) that are made from Steel (Material) and are produced in factory from Town Praha (2 point)
- Rewrite query from b) into relation algebra (1 points)
- Write SQL query that will print names of all products from catalog (Part\_name) that are that are produced in total weight (sum of parts\_per\_day \* Part\_weight from all factories in database) bigger than 1000 kg. (3 points)