

Elastografie

Jan Kybic, J.Ophir¹, ...

2008–2013

¹http://www.uth.tmc.edu/schools/med/rad/elasto/slides/mainslideshow/main_slide_show.pps

Elastography: Imaging of Tissue Elastic Properties *In-Vitro* and *In-Vivo*

J. Ophir, B. Garra*, F. Kallel,
E.E. Konofagou, R. Righetti** and T. Varghese


The University of Texas Medical School, Houston, TX

*The University of Vermont Medical Center, Burlington, VT

**The University of Florence, Italy

Supported by National Cancer Institute (NCI)
Program Project Grant P01-CA 64597

Elastography

- **Definition** 
- Motivation
- Basic principles
- Early experiments and images
- Contemporary results
- Future directions


Definition

Elastography:

An imaging technique whereby local axial tissue strains are estimated from differential ultrasonic speckle displacements. These displacements are generated by a weak, quasi-static stress field.

The resultant strain image is called an **Elastogram.**


Elastography

- Definition
- **Motivation** 
- Basic principles
- Early experiments and images
- Contemporary results
- Future directions

Motivation

- *Most pathological changes are associated with changes in tissue stiffness.
- *Palpation is an effective method for lesion detection and evaluation.
- *Many cancers (breast, prostate) are iso-echoic, and hence difficult to detect by ultrasound.

Elastography

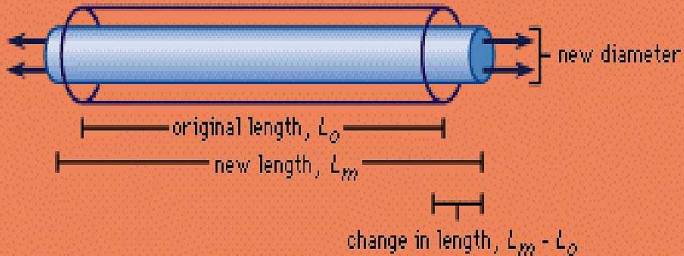
- Definition
- Motivation
- **Basic data and principles** ← 
- Early experiments and images
- Contemporary results
- Future directions



Basic data on breast tissues

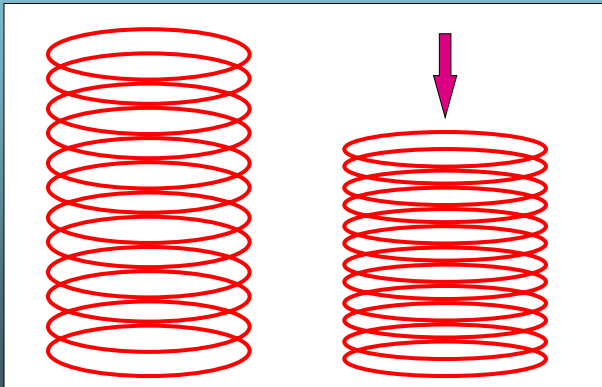
Tissue Type	Tissue Stiffness (kPa)					
	5% precompression			20% precompression		
	Strain rate			Strain rate		
	1%/dsec	10%/dsec	40%/dsec	2%/dsec	20%/dsec	80%/dsec
Normal fat (n=40)	18 ± 7	19 ± 7	22 ± 9	20 ± 8	20 ± 6	23 ± 5
Normal glandular (n=31)	28 ± 14	33 ± 11	35 ± 14	48 ± 15	57 ± 19	66 ± 17
Fibrous (n=21)	97 ± 33	107 ± 32	118 ± 83	220 ± 88	233 ± 59	245 ± 83
Ductal tumor (n=23)	22 ± 8	25 ± 4	26 ± 5	291 ± 67	301 ± 58	307 ± 78
Infiltr. ductal tumor (n=32)	106 ± 32	93 ± 33	112 ± 43	558 ± 180	490 ± 112	460 ± 178

Basic Principles: Normal strain



$$\text{normal strain} = \frac{\text{change in length}}{\text{original length}} = \frac{L_m - L_0}{L_0}$$

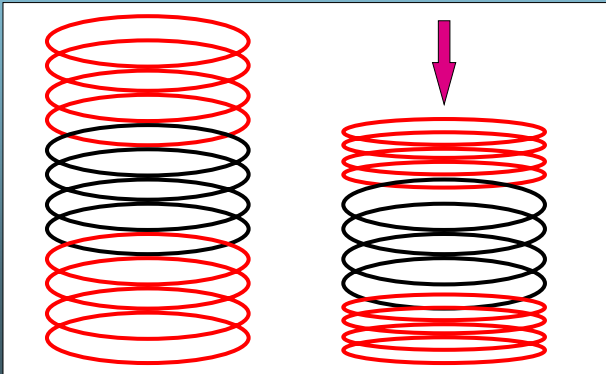
One Dimensional Uniform Spring System



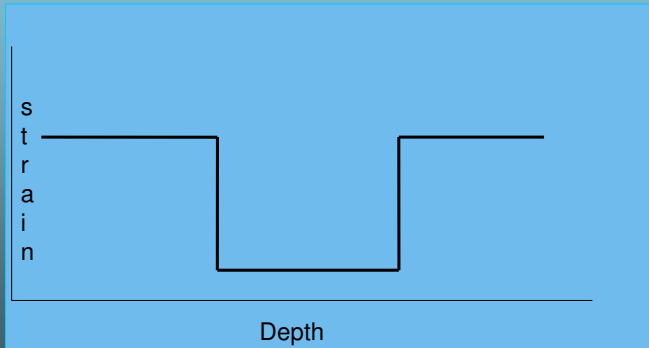
Strain Profile in Uniform Spring



One Dimensional Non-Uniform Spring System

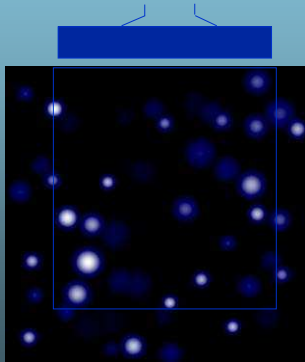


Strain Profile in Non-uniform Spring

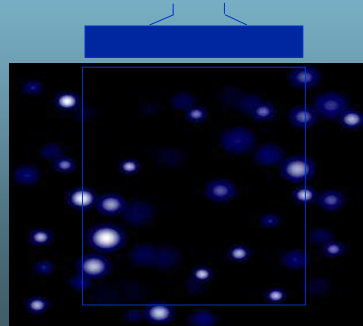


Basic Principles: Tissue Compression Model

Two-dimensional representation/ perfect-slip conditions

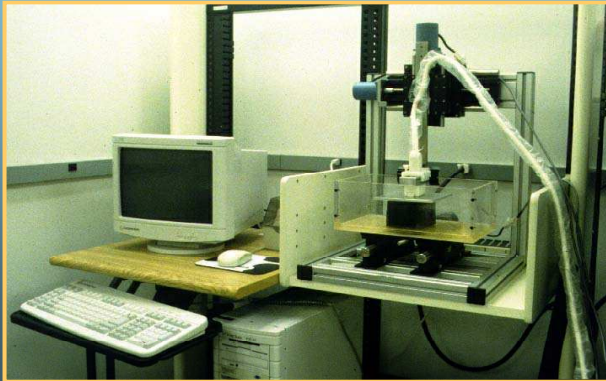


5/98 *Before compression*



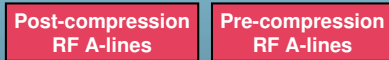
After compression

Elastography data acquisition system



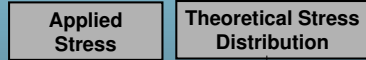
Basic Principles: The Elastography Process

ESTIMATION OF STRAIN



Local Cross Correlation Analysis

ESTIMATION OF STRESS



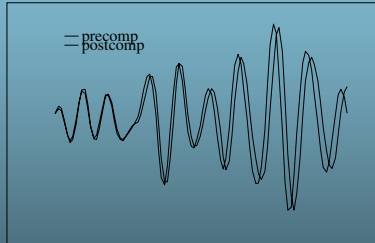
Absolute Axial Stress Estimation

$$Y_{local} = \left(\frac{\text{Stress}}{\text{Strain}} \right)_{local}$$

ELASTOGRAM



RF signal compression: 2% applied strain

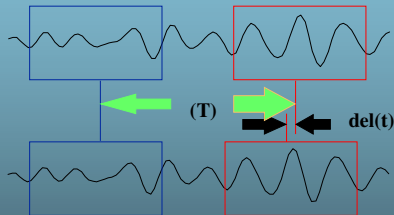


Notice that a small compression (strain) of the tissue results in a small compression of the signal (similar to frequency modulation)



Basic Principles: Estimation of Strain

Pre-compression RF line



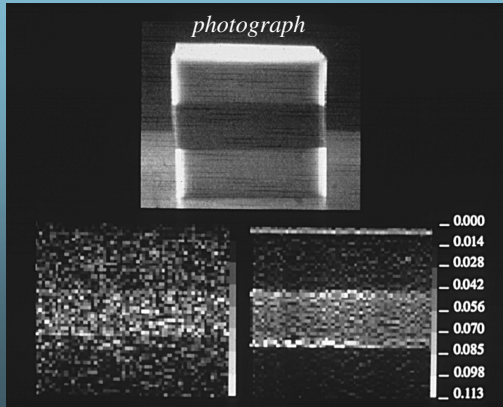
Post-compression RF line

$$\text{Strain} = \text{del}(t) / (T)$$

Elastography

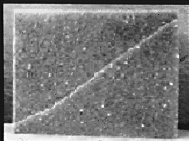
- Definition
- Motivation
- Basic principles
- Early experiments and images 
- Contemporary results
- Future directions

Layered foam phantom (*ca.1991*)

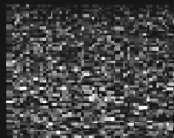


Sponge w/ diagonal cut (ca. 1991)

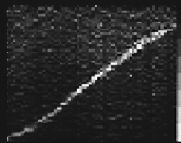
photograph



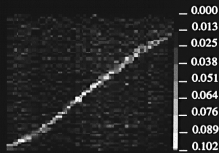
sonogram



elastogram I



elastogram II

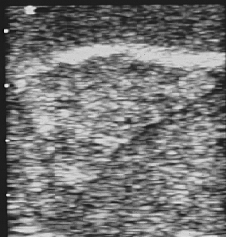


Breast carcinoma *in vitro* (ca. 1992)

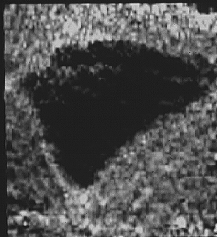
sonogram

elastogram

1 cm

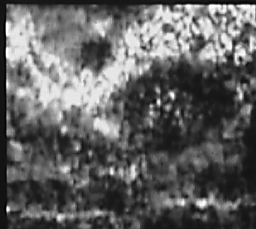


(S)




(E)

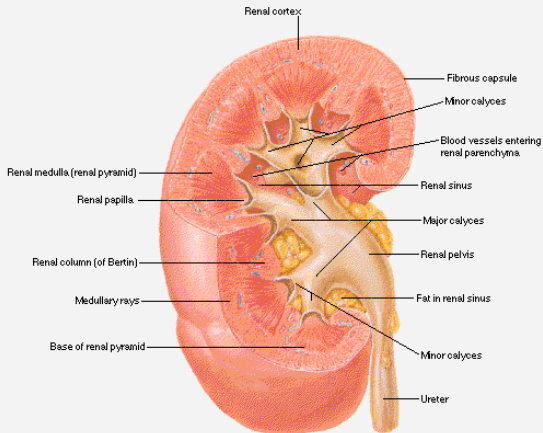
Breast Carcinoma *in-vivo* (ca. 1993)



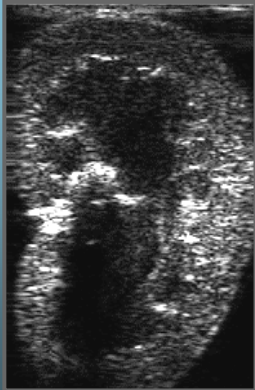
Elastography

- Definition
- Motivation
- Basic principles
- Early experiments and images
- Contemporary results 
- Future directions

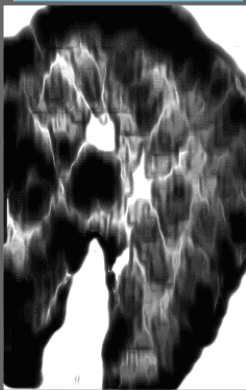
Right Kidney Sectioned in Several Planes



Elastogram from an ovine kidney



Sonogram



Elastogram

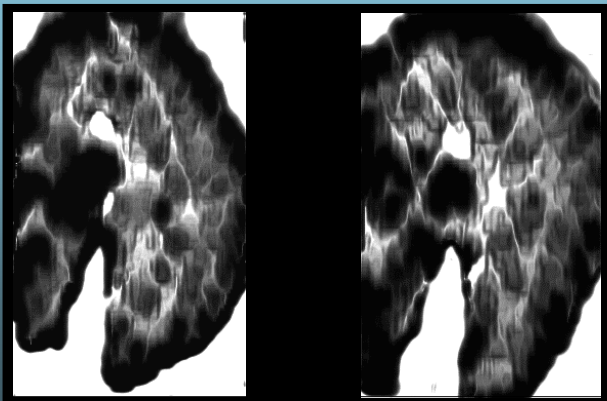


Photograph



Ovine Kidneys *in-vitro* (1997)

Two longitudinal elastographic views at 5 MHz

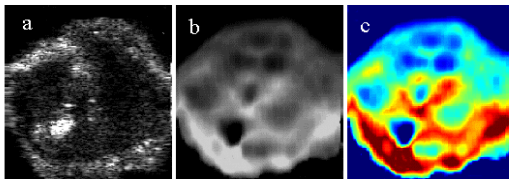




IEEE TRANSACTIONS ON

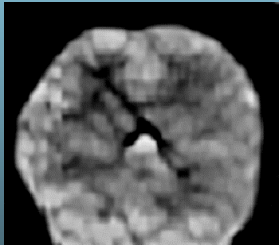


ULTRASONICS, FERROELECTRICS, AND FREQUENCY CONTROL

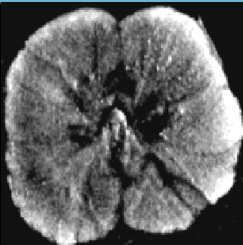


July 1998 Volume 45 Number 4 ITUCER (ISSN 0885-3010)

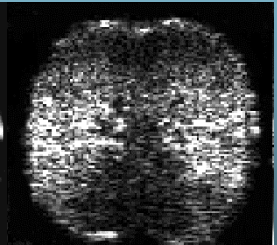
Canine prostate *in-vitro* (1998)
Transverse slice



Elastogram

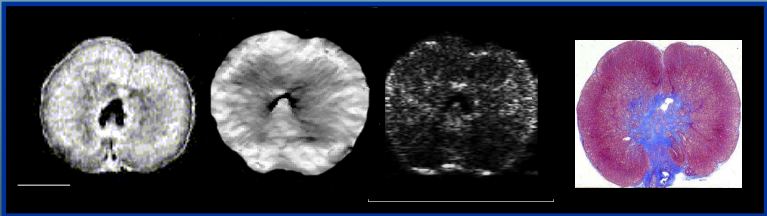


Photograph

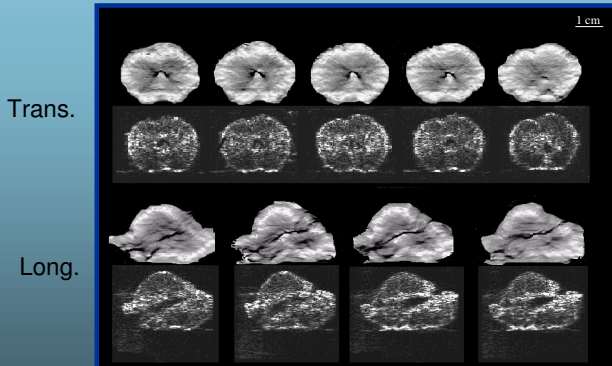


Sonogram

MRI, Elastogram, Sonogram and Pathology
Images from a Canine Prostate at 5 MHz
(1999)



Canine Prostate *in vitro* @ 5 MHz

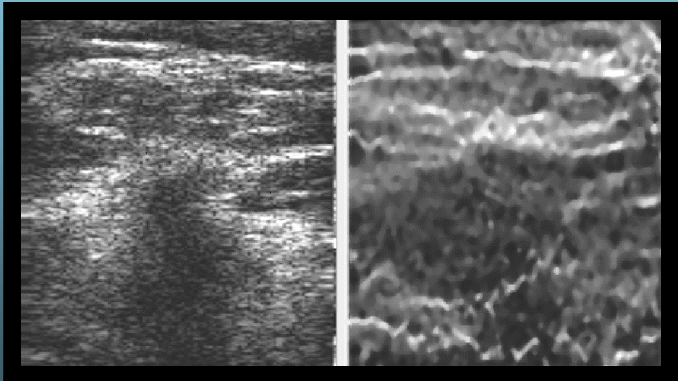


Infiltrating Ductal Carcinoma of the Breast

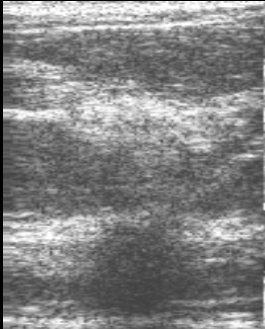
sonogram

(1996)

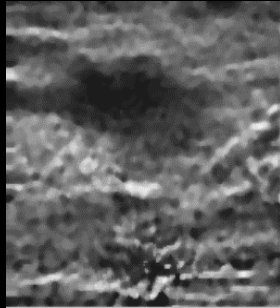
elastogram



Invasive Ductal Carcinoma (*1996*)



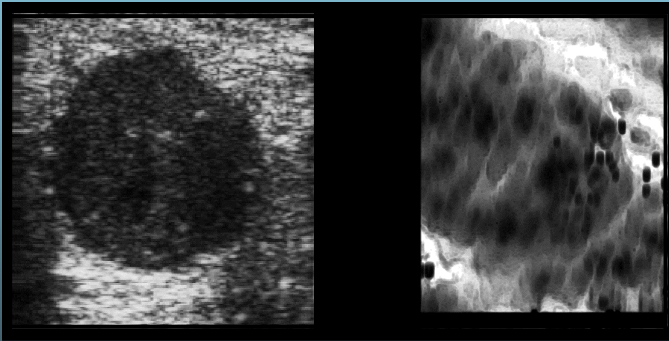
Sonogram



Elastogram

1996

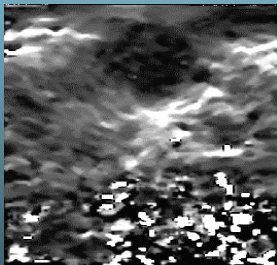
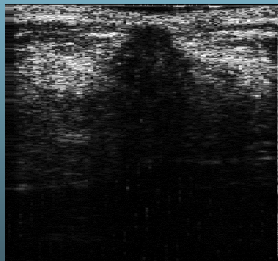
Multifocal Breast Cancer *in-vivo* (1998)



Sonogram

Elastogram

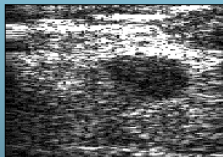
Infiltrating Ductal Carcinoma of the Breast
In Vivo at 5 MHz (1999)



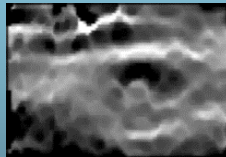
1

Breast tumors *in-vivo* (1999)

Fibroadenoma

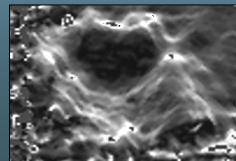
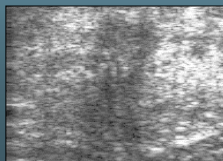


Sonograms

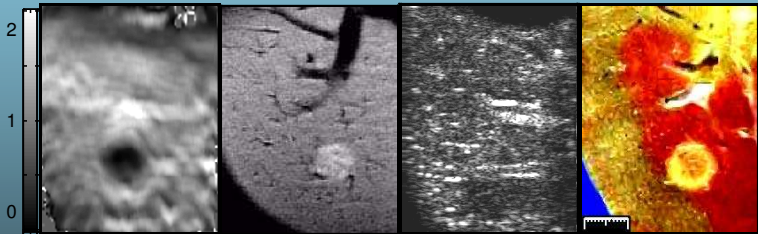


Elastograms

Infil. Duct. Carcinoma



HIFU lesion in Canine Liver




elastogram

T2 MRI

Sonogram

Pathology

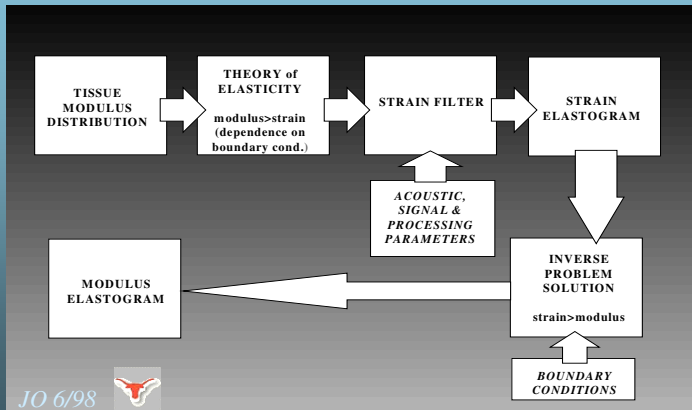
Elastography

- Definition
- Motivation
- Basic principles
- Early experiments and images
- Contemporary results
- **Future directions** 

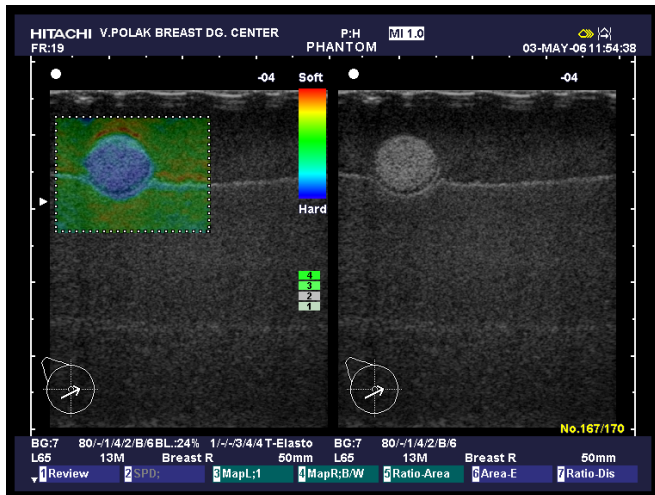
Conclusions and Future Directions

- Elastography conveys *new and probably clinically important tissue information*;
- The tradeoffs among engineering/elastographic image parameters are now reasonably well understood;
- Elastography can operate in hypoechoic areas (ex. shadows);
- Reliable *small elastic contrast exists among normal soft-tissue* components; good CNR allows its visualization;
- Pathology generally exhibits *large elastic contrast*;
- Promising areas include breast, prostate, vasculature, small parts and treatment monitoring.

Elastography: Block Diagram



Sonoelastogram — Hitachi



Alternativní elastografické techniky

Buzení

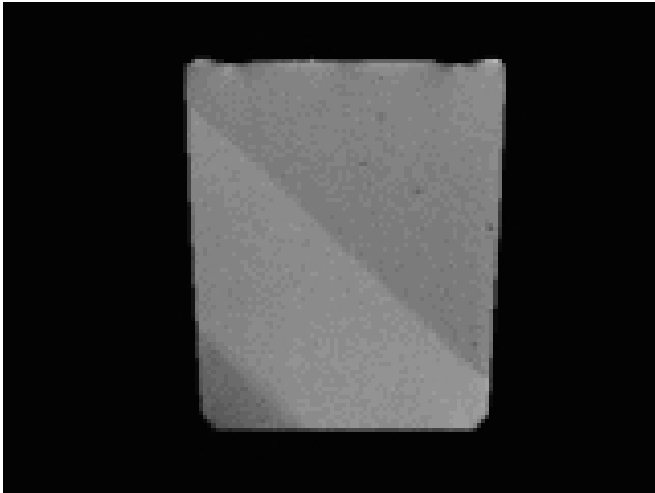
Excitace

- Kvazistatické (pomalé), tlakem sondy
- Impulsní
- Harmonické
 - Mechanicky
 - Interferencí ultrazvukových paprsků

Snímání

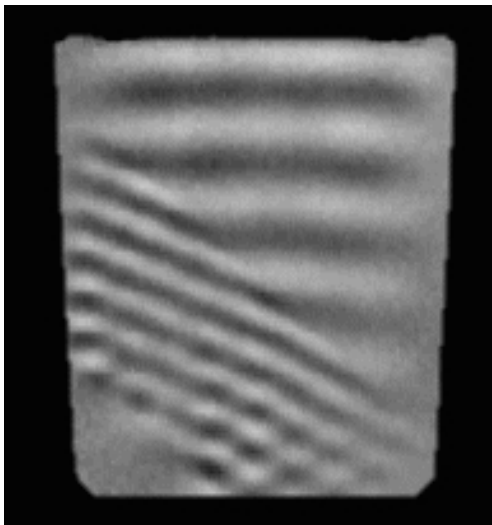
- Ultrazvuk
- Laserový vibrometr (interferometr)
- MRI
 - + 3D data

Fantom



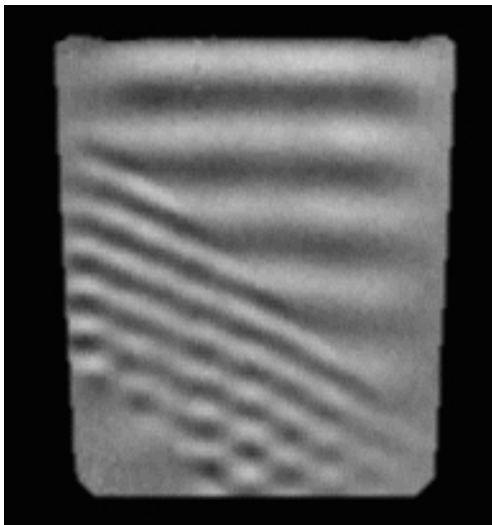
Materiály s různou tuhostí.

Harmonické buzení



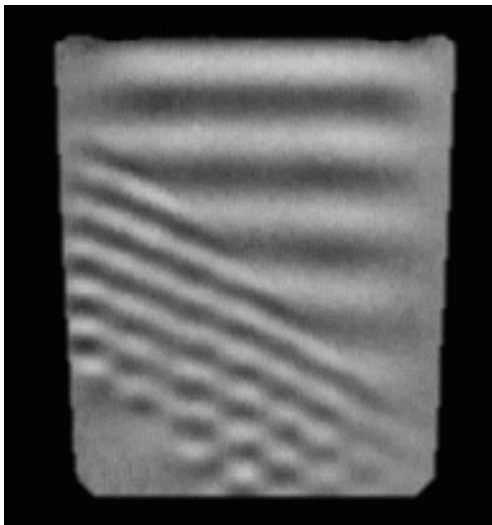
- MRI snímání
- Tužší hmota → rychlejší vlnění

Harmonické buzení



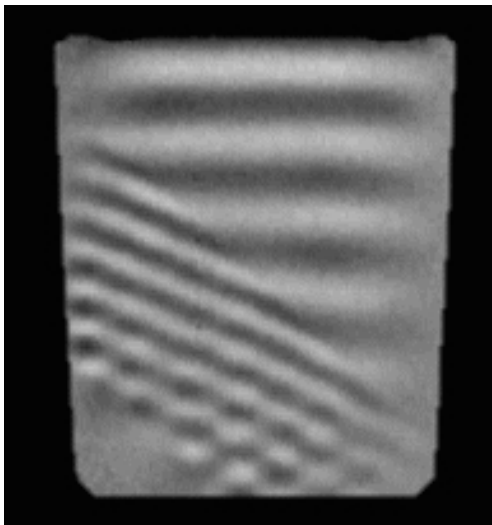
- MRI snímání
- Tužší hmota → rychlejší vlnění

Harmonické buzení



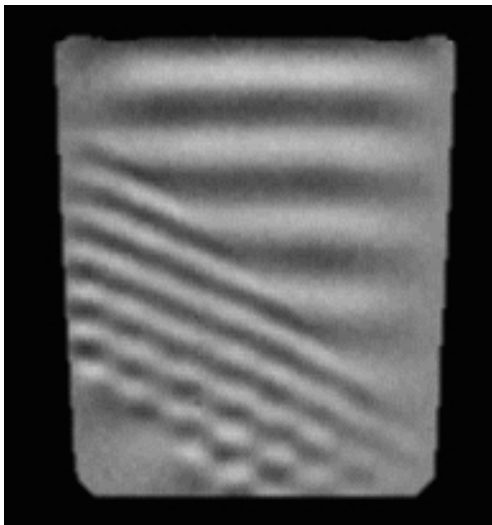
- MRI snímání
- Tužší hmota → rychlejší vlnění

Harmonické buzení



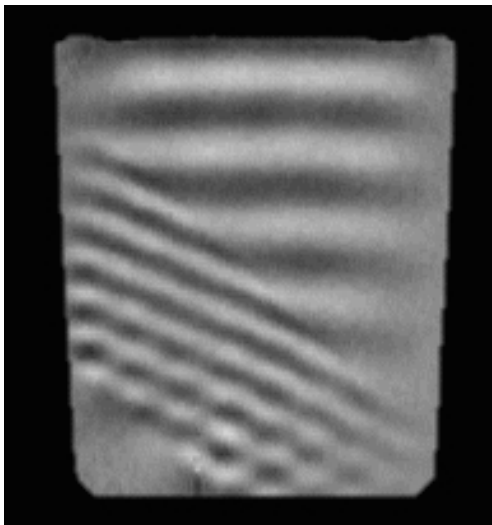
- MRI snímání
- Tužší hmota → rychlejší vlnění

Harmonické buzení



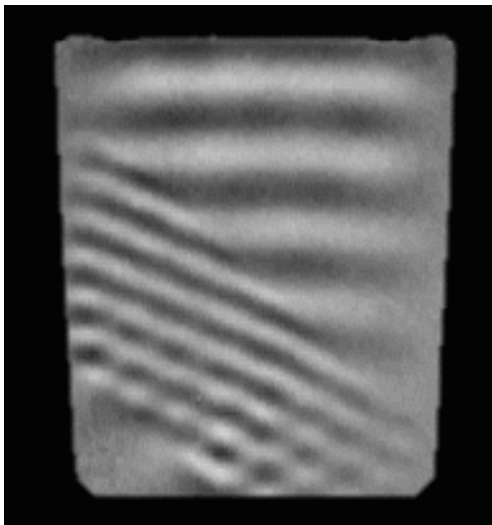
- MRI snímání
- Tužší hmota → rychlejší vlnění

Harmonické buzení



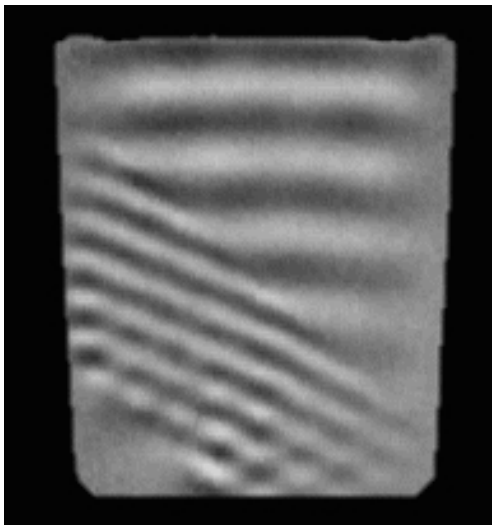
- MRI snímání
- Tužší hmota → rychlejší vlnění

Harmonické buzení



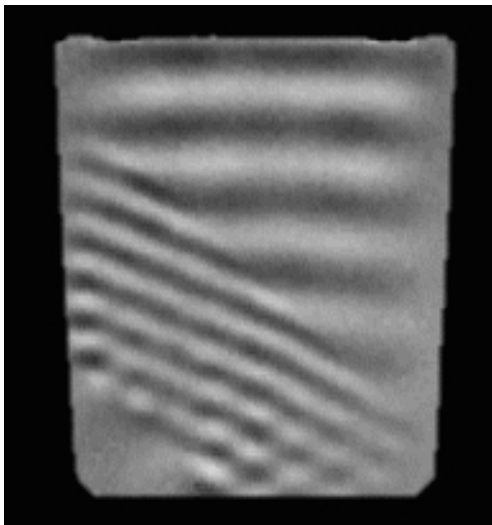
- MRI snímání
- Tužší hmota → rychlejší vlnění

Harmonické buzení



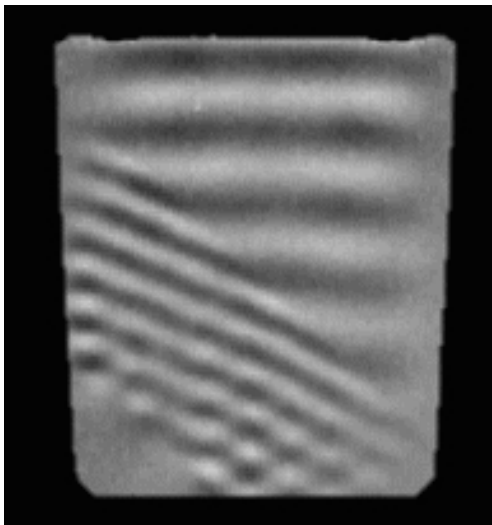
- MRI snímání
- Tužší hmota → rychlejší vlnění

Harmonické buzení



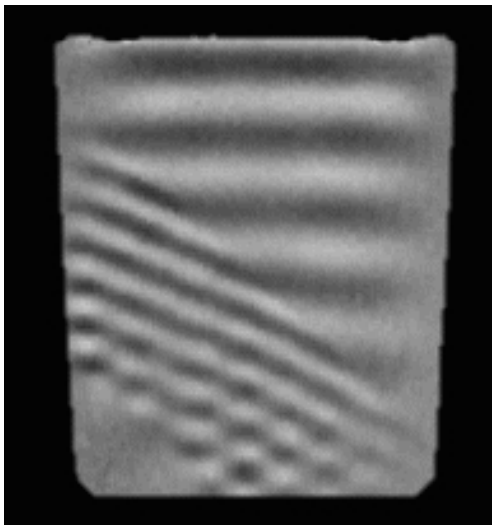
- MRI snímání
- Tužší hmota → rychlejší vlnění

Harmonické buzení



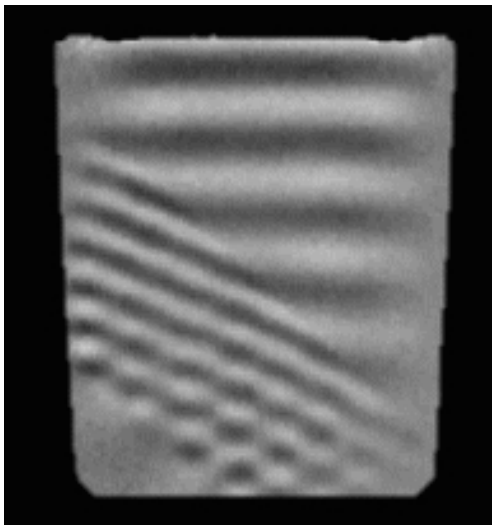
- MRI snímání
- Tužší hmota → rychlejší vlnění

Harmonické buzení



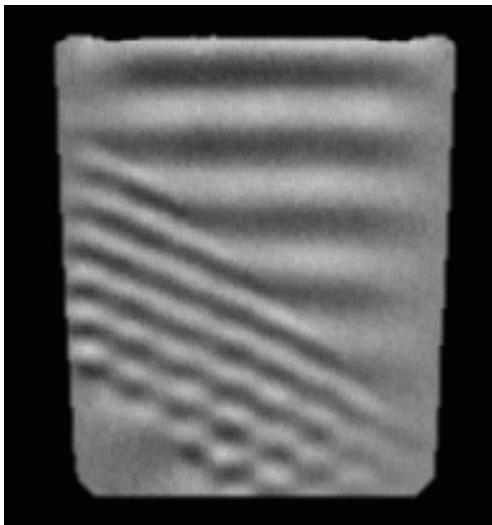
- MRI snímání
- Tužší hmota → rychlejší vlnění

Harmonické buzení



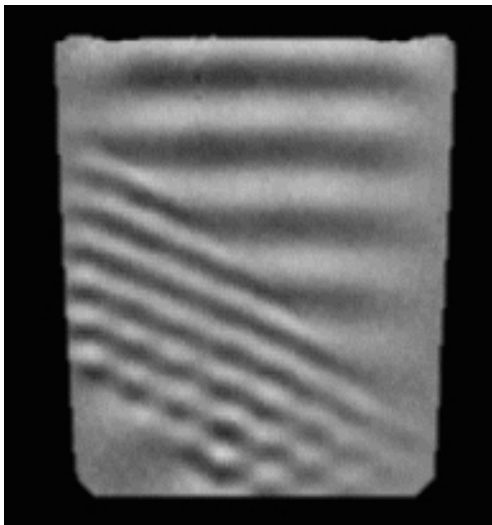
- MRI snímání
- Tužší hmota → rychlejší vlnění

Harmonické buzení



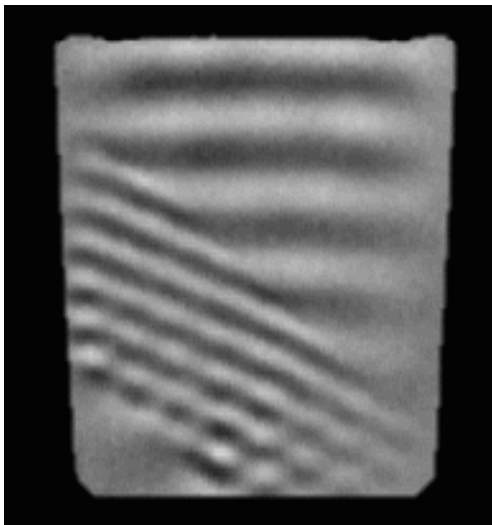
- MRI snímání
- Tužší hmota → rychlejší vlnění

Harmonické buzení



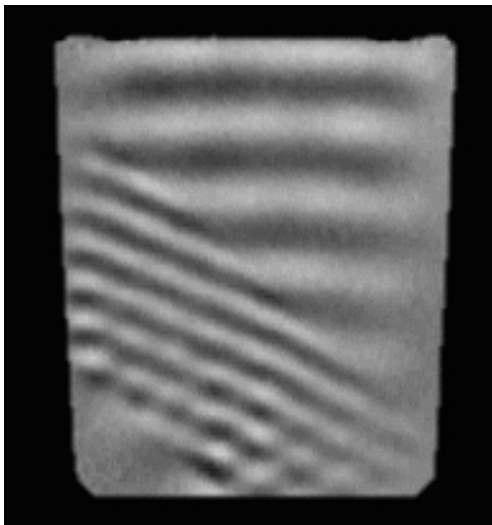
- MRI snímání
- Tužší hmota → rychlejší vlnění

Harmonické buzení



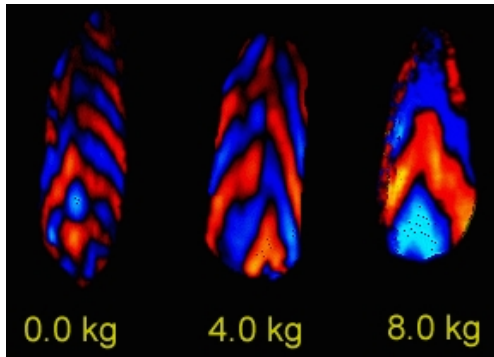
- MRI snímání
- Tužší hmota → rychlejší vlnění

Harmonické buzení

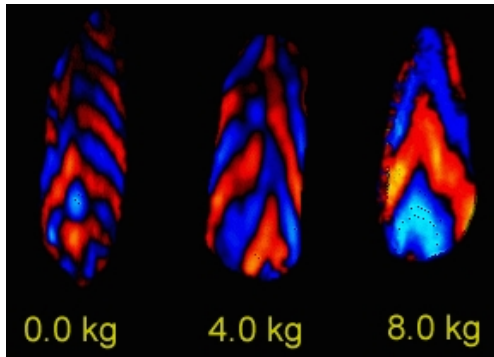


- MRI snímání
- Tužší hmota → rychlejší vlnění

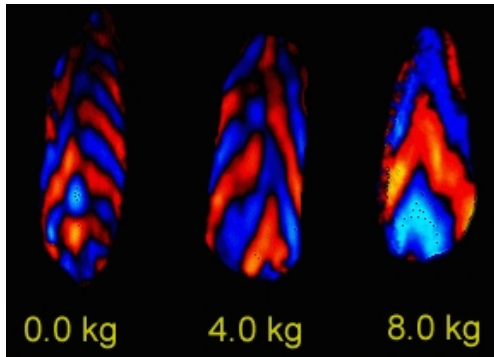
Sval při zatížení



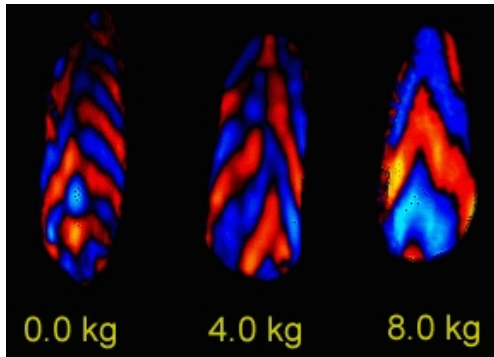
Sval při zatížení



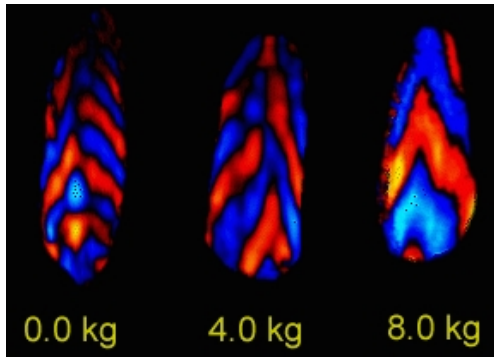
Sval při zatížení



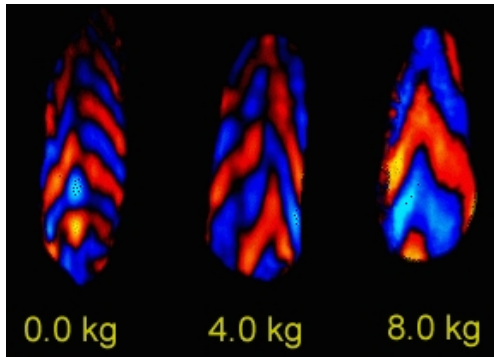
Sval při zatížení



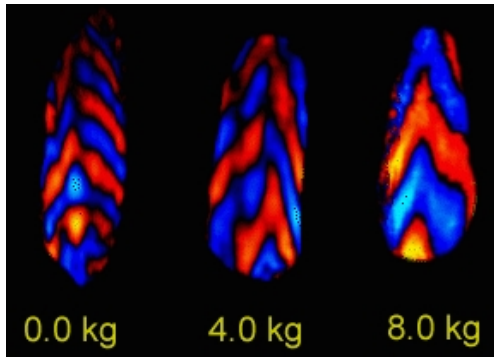
Sval při zatížení



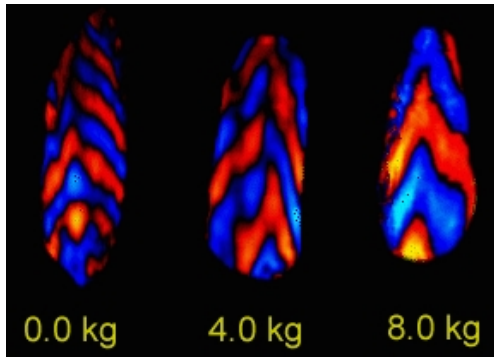
Sval při zatížení



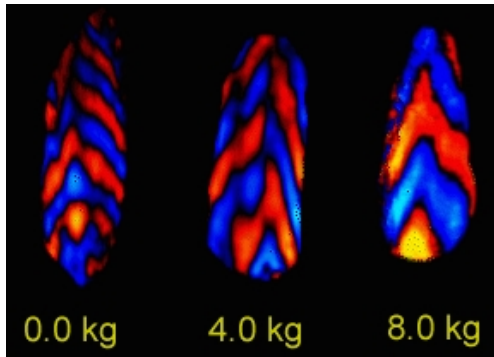
Sval při zatížení



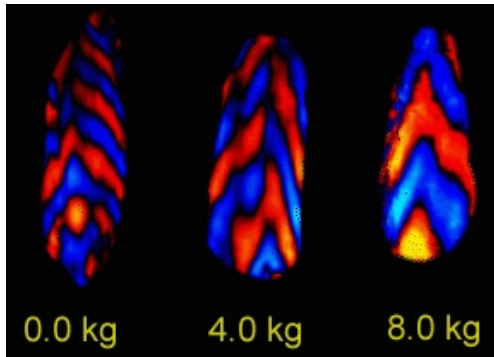
Sval při zatížení



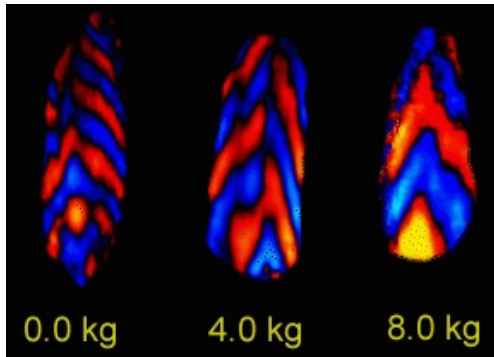
Sval při zatížení



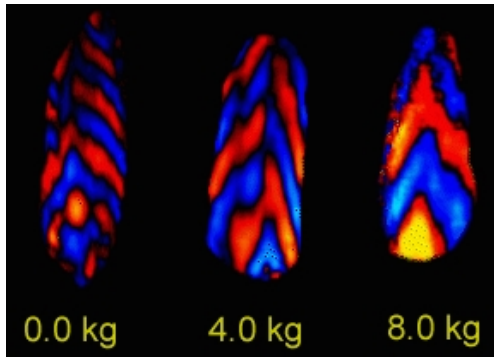
Sval při zatížení



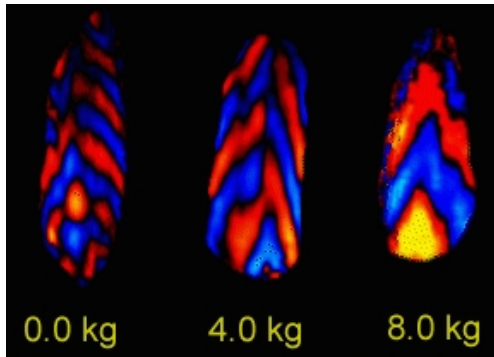
Sval při zatížení



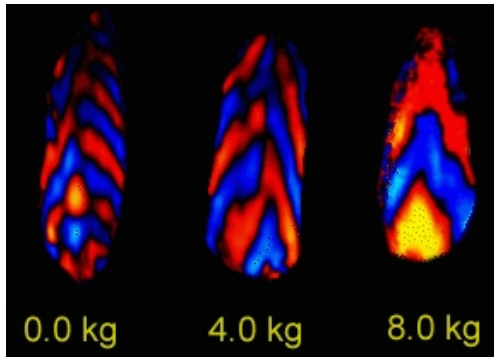
Sval při zatížení



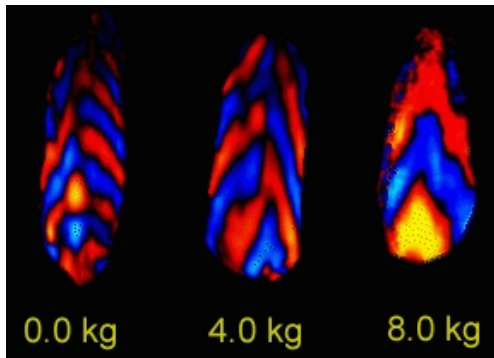
Sval při zatížení



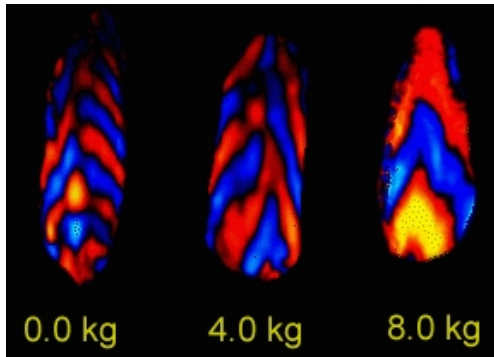
Sval při zatížení



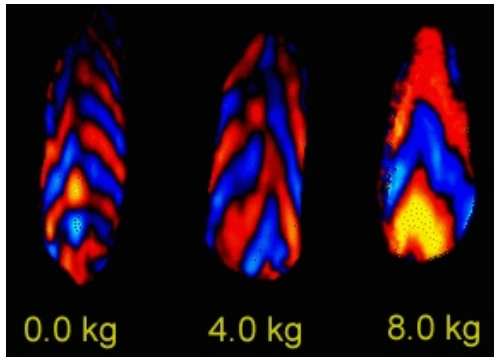
Sval při zatížení



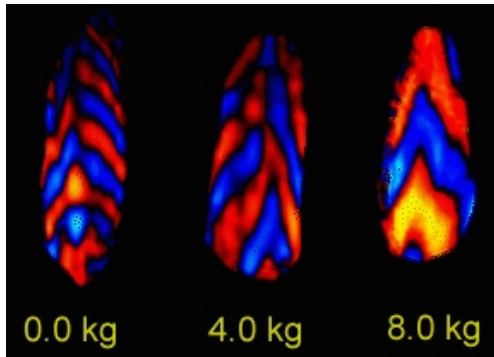
Sval při zatížení



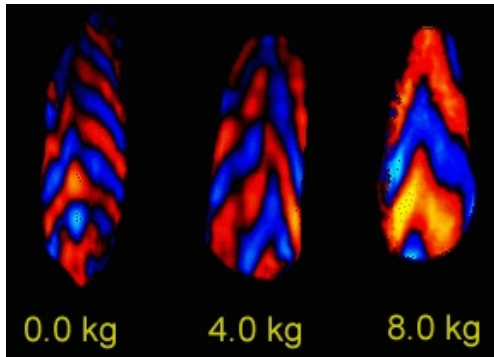
Sval při zatížení



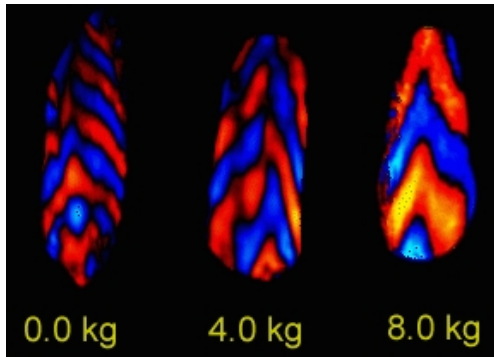
Sval při zatížení



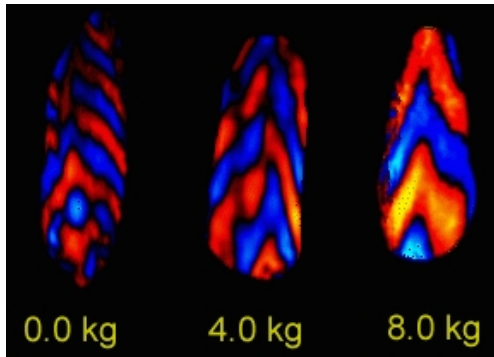
Sval při zatížení



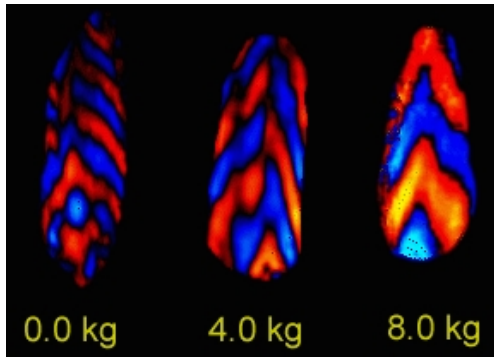
Sval při zatížení



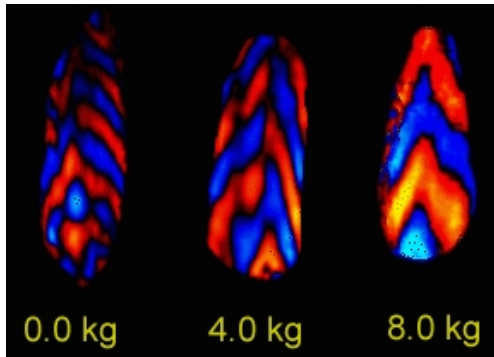
Sval při zatížení



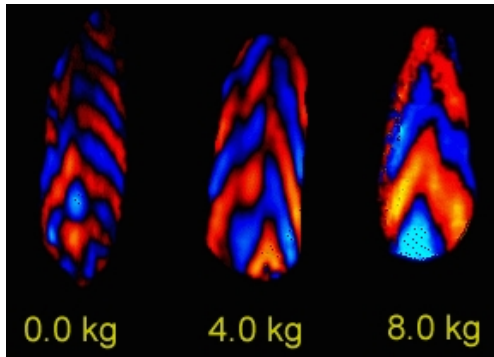
Sval při zatížení



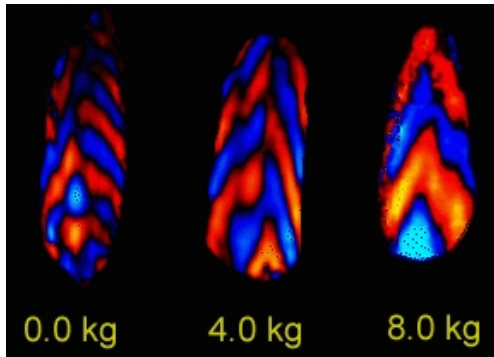
Sval při zatížení



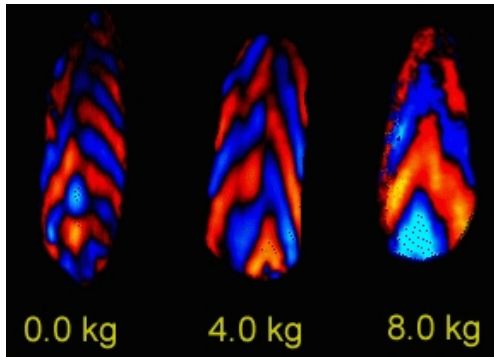
Sval při zatížení



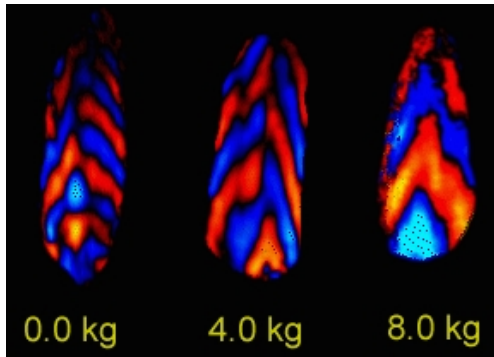
Sval při zatížení



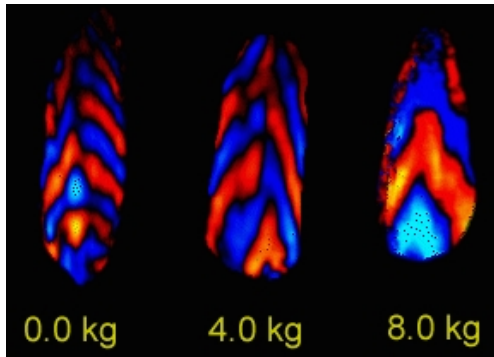
Sval při zatížení



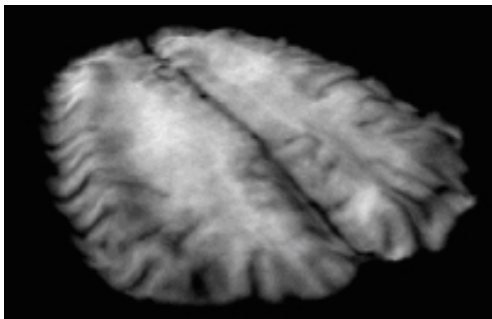
Sval při zatížení



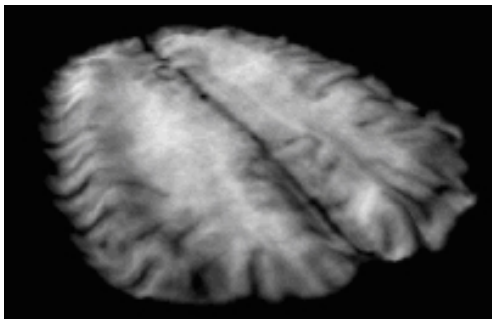
Sval při zatížení



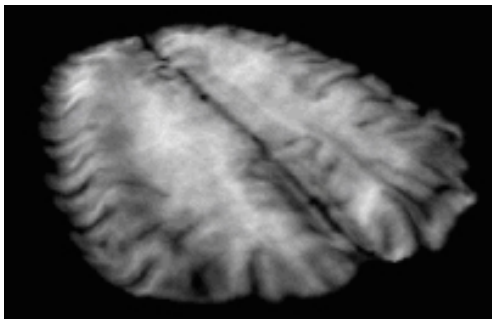
Vlnění v mozku



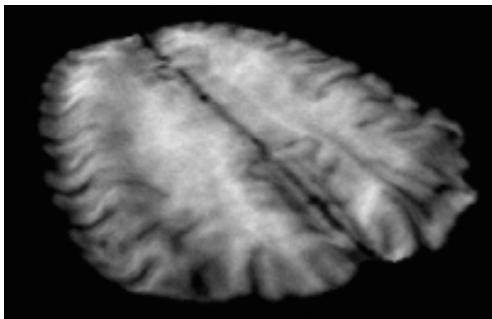
Vlnění v mozku



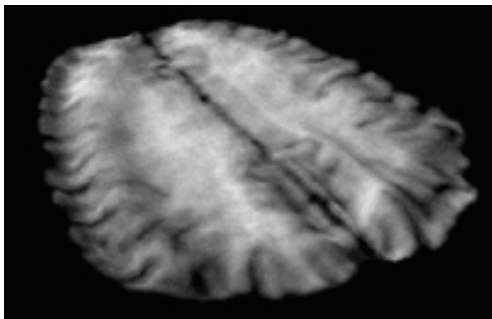
Vlnění v mozku



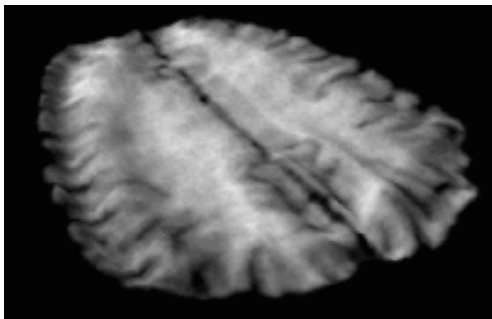
Vlnění v mozku



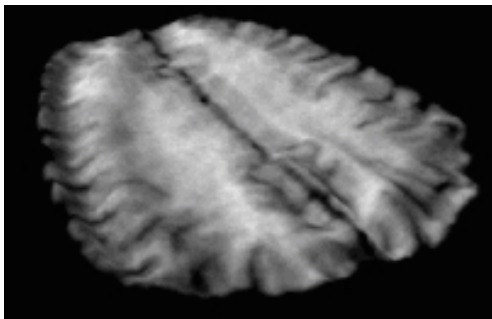
Vlnění v mozku



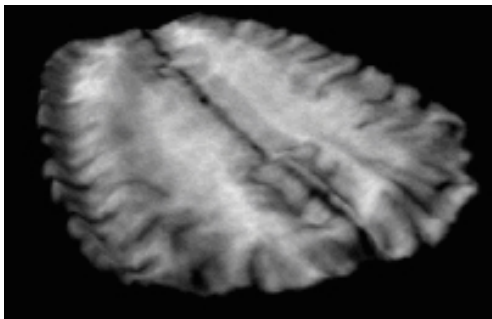
Vlnění v mozku



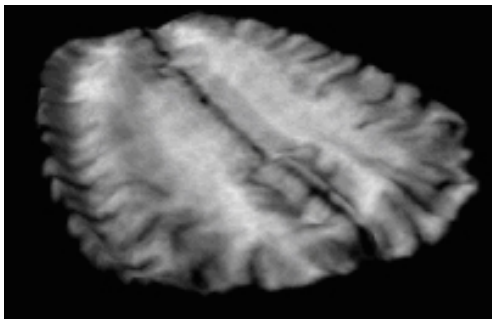
Vlnění v mozku



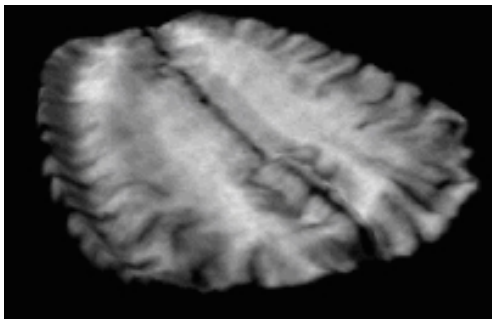
Vlnění v mozku



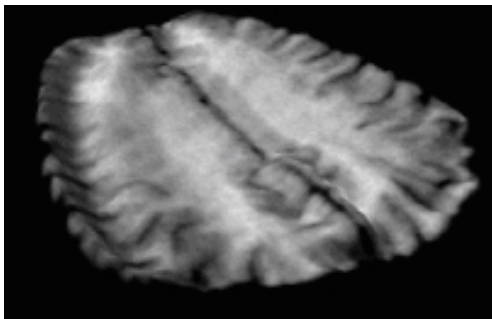
Vlnění v mozku



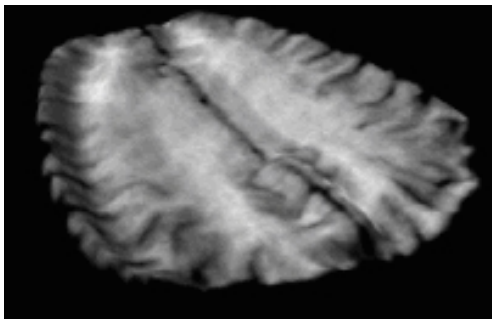
Vlnění v mozku



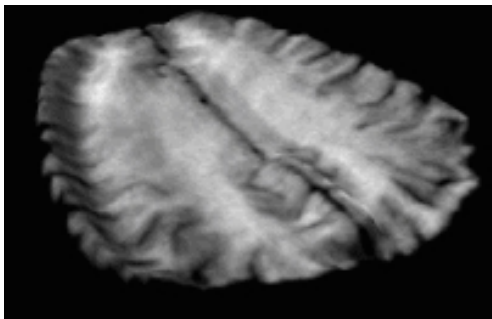
Vlnění v mozku



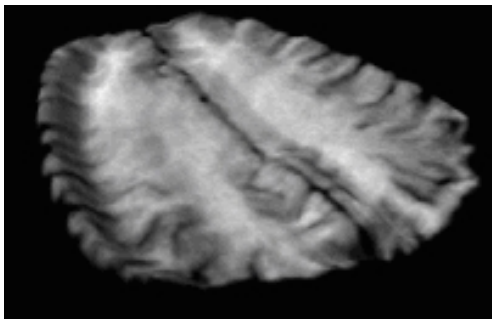
Vlnění v mozku



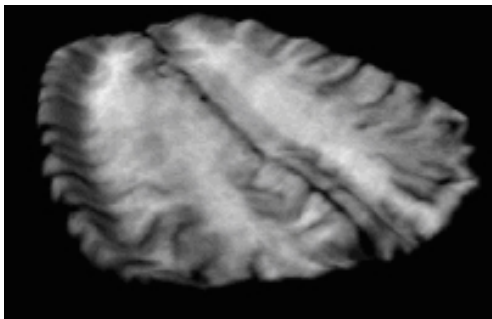
Vlnění v mozku



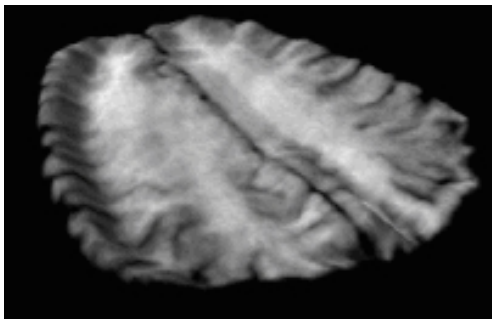
Vlnění v mozku



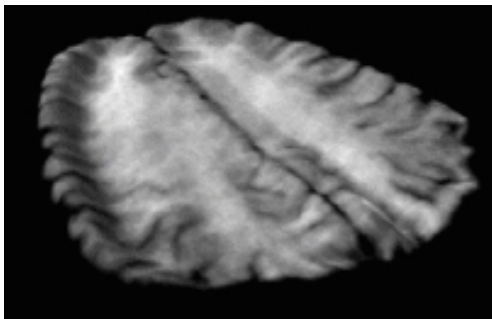
Vlnění v mozku



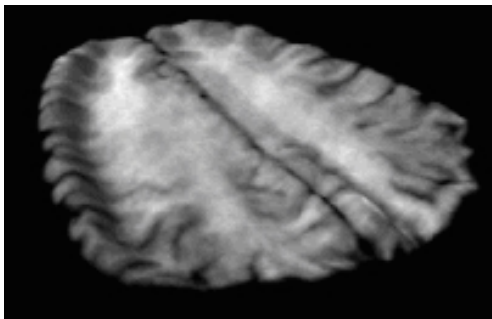
Vlnění v mozku



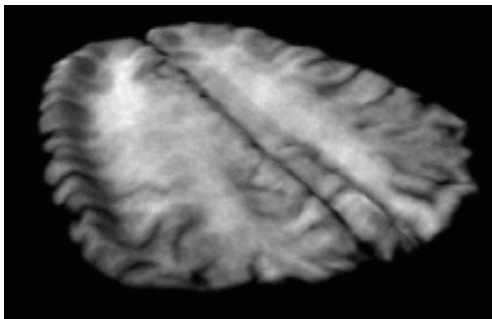
Vlnění v mozku



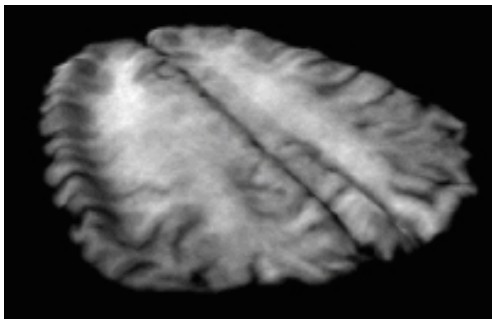
Vlnění v mozku



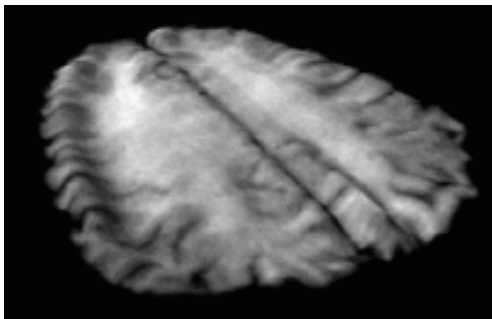
Vlnění v mozku



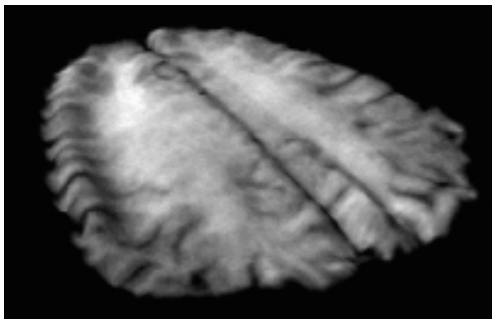
Vlnění v mozku



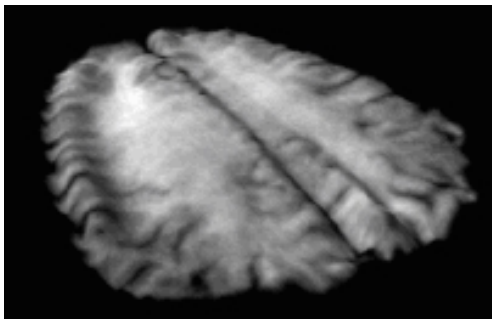
Vlnění v mozku



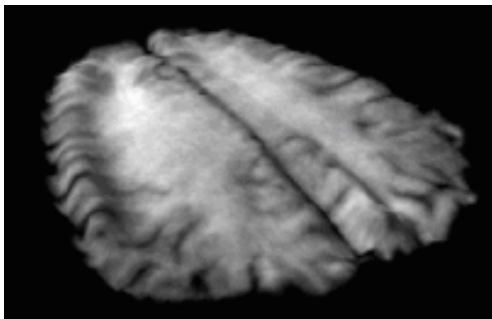
Vlnění v mozku



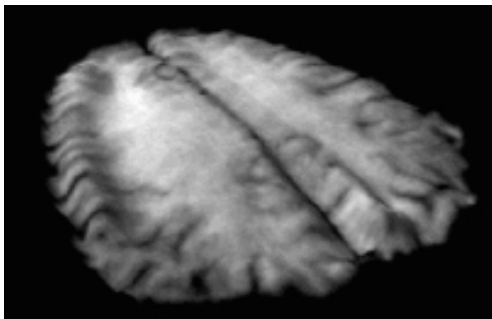
Vlnění v mozku



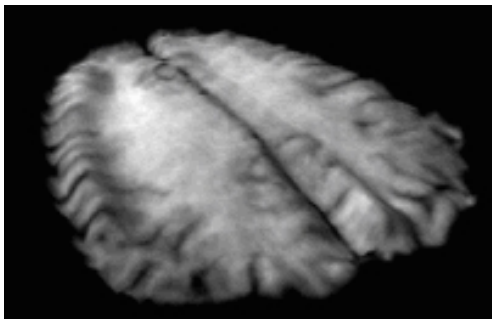
Vlnění v mozku



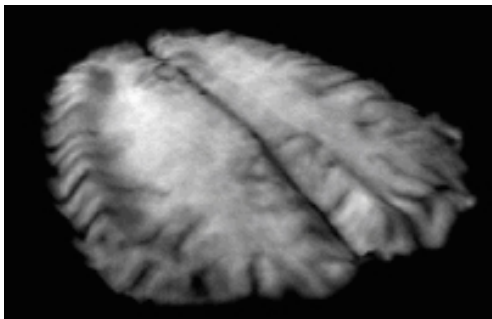
Vlnění v mozku



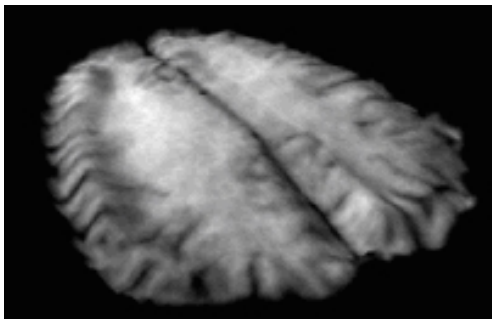
Vlnění v mozku



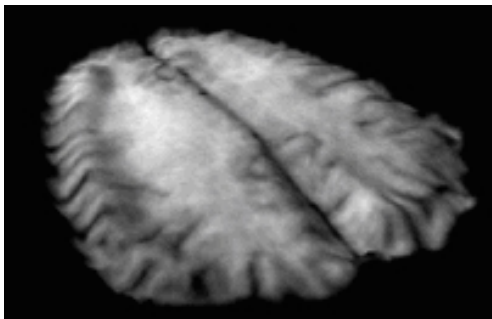
Vlnění v mozku



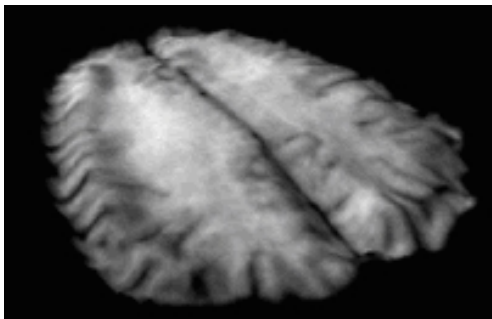
Vlnění v mozku



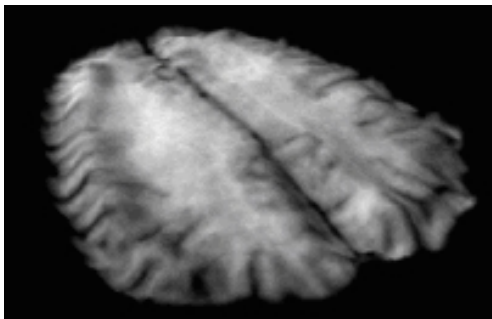
Vlnění v mozku



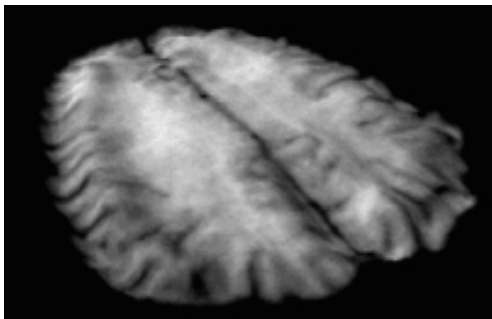
Vlnění v mozku



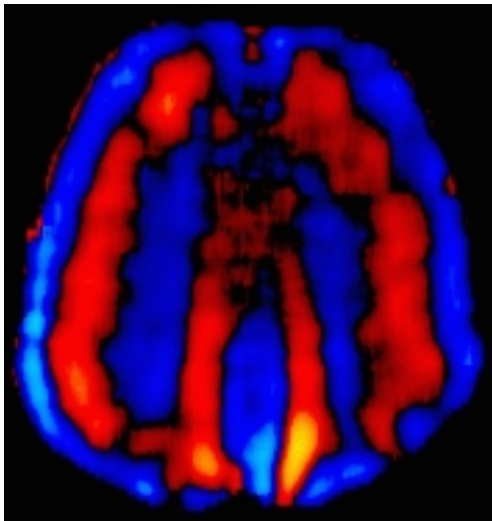
Vlnění v mozku



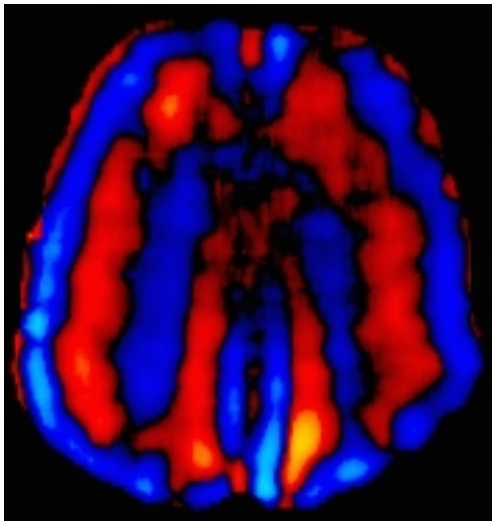
Vlnění v mozku



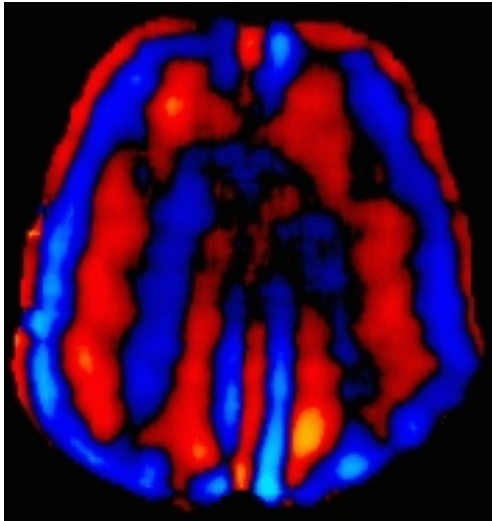
Vlnění v mozku (2)



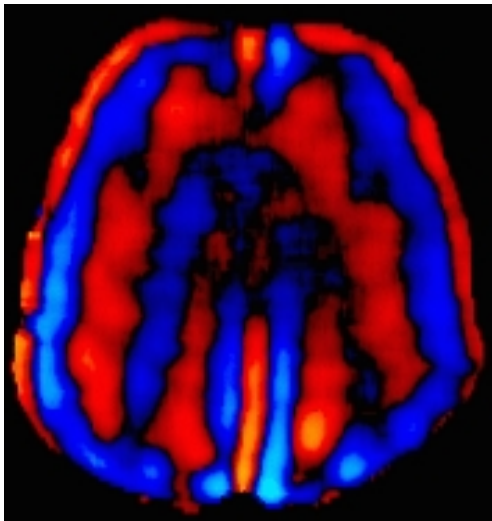
Vlnění v mozku (2)



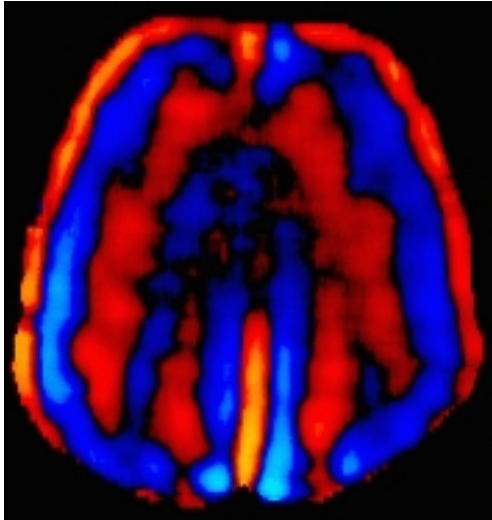
Vlnění v mozku (2)



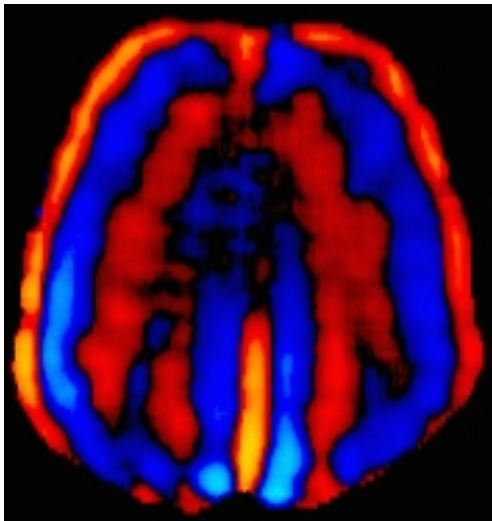
Vlnění v mozku (2)



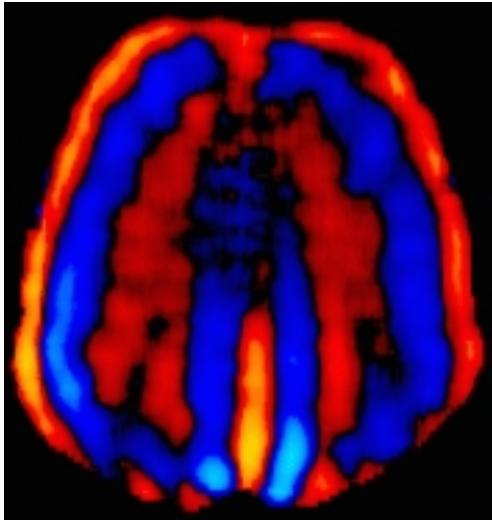
Vlnění v mozku (2)



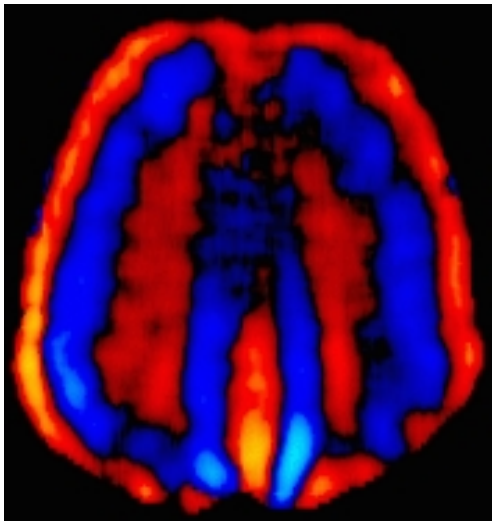
Vlnění v mozku (2)



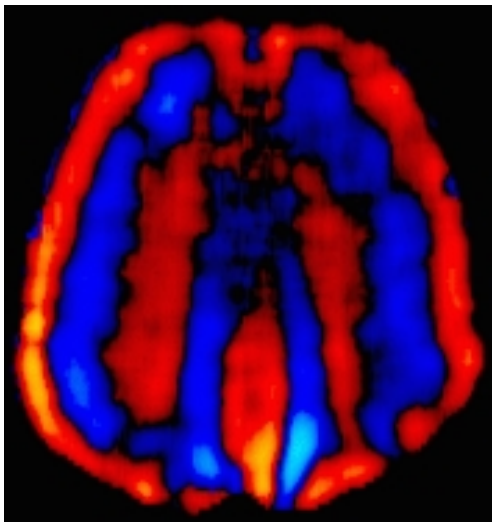
Vlnění v mozku (2)



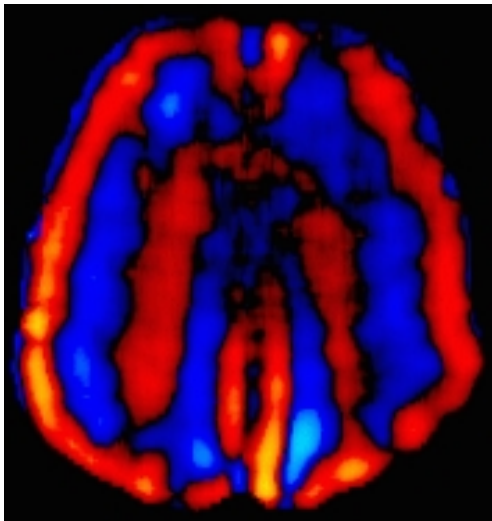
Vlnění v mozku (2)



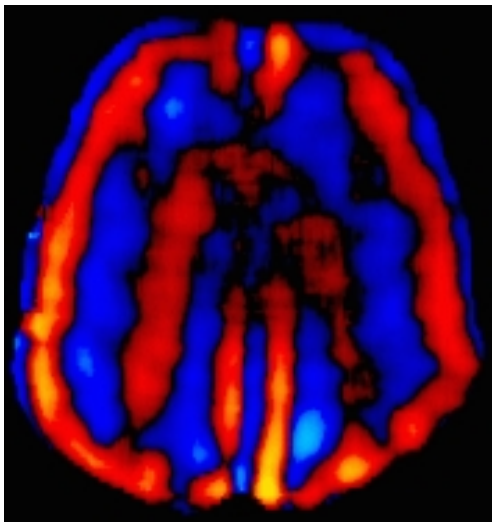
Vlnění v mozku (2)



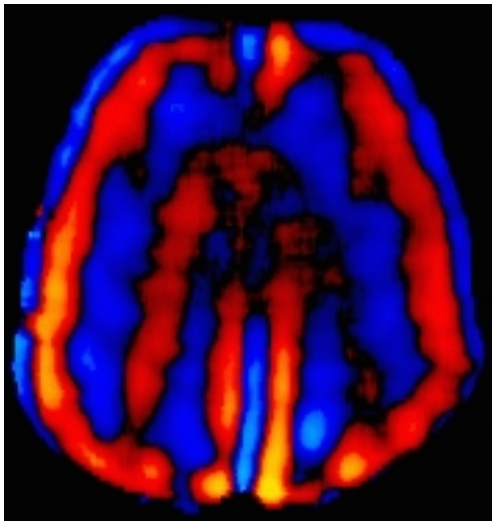
Vlnění v mozku (2)



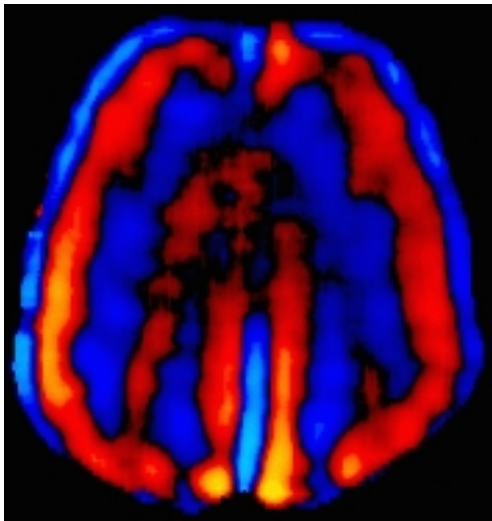
Vlnění v mozku (2)



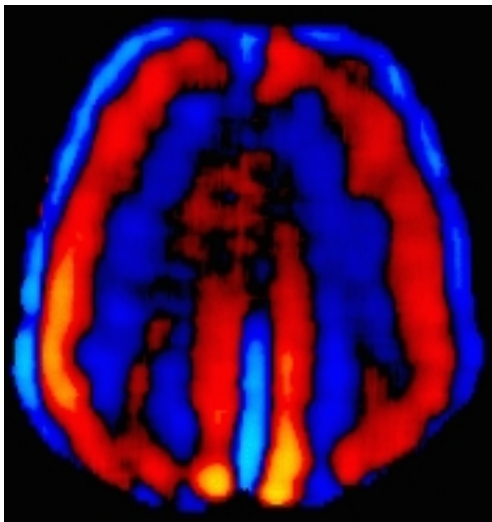
Vlnění v mozku (2)



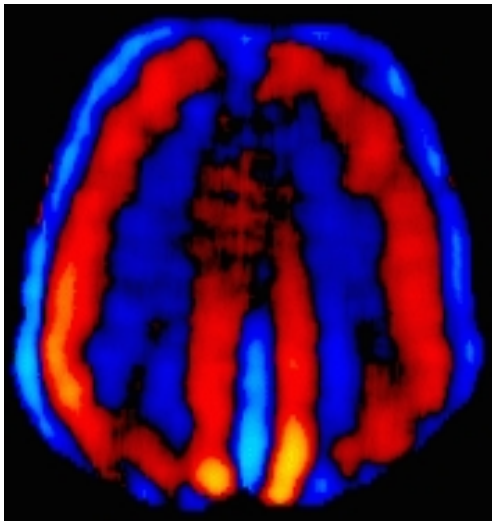
Vlnění v mozku (2)



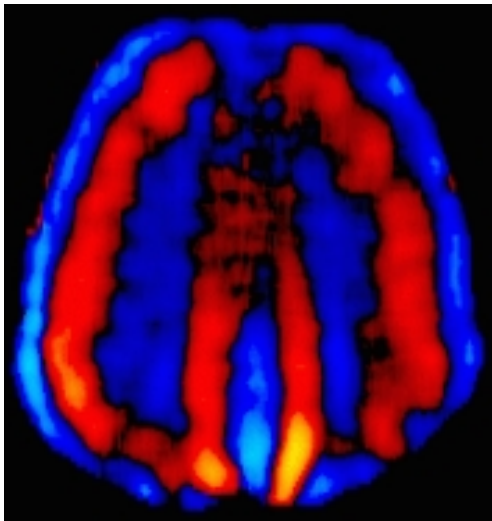
Vlnění v mozku (2)



Vlnění v mozku (2)



Vlnění v mozku (2)



Elastografie – závěr

- Neinvazivní metody měření elastických parametrů *in vivo*
- Tuhost často koreluje s diagnózou; klinické využití v blízké budoucnosti
- Technicky náročná řešení, specializovaný hardware
- Jednodušší snímání → složitý inverzní problém