

# IS courier shipment

Mihalovič Filip, Furtuna Andrei

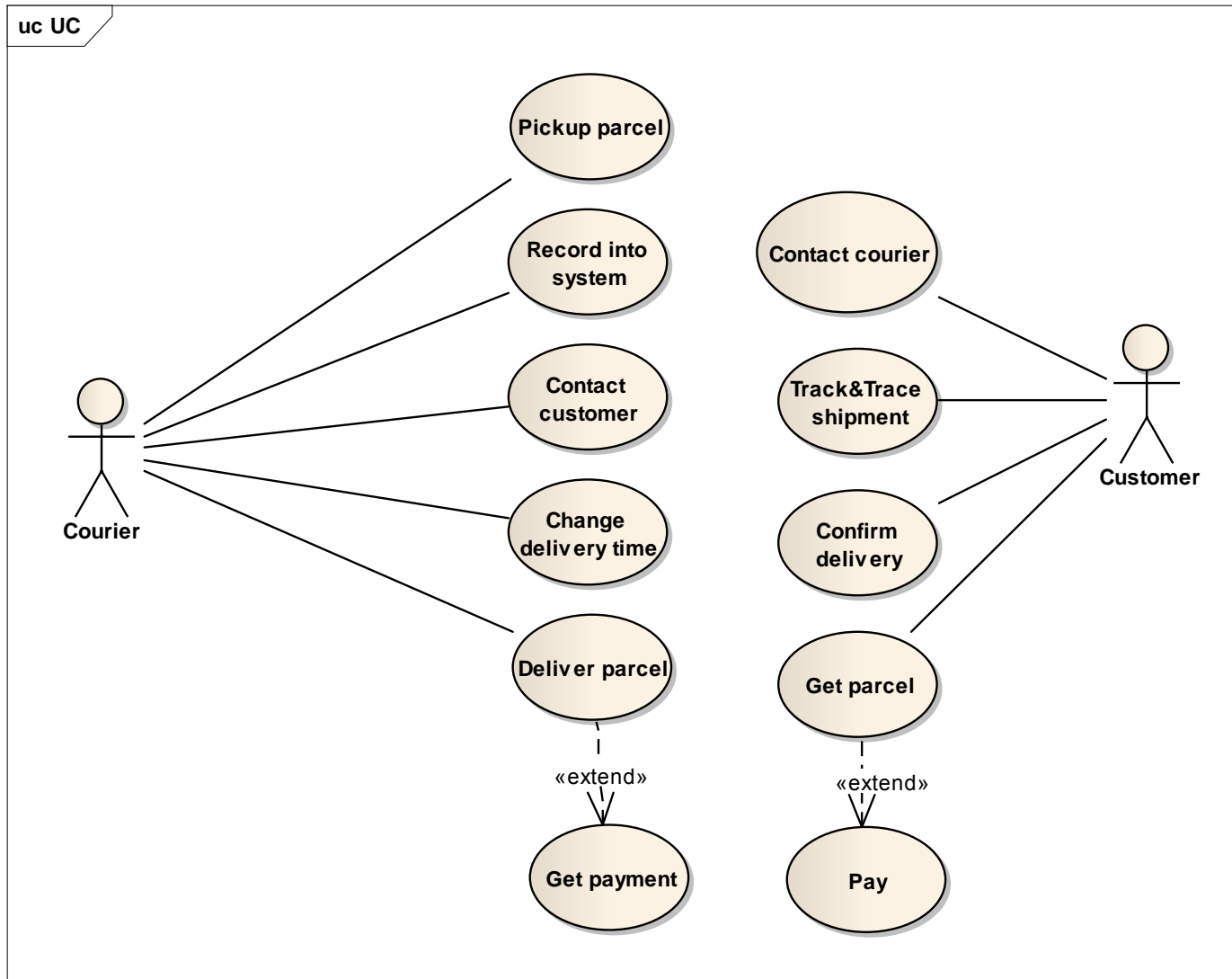
# Project scope

---

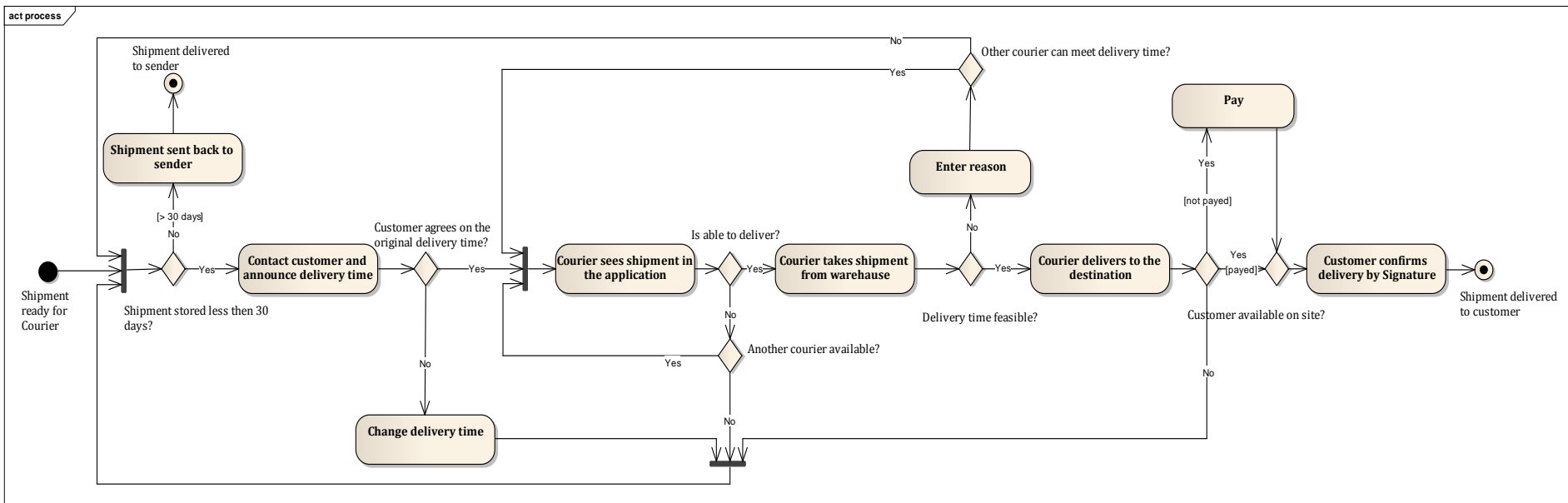
- ▶ courier management
- ▶ daily delivery activities
- ▶ real model that is implemented in more courier companies
- ▶ cover all possible process flow
- ▶ guarantee the customer's satisfaction.



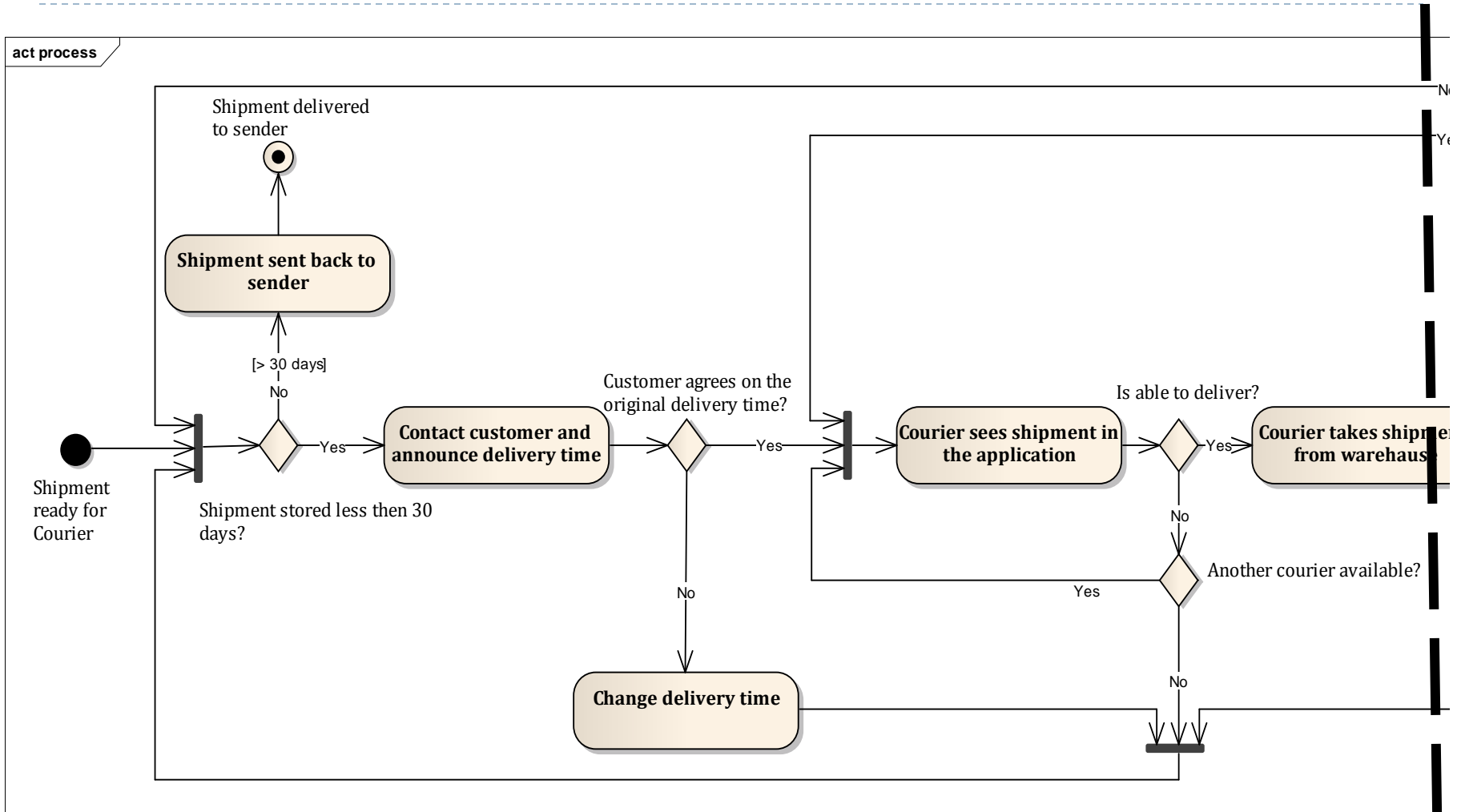
# Use Case diagram



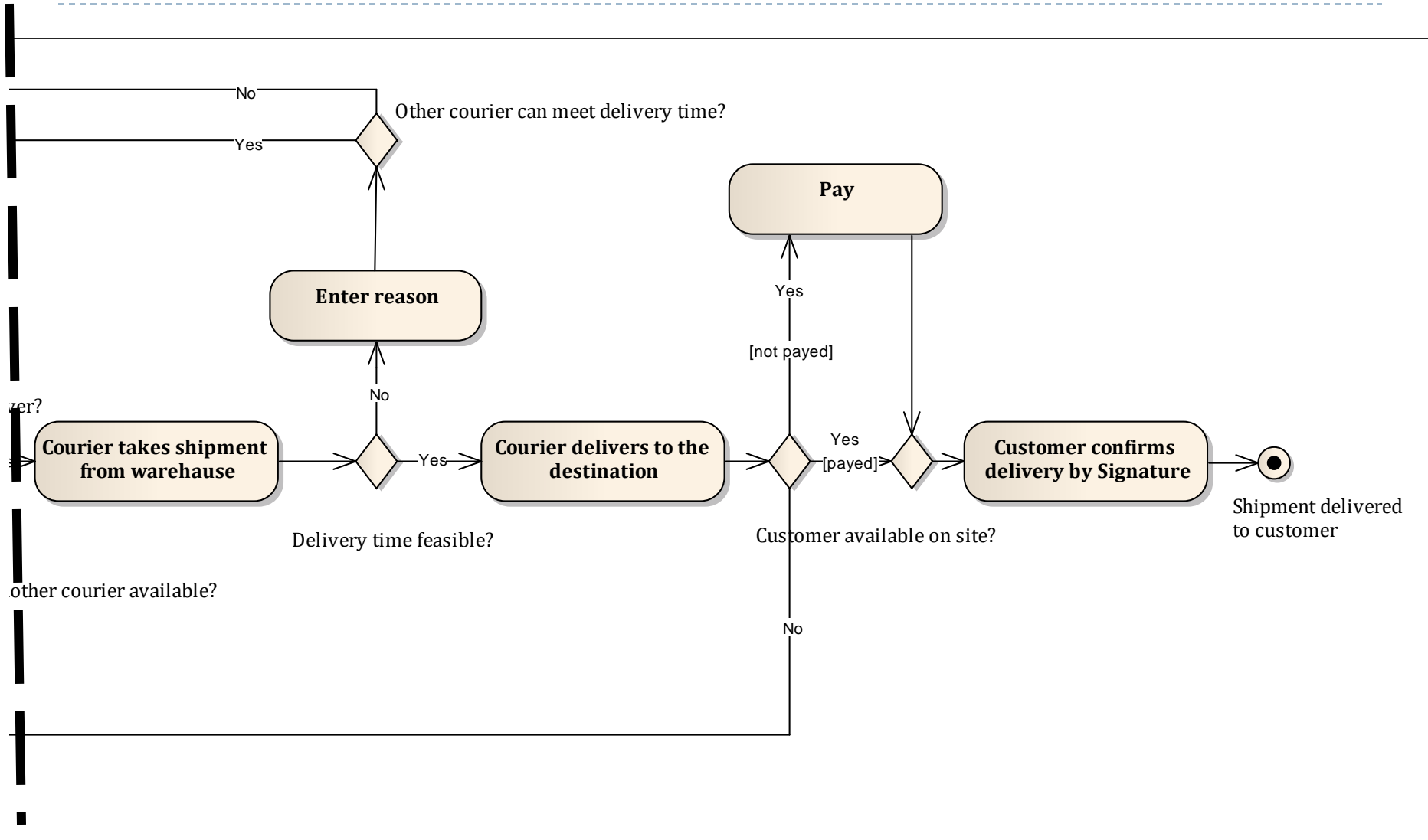
# Shipping process



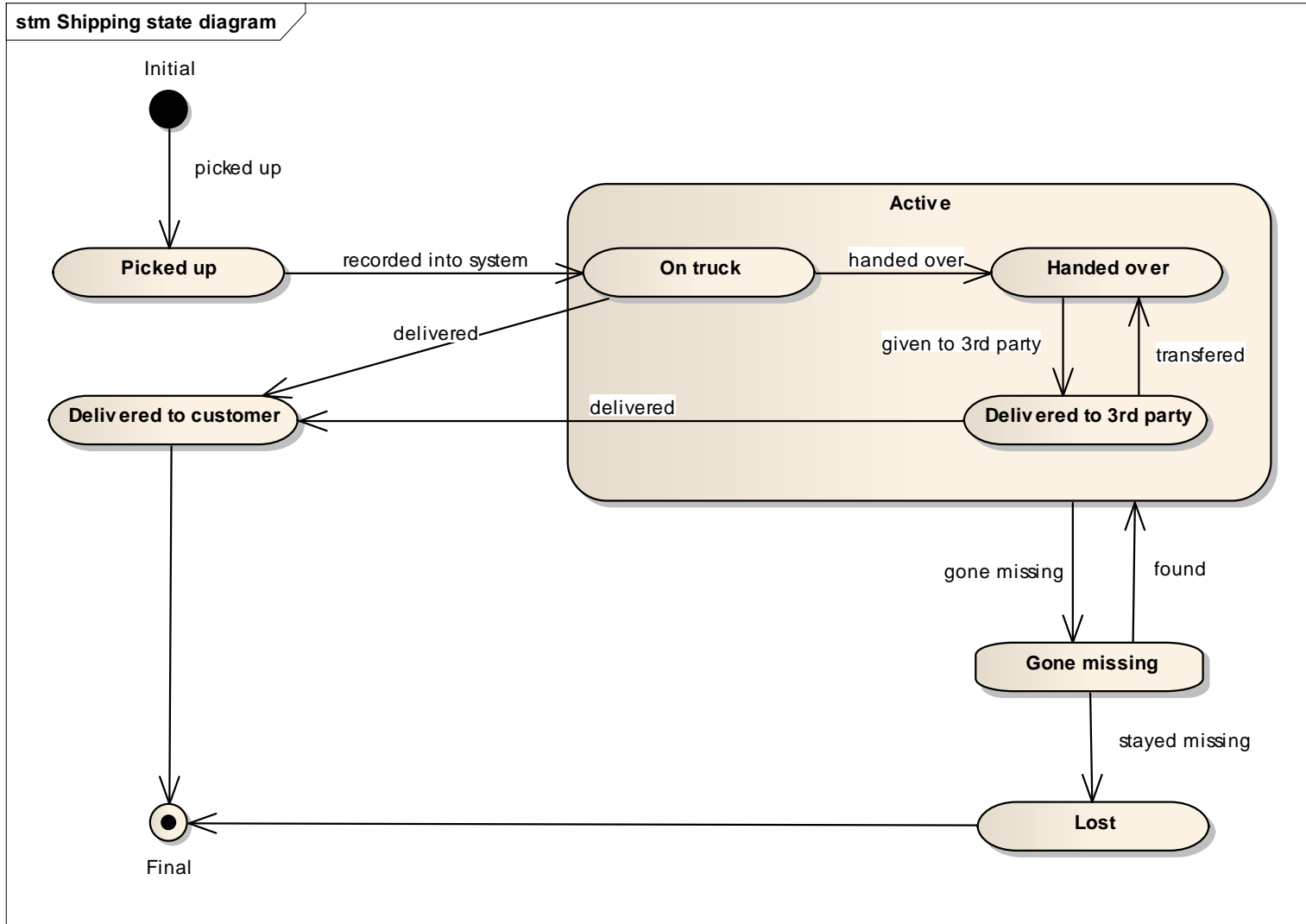
# Shipping process part 1



# Shipping process part 2

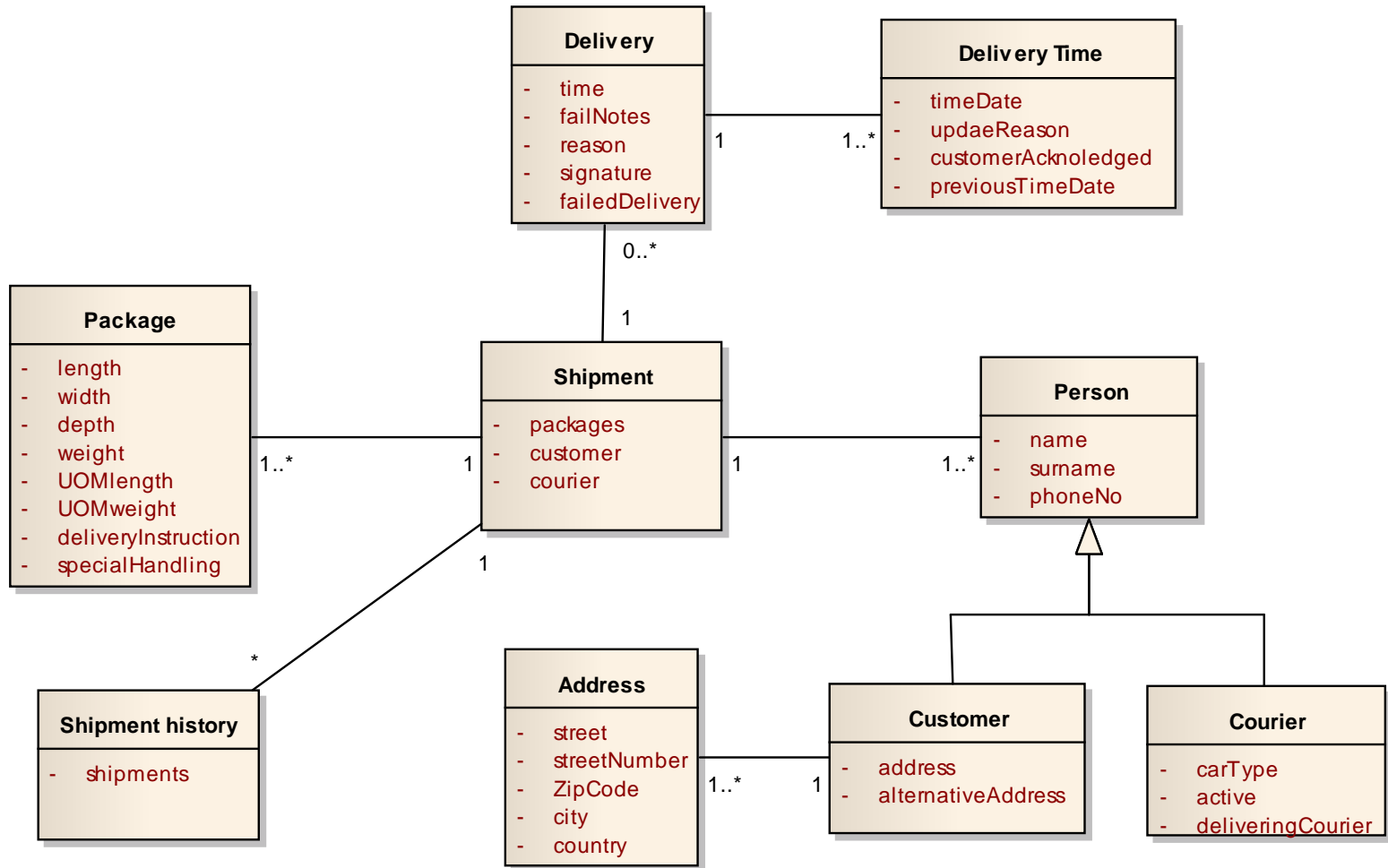


# Shipment State Diagram



# Class Diagram

class Class Model





# Advantages

---

- ▶ covers all process flow
- ▶ minimizes fuel consumption



# Questions

---

