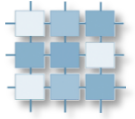


Task 1 – Lost in a huge maze

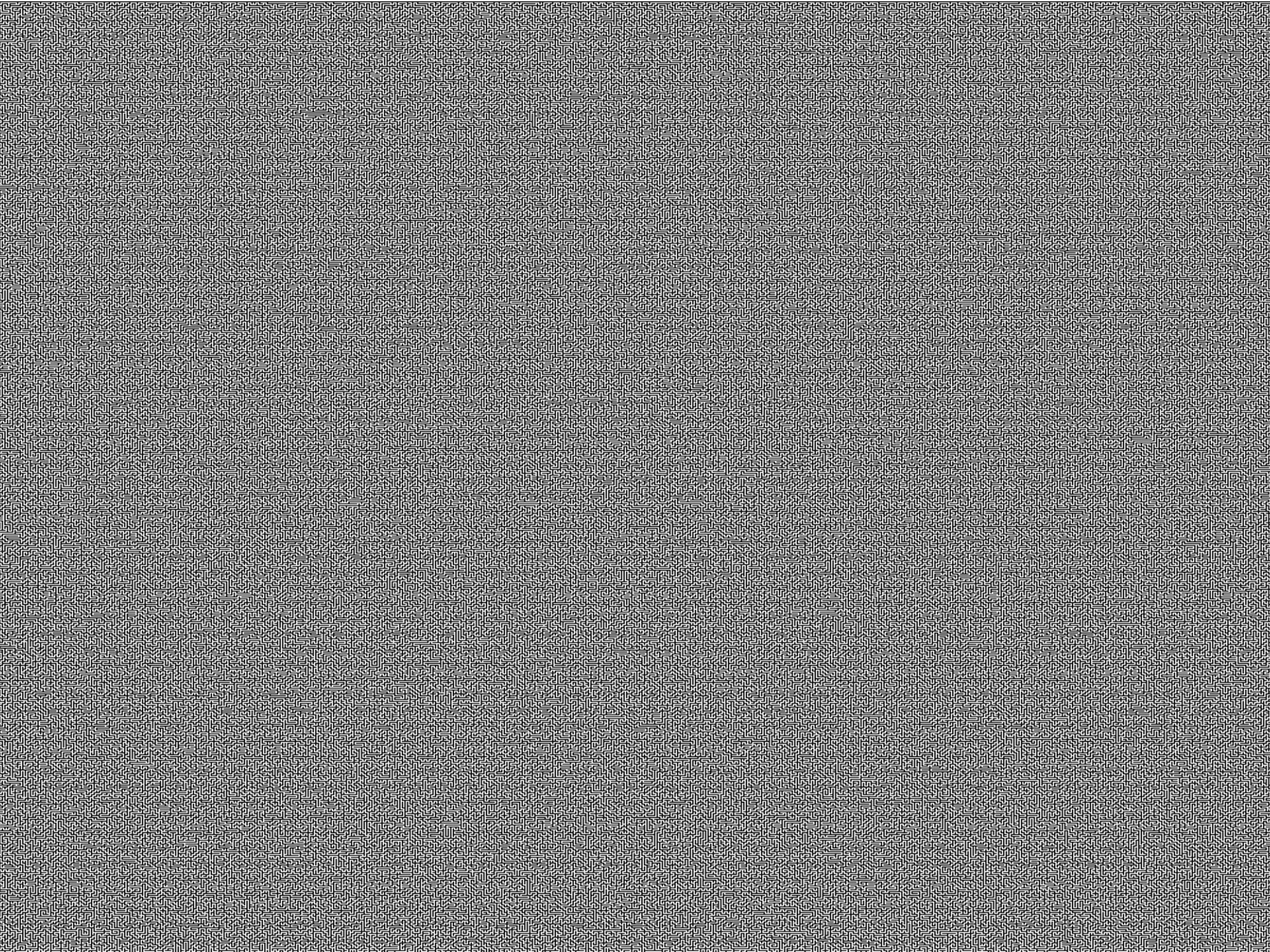
Czech Technical University in Prague, Faculty of Electrical Engineering

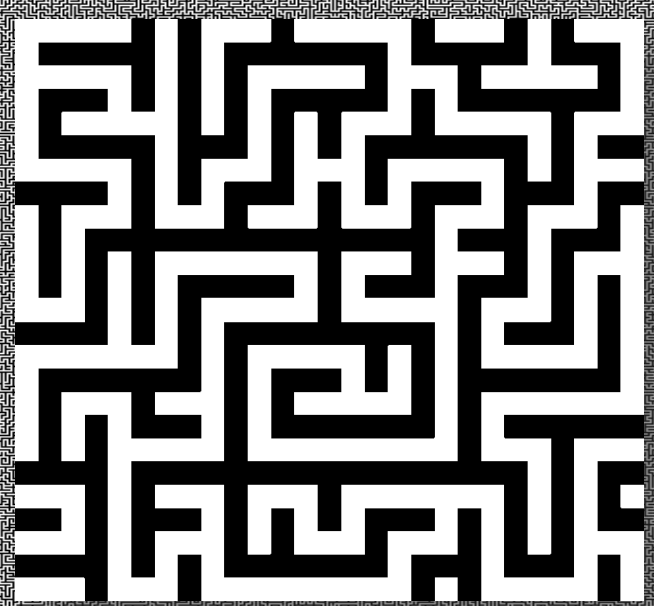
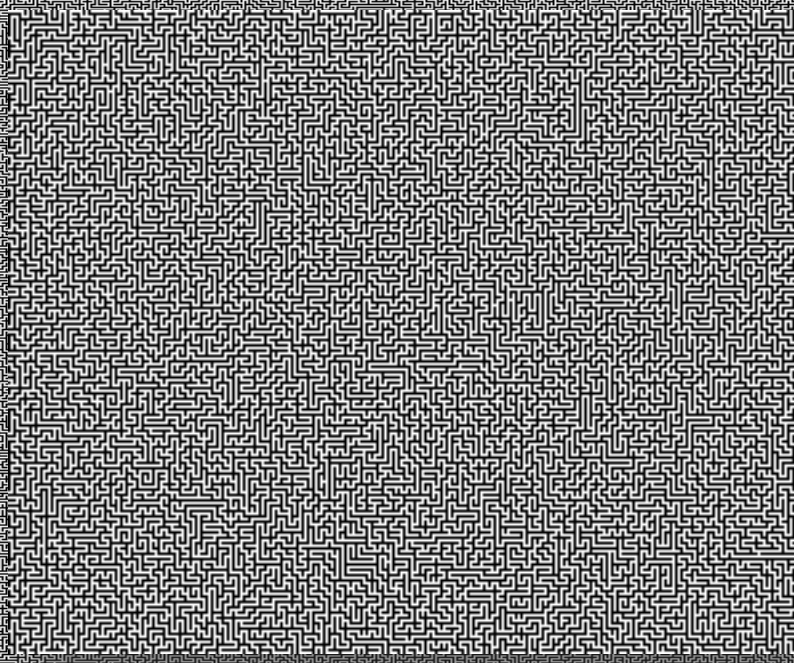
ZUI 2011, task 1

Description

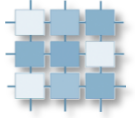


- Solve the largest maze ever created:
 - <http://www.astrolog.org/labyrnth/maze/largest.zip>
 - *“This as far as I can tell is the largest, most complicated Maze graphic on the internet today. It measures 5000 by 5000 passages on a 10001 by 10001 bitmap, and has 2534438 dead ends.”*
- Find a SHORTEST path from the upper left corner to the lower right corner



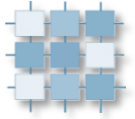


Setup



- RPH courseware pages – how to guide
 - https://cw.felk.cvut.cz/doku.php/courses/a4b99rph/cviceni/bludiste/grand_challenge
1. Look up your RPH code
 2. Go through your code and read your comments
 3. Laugh
 4. Throw the code away
 5. Start over

Development, Submission and Testing notes



- Create your algorithm to be modular and reusable!
 - Program to **interface**, not to implementation
 - **Decouple** important parts (heuristics, goal test, ...)
 - ... and of course, **comment** your code (for you and for us)

- Submit MyPlayer.java file with your code to the upload system
 - <https://cw.felk.cvut.cz/ulohy/>

- Deadline – 27.2.2011 23:59 CEST