

# Java Persistence API (JPA)

Petr Křemen

`petr.kremen@cvut.cz`

Winter Term 2022



# Contents

- 1 Data Persistence
- 2 From JDBC to JPA
- 3 JPA Basics
- 4 Object-Relational Mapping (ORM) Basics
- 5 ORM Relationship Mapping
- 6 ORM Inheritance Mapping
- 7 Summary



# Data Persistence



# What “data persistence” means ?

We manipulate data (represented as object state) that need to be stored

- persistently** to survive a single run of the application
- queriably** to be able to retrieve/access them
- scalably** to be able to handle large data volumes
- transactionally** to ensure their consistency



# How to achieve persistence I

- Serialization**
- simple, yet hardly queriable, not transactional, ...
  - stream persisting an instance of class C is deprecated once definition of C is modified (e.g. field added/removed).

**Relational Databases** (MySQL, PostgreSQL, Oracle, ...)

- efficient storage for data with rigid schema
- well-established and most popular technology
- efficient search using SQL standard
- secure and Transactional (ACID)



# How to achieve persistence II

## NoSQL Databases

Key-value storages (MongoDB, Hadoop, ...)

- suitable for data without rigid schema
- Object Databases
  - designed in 90's to capture complexity of object models (e.g. inheritance)
  - Issues: scalability, standardized queries

## RDF Triple Stores (SDB, TDB, Sesame, Virtuoso, ...)

- graph stores for distributed semantic web data – RDF(S), OWL



# Programmatic Access to Relational Databases (RDBMS)

- JDBC (JSR 221)
  - Java standard to ensure independence on the particular RDBMS (at least theoretically)
- EJB 2.1 (JSR 153)
  - Provides Object Relational Mapping (ORM), but complicated (*single entity = several Java files + XMLs*)
  - distributed transactions, load balancing
- iBatis, Hibernate – ORM driving forces for JPA 2
- JPA 2 (JSR 317)
  - Standardized ORM solution for both standalone and Jakarta EE applications



# From JDBC to JPA





# JDBC

Java standard to ensure independence on the particular RDBMS (at least theoretically)

```
Connection connection = null;
PreparedStatement statement = null;
try {
    Class.forName("org.postgresql.Driver");
    connection = DriverManager.getConnection(jdbcURL,dbUser,dbPassword);
    statement = connection.prepareStatement("SELECT * FROM PERSON WHERE HASNAME LIKE ?");
    statement.setString(1, "%Pepa%");
    ResultSet rs = statement.executeQuery();
} catch (ClassNotFoundException e) {
    e.printStackTrace();
} catch (SQLException e) {
    e.printStackTrace();
    if ( statement != null ) {
        try {
            statement.close();
        } catch (SQLException e1) {
            e1.printStackTrace();
        }
    }
}
if ( connection != null ) {
    try {
        connection.close();
    } catch (SQLException e1) {
        e1.printStackTrace();
    }
}
}
```



# JDBC – entities CRUD

## Create

```
PreparedStatement statement =  
    connection.prepareStatement("INSERT  
    INTO PERSON (id,hasname) VALUES  
    (?,?)");  
statement.setLong(1,10);  
statement.setString(2,"Honza");  
statement.executeUpdate();
```

## Retrieve

```
PreparedStatement statement =  
    connection.prepareStatement("SELECT  
    * FROM PERSON WHERE ID=?");  
statement.setLong(1,2);  
ResultSet rs = statement.executeQuery  
    ();
```

## Update

```
PreparedStatement statement =  
    connection.prepareStatement("UPDATE  
    PERSON SET HASNAME='Jirka' WHERE ID  
    =?");  
statement.setLong(1,2);  
statement.executeUpdate();
```

## Delete

```
PreparedStatement statement =  
    connection.prepareStatement("DELETE  
    FROM PERSON WHERE ID=?");  
statement.setLong(1,1);  
statement.executeUpdate();
```

## Question 1: Why prepared statements ?

```
PreparedStatement statement = connection.prepareStatement(  
    "INSERT INTO PERSON (id,hasname) VALUES (?,?)"  
);  
statement.setLong(1,10);  
statement.setString(2,"Honza");  
statement.executeUpdate();
```



# How to avoid boilerplate code ?

- Boilerplate code
  - Obtaining (pooled) connection
  - SQLException handling
  - creating Java objects out of the query results:

```
ResultSet rs = ...
while(rs.next()) {
    Person p = new Person();
    p.setId(rs.getLong("ID"));
    p.setHasName(rs.getString("HASNAME"));
}
```

- Although SQL is a standard – there are still differences in implementations (MySQL autoincrement, PostgreSQL serial ...)  
*solution = Object Relational Mapping (ORM)*

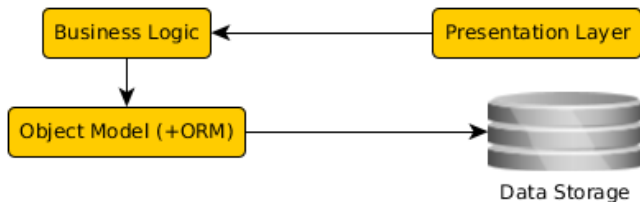


# JPA Basics



# ORM Architecture

- idea: “map whole Java classes to database records”
- a typical system architecture with ORM:



```

@Entity
public Person {
    @Id
    private Long id;
    private String hasName;
    // setters+getters
}
  
```

```

CREATE TABLE PERSON (
  ID bigint PRIMARY KEY NOT NULL,
  HASNAME varchar(255)
);
  
```



# CRUD using JPA 2.0

## Initialization

```
EntityManagerFactory f = Persistence.createEntityManagerFactory("pu");  
EntityManager em = f.createEntityManager();  
EntityTransaction t = em.getTransaction();  
t.begin();
```

## Create

```
Person person = new Person();  
person.setId(10);  
person.setHasName("Honza");  
em.persist(person);
```

## Retrieve

```
Person person = em.find(Person.class, 2);
```

## Update

```
Person person = em.find(Person.class, 2);  
person.setHasName("Jirka");
```

## Delete

```
Person person = em.find(Person.class, 1);  
em.remove(person);
```

## Finalization

```
t.commit();
```



# JPA 2.1

- Java Persistence API 2.1 (JSR-338)
- Although part of Java EE 7 specifications, JPA 2.1 can be used both in EE and SE applications.
- Main topics covered:
  - Basic scenarios
  - Controller logic – EntityManager interface
  - ORM strategies
  - JPQL + Criteria API





## JPA 2.1 – Entity Example

- Minimal example (configuration by exception):

```
@Entity
public class Person {

    @Id
    @GeneratedValue
    private Integer id;

    private String name;

    // setters + getters
}
```



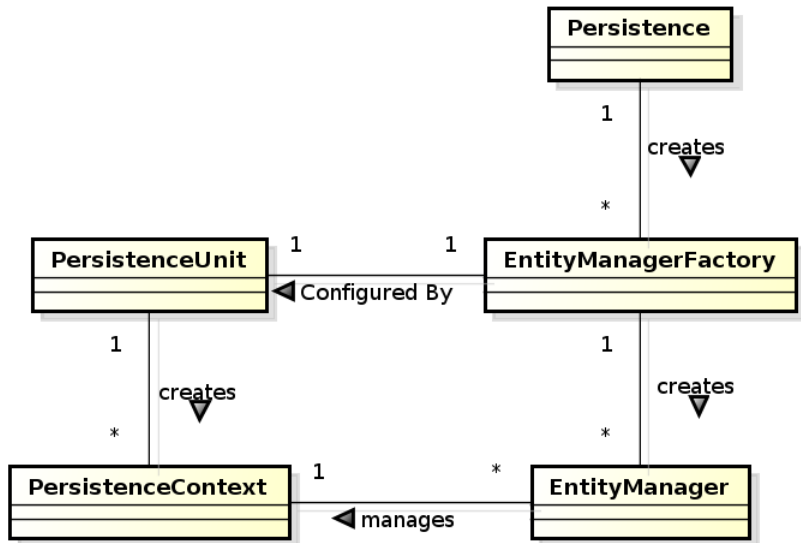
# JPA Basics

- Let's have a set of „suitably annotated“ POJOs, called entities, describing your domain model.
- A set of entities is logically grouped into a persistence unit.
- JPA providers :
  - generate persistence unit from existing database,
  - generate database schema from existing persistence unit.

**Question:** *What is the benefit of the keeping Your domain model in the persistence unit entities (OO) instead of the database schema (SQL) ?*



## JPA – Model

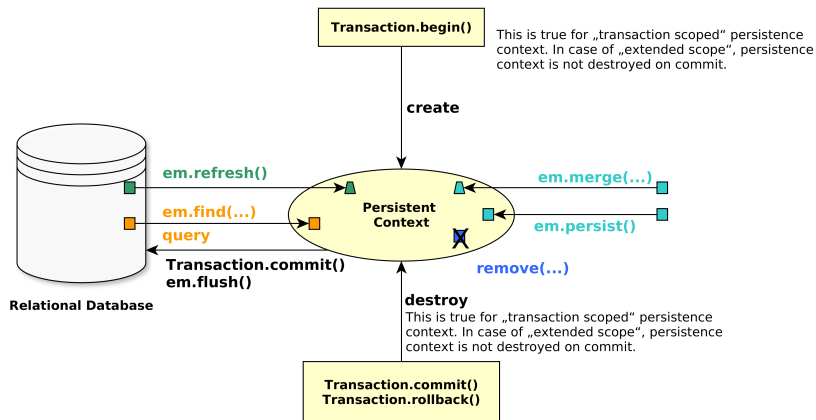


## JPA 2.0 – Persistence Context

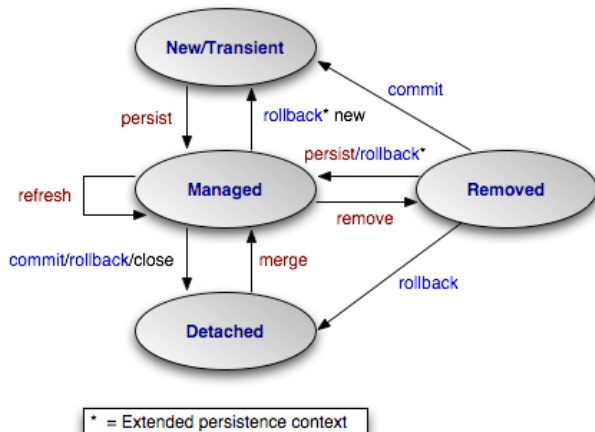
- In runtime, the application accesses the object counterpart (represented by entity instances ) of the database data. These (managed) entities comprise a **persistence context (PC)**.
  - PC is synchronized with the database on demand (refresh, flush) or at transaction commit.
  - PC is accessed by an EntityManager instance and can be shared by several EntityManager instances.



# JPA – Operations



# JPA – Entity States

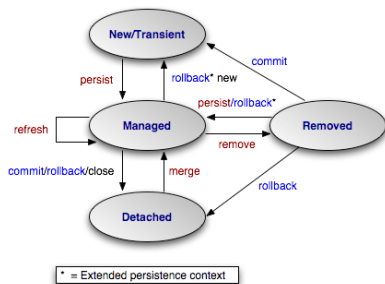


source: Wikipedia,  
[http://cs.wikipedia.org/wiki/Java\\_Persistence\\_API](http://cs.wikipedia.org/wiki/Java_Persistence_API)



# JPA – Operation Details

- persist** stores a new entity into persistence context (PC). The PC must not contain an entity with the same id,
- merge** merges a detached entity with its managed version (inside PC),
- find** finds an entity in the DB and fetches it into PC,
- refresh** “reverts” a managed entity state from DB,
- remove** deletes a managed entity from PC.



# JPA – EntityManager

- **EntityManager (EM)** instance is in fact a generic DAO, while entities can be understood as DPO (managed) or DTO (detached).
  - Selected operations on EM (CRUD) :
    - C**reate : `em.persist(Object o)`
    - R**ead : `em.find(Object id), em.refresh(Object o)`
    - U**ppdate : `em.merge(Object o)`
    - D**elete : `em.remove(Object o)`
- native/JPQL queries : `em.createNativeQuery, em.createQuery, etc.`
- Resource-local transactions :
- ```
em.getTransaction().[begin(),commit(),rollback()]
```

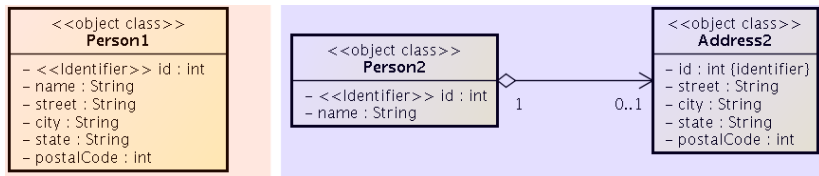




# Object-Relational Mapping (ORM) Basics



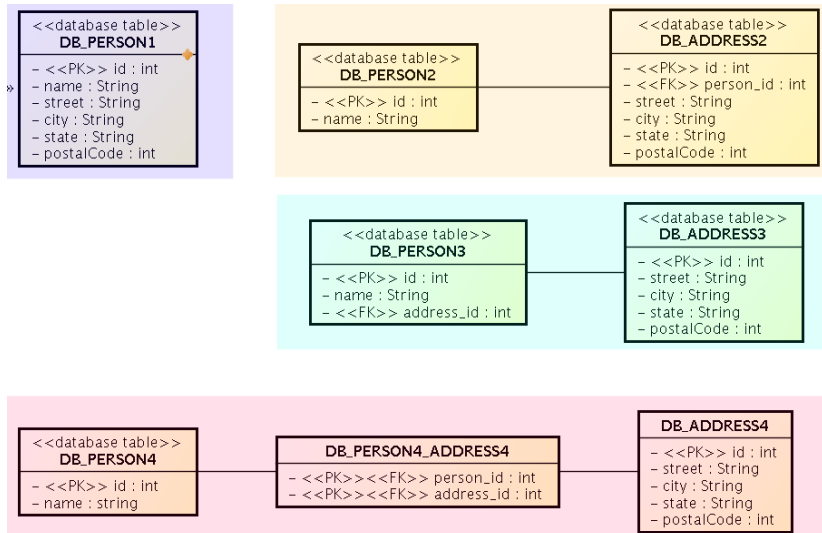
# Object model



Which one is correct ?



# Database model



Which one is correct ?



# ORM Basics

## Simple View

Java Classes = Entities = SQL tables

Java Fields/accessors = Entity properties = SQL columns

- The ORM is realized by means of Java annotations/XML.
- Physical Schema annotations
  - @Table, @Column, @JoinColumn, @JoinTable, etc.
- Logical Schema annotations
  - @Entity, @OneToMany, @ManyToMany, etc.
- Each property can be fetched lazily/eagerly.



# Mapping basic types

Primitive Java types:

- `String` → `varchar/text`,
- `Integer` → `int`,
- `byte[]` → `blob`,
- etc.

- `@Column` – physical schema properties of the particular column (insertable, updatable, precise data type, defaults, etc.)
- `@Lob` – large objects
- Default EAGER fetching (except `@Lobs`)

```
@Column(name="id")  
private String getName();
```



# Mapping enums/temporals

## Enums

```
@Enumerated(value=EnumType.String)  
private EnumPersonType type;
```

Stored either in a text column, or in an int column

## Temporals

```
@Temporal(TemporalType.Date)  
private java.util.Date datum;
```

Stored in respective column type according to the TemporalType.



## ORM – Identifiers

- Single-attribute: @Id
- Multiple-attribute – an identifier class must exist
  - Id. class: @IdClass, entity ids: @Id
  - Id. class: @Embeddable, entity id: @EmbeddedId

```
@Id
@GeneratedValue(strategy=GenerationType.SEQUENCE)
private int id;
```

**Question:** How to write hashCode, equals for entities ?



# ORM – Generating Identifiers

## Strategies

**SEQUENCE** – using the database native SEQUENCE functionality (Oracle, PostgreSQL)

**IDENTITY** – some DBMSs implement autonumber column (MS SQL, MySQL)

**TABLE** – special table keeps the last generated values

**AUTO** – the provider picks its own strategy

For database-related strategies, the value of id is set only on

- `Transaction.commit()`
- `em.flush()`
- `em.refresh()`





# ORM – Generated Identifiers TABLE strategy

```
@TableGenerator(  
    name="AddressGen",  
    table="ID_GEN",  
    pkColumnName="GEN_NAME",  
    valueColumnName="GEN_VAL",  
    initialValue=10000,  
    allocationSize=100)  
@Id  
@GeneratedValue(generator="AddressGen")  
private int id;
```



# ORM Relationship Mapping



# ORM – Relationships

## Employee – Project

### Unidirectional

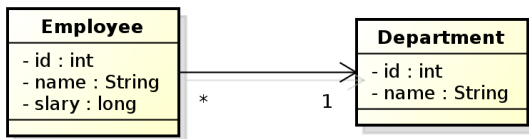
- accessed from **one side** only
  - `emp.getProjects()`
  - ~~`prj.getEmployees()`~~

### Bidirectional

- accessed from **both sides** sides
  - `empl.getProjects()`
  - `prj.getEmployees()`
- **owning side** = side used for changing the relationship
- **inverse side** = read-only side



# Unidirectional many-to-one relationship I



```

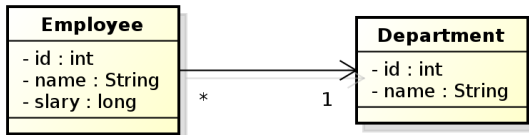
@Entity
public class Employee {
    // ...
    @ManyToOne
    private Department department;
    // ...
}
  
```

## owning side = Employee

In DB, the N:1 relationship is implemented using a foreign key inside the Employee table. In this case, the foreign key has a default name.



## Unidirectional many-to-one relationship II



```

@Entity
public class Employee {
    @Id
    private int id;
    private String name;
    private long salary;
    @ManyToOne
    @JoinColumn(name="DEPT_ID")
    private Department department;
}
  
```

**owning side = Employee.**

Here, the foreign key is defined using the `@JoinColumn` annotation.

BTW what do you think about “long salary”?



# Bidirectional many-to-one relationship



```

@Entity
public class Employee {
    @Id
    private int id;
    private String name;
    private long salary;
    @ManyToOne
    @JoinColumn(name="DEPT_ID")
    private Department department;
}
  
```

**owning side = Employee**

```

@Entity
public class Department {
    @Id
    private int id;
    private String name;

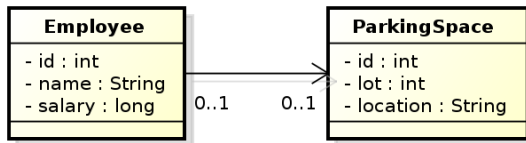
    @OneToMany(mappedBy="department")
    private Collection<Employee>
        employees;
}
  
```

**inverse side = Department**

Here, the foreign key is defined using the `@JoinColumn` annotation.



# Unidirectional one-to-one relationship



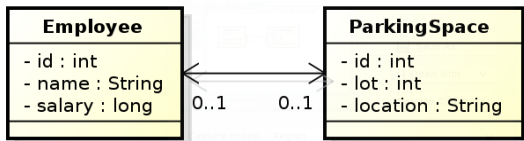
```

@Entity
public class Employee {
    @Id
    private int id;
    private String name;
    private long salary;
    @OneToOne
    @JoinColumn(name="PSPACE_ID")
    private ParkingSpace parkingSpace;
}
  
```

owning side = **Employee**.



# Bidirectional one-to-one relationship



```

@Entity
public class Employee {
    @Id
    private int id;
    private String name;
    private long salary;
    @OneToOne
    @JoinColumn(name="PSPACE_ID")
    private ParkingSpace parkingSpace;
}
  
```

```

@Entity
public class ParkingSpace {
    @Id
    private int id;
    private int lot;
    private String location;
    @OneToOne(mappedBy="parkingSpace")
    private Employee employee;
}
  
```

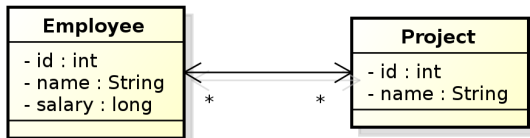
owning side = Employee

inverse side = ParkingSpace





# Bidirectional many-to-many relationship



```

@Entity
public class Employee {
    @Id
    private int id;
    private String name;
    private long salary;

    @ManyToMany
    private Collection<Project> project;
}
  
```

```

@Entity
public class Project {

    @Id private int id;
    private String name;

    @ManyToMany(mappedBy="projects");
    private Collection<Employee>
        employees;
}
  
```

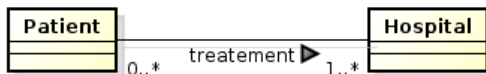
owning side = **Employee**

inverse side = **Project**



## Conceptual Modeling Intermezzo

- M:N relationship is a **conceptual modeling** primitive

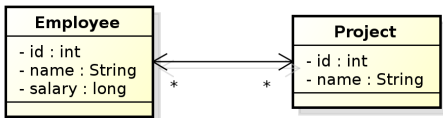


- Does it mean that
  - A patient has **one** treatment that is handled in **more** hospitals ?
  - A patient has **more** treatments, each handled in a **single** hospital ?
  - A patient has **more** treatments, each handled in **more** hospitals ?
- partialities and cardinalities are not enough in this case.

Careful modeling often leads to decomposing M:N relationships on the **conceptual level** (not on the logical level, like JPA).



# Bidirectional many-to-many relationship



```

@Entity
public class Employee {
    @Id private int id;
    private String Name;
    private long salary;
    @ManyToMany
    @JoinTable(name="EMP_PROJ",
        joinColumns=
            @JoinColumn(name="EMP_ID"),
        inverseJoinColumns=
            @JoinColumn(name="PROJ_ID"))
    private Collection<Project> projects;
}
  
```

```

@Entity
public class Project {
    @Id private int id;
    private String name;

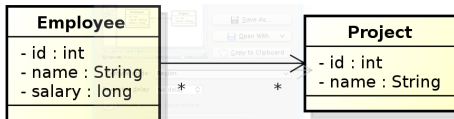
    @ManyToMany(mappedBy="projects");
    private Collection<Employee>
        employees;
}
  
```

**inverse side = Project**

**owning side = Employee**



# Unidirectional many-to-many relationship



```

@Entity
public class Employee {
    @Id private int id;
    private String Name;
    private long salary;
    @ManyToMany
    @JoinTable(name="EMP_PROJ",
        joinColumns=
            @JoinColumn(name="EMP_ID"),
        inverseJoinColumns=
            @JoinColumn(name="PROJ_ID"))
    private Collection<Project> projects;
}
  
```

```

@Entity
public class Project {
    @Id private int id;
    private String name;
}
  
```

**owning side = Employee**



# Unidirectional one-to-many relationship



```

@Entity
public class Employee {
    @Id private int id;
    private String name;
    @OneToMany
    @JoinTable(name="EMP_PHONE",
        joinColumns=
            @JoinColumn(name="EMP_ID"),
        inverseJoinColumns=
            @JoinColumn(name="PHONE_ID"))
    private Collection<Phone> phones;
}
  
```

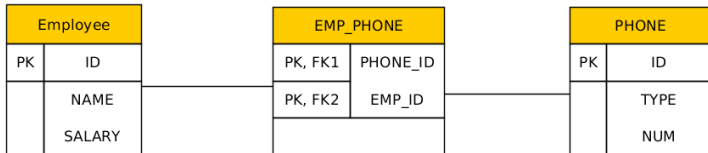
```

@Entity
public class Phone {
    @Id private int id;
    private String type;
    private String num;
}
  
```

**owning side = Employee**



# Unidirectional one-to-many relationship



```

@Entity public class Employee {
    @Id private int id;
    private String name;
    @OneToMany @JoinTable(name="EMP_PHONE",
        joinColumns=@JoinColumn(name="EMP_ID"),
        inverseJoinColumns=@JoinColumn(name="PHONE_ID"))
    private Collection<Phone> phones;
}
  
```

```

@Entity
public class Phone {
    @Id private int id;
    private String type;
    private String num;
}
  
```



# Lazy Loading

```
@Entity
public class Employee {
    @Id private int id;
    private String name;

    private ParkingSpace parkingSpace;
}
```

```
@Entity
public class Employee {
    @Id private int id;
    private String name;

    @OneToOne(fetch=FetchType.LAZY)
    private ParkingSpace parkingSpace;
}
```

parkingSpace instance fetched from the DB at the time of reading the parkingSpace field.



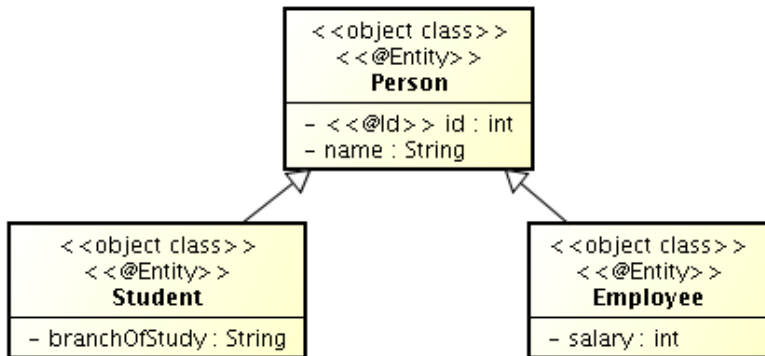
# ORM Inheritance Mapping





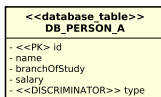
# Inheritance

How to map inheritance into DB ?



# Strategies for inheritance mapping

single table



joined

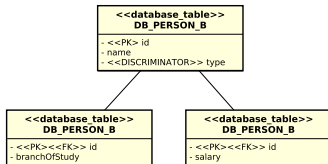
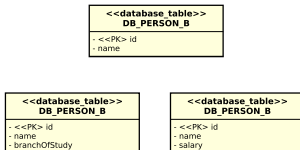


table per class



# Inheritance mapping (single-table)

```
@Entity
@Table(name="DB_PERSON_C")
@Inheritance /* same as @Inheritance(strategy=InheritanceType.SINGLE_TABLE)*/
@DiscriminationColumn(name="EMP_TYPE")
public abstract class Person {...}

@Entity
@DiscriminatorValue("Emp")
Public class Employee extends Person {...}

@Entity
@DiscriminatorValue("Stud")
Public class Student extends Person {...}
```



# Inheritance mapping (joined)

```
@Entity
@Table(name="DB_PERSON_C")
@Inheritance(strategy=InheritanceType.JOINED)
@DiscriminationColumn(name="EMP_TYPE",
                      discriminatorType=discriminatorType.INTEGER)
public abstract class Person {...}

@Entity
@Table(name="DB_EMPLOYEE_C")
@DiscriminatorValue("1")
public class Employee extends Person {...}

@Entity
@Table(name="DB_STUDENT_C")
@DiscriminatorValue("2")
public class Student extends Person {...}
```



# Inheritance mapping (table-per-class)

```
@Entity
@Inheritance(strategy=InheritanceType.TABLE_PER_CLASS)
public abstract class Person { ... }

@Entity
@Table(name="DB_EMPLOYEE_C")
@AttributeOverride(name="name", column=@Column(name="FULLNAME"))
public class Employee extends Person { ... }

@Entity
@Table(name="DB_STUDENT_C")
public class Student extends Person { ... }
```



# Summary



# Summary

## Don't forget!

- JPA 2 is an ORM API in Jakarta EE (Java EE)
- JPA 2 is a must-know for JakartaEE developers
- good conceptual model is a **key to model maintainability**, then comes JPA ...

## And the next week ?

- Spring

# THANK YOU

